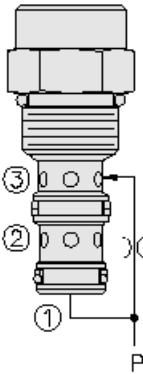




Overview



Description

EC50-30 is a screw-in, pressure compensating element intended for use with remote fixed or variable orifices to yield a two-port type, pressure compensated flow regulating valve for use in high pressure circuits.

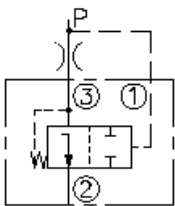
Operation

EC50-30 valve maintains a constant flow rate from port 2 regardless of load pressure changes in the circuit downstream of port 2. The valve maintains a constant differential pressure from circuit point P to port 3 (see symbol), thereby regulating hydraulic flow rate between the two points in the circuit.

Features

- Hardened parts for long life.
- Quiet, modulated response.
- Industry-common cavity.

Symbol



Ratings

Pressure Ratings

Pressure rating	345 bar (5000 psi)
Burst pressure	1380 bar (20000 psi)

Flow Ratings

Flow rating	26.5 lpm (7.0 gpm)	- Note: Maximum, with spring 5.5 bar (80 psi)
	37.9 lpm (10.0 gpm)	- Note: Maximum, with spring 11.0 bar (160 psi)

Temperature Ratings

Operating fluid temperature	-54 to 107 °C (-65 to 225 °F)
Storage temperature	-40 to 70 °C (-40 to 160 °F)
Ambient temperature	-40 to 90 °C (-40 to 194 °F)

Operating Parameters

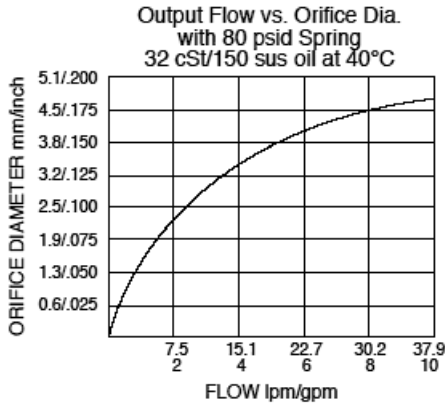
Fluids	Mineral based or synthetic hydraulic fluid with lubricating properties
Fluid viscosity range	7.4 to 420 cSt
Maximum operating contamination level	20/18/14 per ISO 4406

Properties

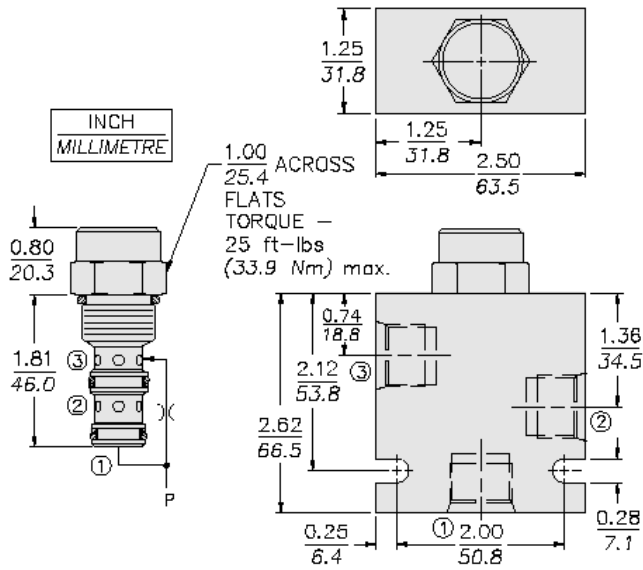
Unit weight	0.14 kg (0.30 lb)
Internal wetted surface area	130 cm ² (20.0 in ²)



Performance



Dimensions



Installation Specifications

Cavity	VC10-3
Cartridge installation torque	45 to 50 N-m (33 to 37 ft-lb)
Orientation restriction	None

Accessories

Seal kit	SK10-3P-TB	- Note: Polyurethane
	SK10-3U-OO	- Note: Urethane

