



Overview



Description

EC16-32 is a screw-in, cartridge style, load sense, pressure compensator with static load sense.

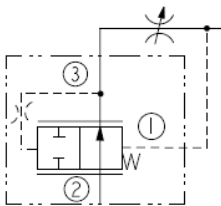
Operation

With inlet flow at port 2, port 3 will deliver required flow regardless of load pressure sensed at port 1. 0.53 mm (0.021 in) diameter orifice is recommended to be installed in load sense line at port 1 for better stability.

Features

- Hardened parts for long life.
- Quiet, modulated response.
- Industry-common cavity.

Symbol



Ratings

Pressure Ratings

Pressure rating	345 bar (5000 psi)
Proof pressure	690 bar (10000 psi)
Burst pressure	1275 bar (18500 psi)

Flow Ratings

Flow rating	113.6 lpm (30 gpm)	- Note: With 5.5 bar (80 psi) spring
	151.4 lpm (40 gpm)	- Note: With 11.0 bar (160 psi) spring
	189.3 lpm (50 gpm)	- Note: With 13.8 bar (200 psi) spring
Maximum internal leakage	98 ml/min (6.0 in ³ /min)	- Note: From port 2 to 1 at 345 bar (5000 psi)

Temperature Ratings

Operating fluid temperature	-40 to 100 °C (-40 to 212 °F)	- Note: With buna N seals
	-26 to 204 °C (-15 to 400 °F)	- Note: With viton seals
	-54 to 107 °C (-65 to 225 °F)	- Note: With polyurethane seals
Storage temperature	-40 to 70 °C (-40 to 160 °F)	
Ambient temperature	-40 to 70 °C (-40 to 160 °F)	

Operating Parameters

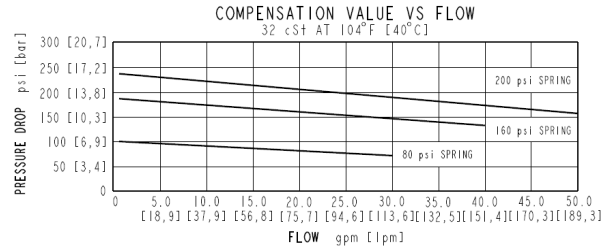
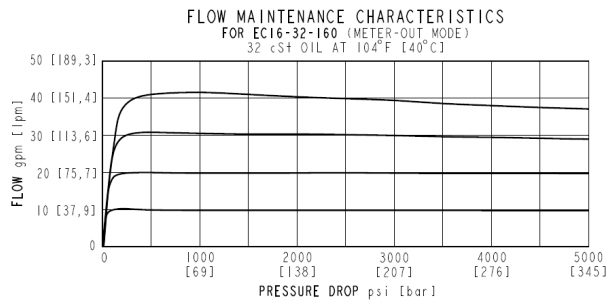
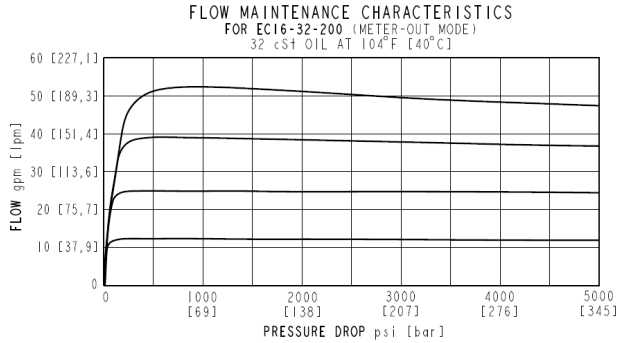
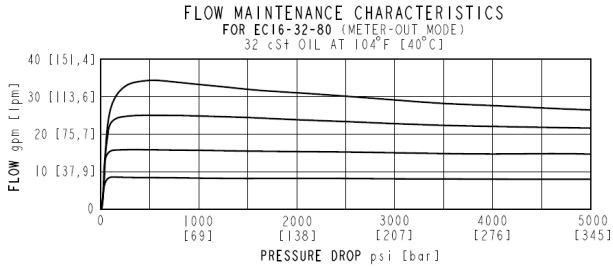
Fluids	Mineral based or synthetic hydraulic fluid with lubricating properties
Fluid viscosity range	7.4 to 420 cSt
Maximum operating contamination level	18/16/13 per ISO 4406



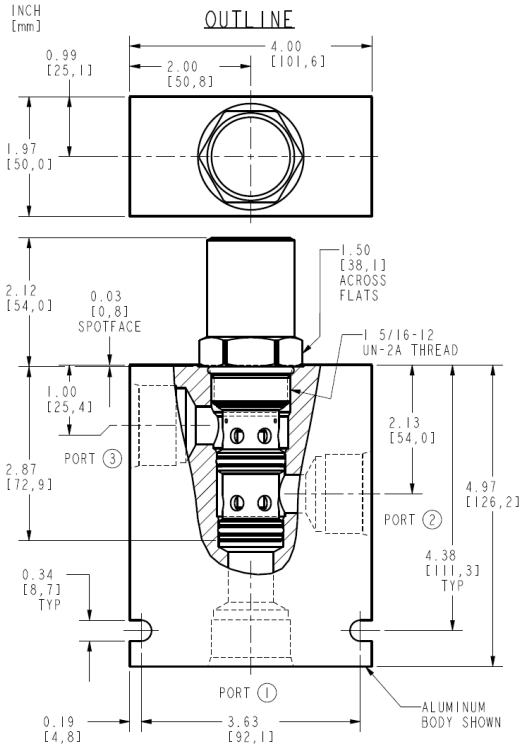
Properties

Unit weight 0.64 kg (1.4 lb)
Internal wetted surface area 368 cm² (57 in²)

Performance



Dimensions



ALL DIMENSIONS ARE FOR REFERENCE ONLY.



Installation Specifications

Cavity	VC16-3
Cartridge installation torque	133 to 138 N-m (98 to 102 ft-lb)
Orientation restriction	None

Accessories

Seal kit	SK16-3X-MM	- Note: X = seal option
----------	------------	--------------------------------



Order Code

ORDERING INFORMATION:

EC16-32-X-X-XXX

BASE MODEL

NUMBER

PORTING

CARTRIDGE ONLY - 0

SEALS

BUNA N - N

FLUOROCARBON - V

*POLYURETHANE - P

COMPENSATOR SPRING

80 psi [5,5 bar] - 80

160 psi [11,0 bar] - 160

200 psi [13,8 bar] - 200

*POLYURETHANE SEALS
RECOMMENDED FOR
OPERATING PRESSURES
ABOVE 3500 psi
[241 bar].

Model Options

EC16-32-H-J-R

H Line Body

CODE	DESCRIPTION
0	No Body
12T	Aluminum SAE 12
16T	Aluminum SAE 16
16TD	Ductile Iron SAE 16

J Seal

CODE	DESCRIPTION
N	Buna-N
V	Fluorocarbon
P	Polyurethane
U	PPDI Urethane

R Compensator Spring

CODE	DESCRIPTION
80	80 Compensator Spring
160	160 Compensator Spring
200	200 Compensator Spring