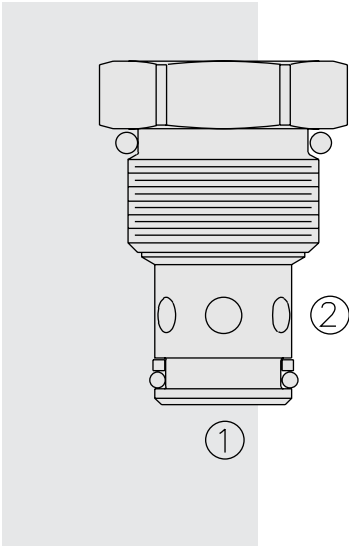


CV10-24 Check Valve



DESCRIPTION

A screw-in, cartridge-style, hydraulic check valve for use as a blocking or load-holding device.

OPERATION

The **CV10-24** allows flow passage from ② to ①, while blocking flow from ① to ②.

The cartridge has a fully guided check which is spring-biased closed until sufficient pressure is applied at ② to open to ①.

Note: High shock/rapid actuation applications may require a high load option. Consult factory.

FEATURES

- Low check mass for anti-cavitation applications.
- Hardened seat for long life and low leakage.
- Optional bias springs for back-pressure application flexibility.
- Industry common cavity.

RATINGS

Operating Pressure: 240 bar (3500 psi)

Flow: See Performance Chart

Internal Leakage: 0.25 cc/minute (5 drops/minute) max. at 207 bar (3000 psi)

Crack Pressure Defined: Gauge psi evident at ② at 16.4 cc/minute (1 cu. in./minute) attained at ①

Standard Bias Springs at Crack: 0.35 bar (5 psi); 1.7 bar (25 psi); 3.8 bar(55 psi)

Temperature: -40 to 120°C

Filtration: See page 9.010.1

Fluids: Mineral-based or synthetics with lubricating properties at viscosities of 7.4 to 420 cSt (50 to 2000 sus); See Temperature and Oil Viscosity, page 9.060.1

Installation: No restrictions; See page 9.020.1

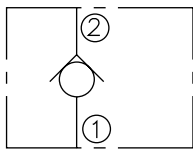
Cavity: VC10-2; See page 9.110.1

Cavity Tool: CT10-2XX; See page 8.600.1

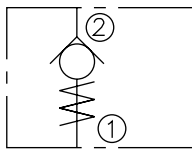
Seal Kit: SK10-2X-B; See page 8.650.1

SYMBOLS

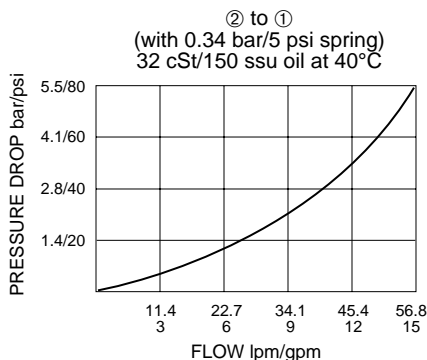
USASI:



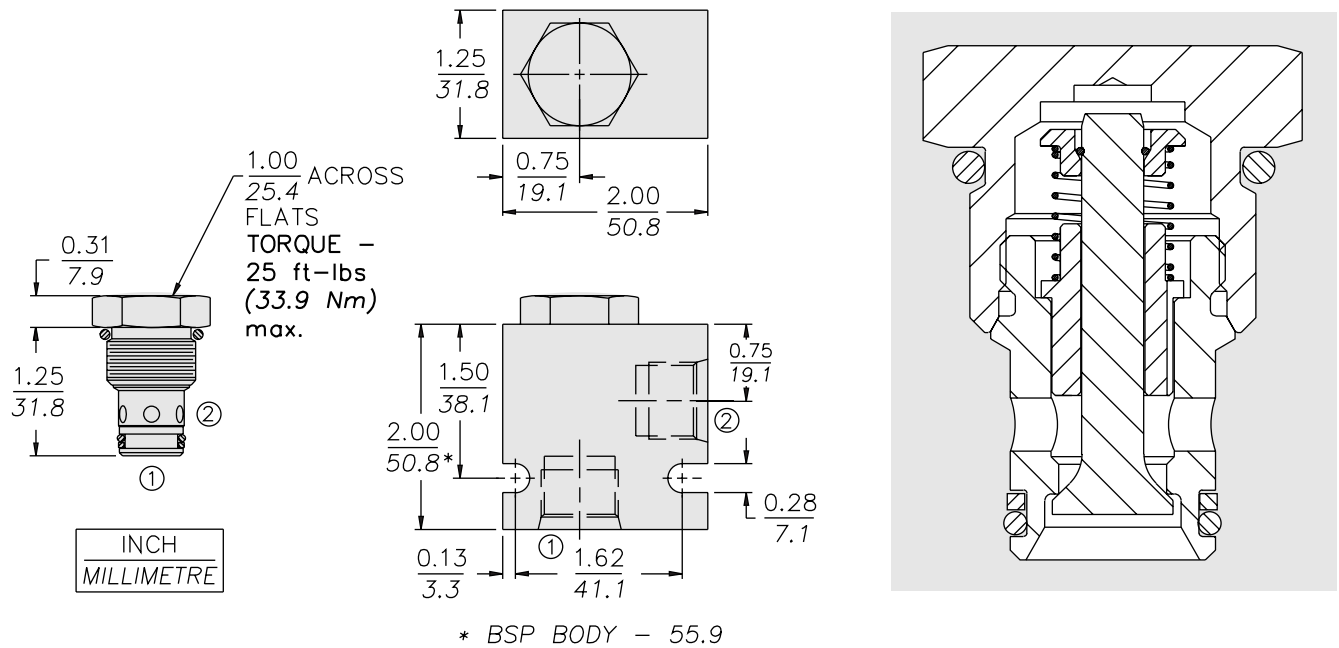
ISO:



PERFORMANCE (Cartridge Only)



DIMENSIONS



MATERIALS

Cartridge: Weight: 0.08 kg. (0.17 lbs.)
Steel with hardened work surfaces.
Zinc-plated exposed surfaces.
Buna N O-rings and polyester
elas-tomer back-ups standard.

Standard Ported Body: Weight:
0.16 kg. (0.35 lbs.); Anodized high-
strength 6061 T6 aluminum alloy,
rated to 240 bar (3500 psi). Ductile
iron bodies available; dimensions
may differ. See page 8.010.1

TO ORDER

CV10-24 - - -

Porting		
Cartridge Only	0	
SAE 6	6T	
SAE 8	8T	
1/4 in. BSP*	2B	
3/8 in. BSP*	3B	
1/2 in. BSP*	4B	
		Bias Spring
		05 0.34 bar (5 psi)
		Seals
		N Buna N (Std.)
		V Fluorocarbon

*BSP Body;
U.K. Mfr. Only