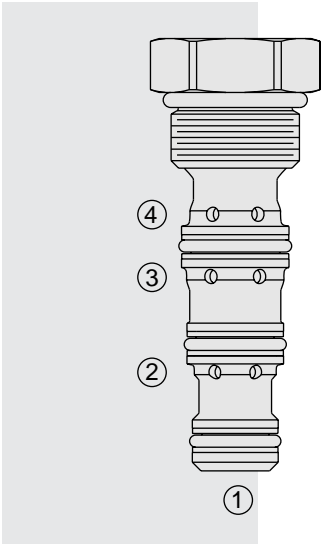


DC08-40 Pilot Operated Check Valve



DESCRIPTION

A dual pilot operated check valve for use in blocking or load-holding circuits.

OPERATION

The **DC08-40** will block flow from ① to ②, and from ④ to ③. Flow is allowed in the opposite direction when pressure is applied to port ② and/or port ③.

The valve has a 3:1 pilot ratio, so at least 1/3 of the load pressure at port ① or ④ is required at the pilot lines (ports ② or ③) to open the flow passage to allow flow from ports ① or ④.

The check is spring-biased at 25 psi to assure holding in a static or no load condition. An optional spring biased at 135 psi is available.

FEATURES

- Hardened seat for long life and low leakage.
- Low pressure drop.

RATINGS

Operating Pressure: Inlet: 240 bar (3500 psi)

Flow: Rated Inlet Flow: 19 lpm (5 gpm); see performance chart

Pilot Ratio: 3:1

Check Spring Bias: 1.7 bar (25 psi); Optional 9.3 bar (135 psi)

Leakage: 5 drops per minute (0.25 ml per minute) at 3000 psi

Temperature: -40 to 120°C with Buna N seals

Filtration: See page 9.010.1

Fluids: Mineral-based or synthetics with lubricating properties at viscosities of 7.4 to 420 cSt (50 to 2000 sus); See Temperature and Oil Viscosity, page 9.060.1

Installation: No restrictions; See page 9.020.1

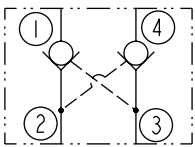
Cavity: VC08-4; See page 9.108.1

Cavity Tool: CT08-4XX-X-X; See page 8.600.1

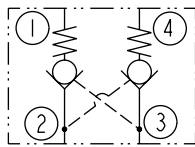
Seal Kit: SK08-4X-MMM; See page 8.650.1

SYMBOLS

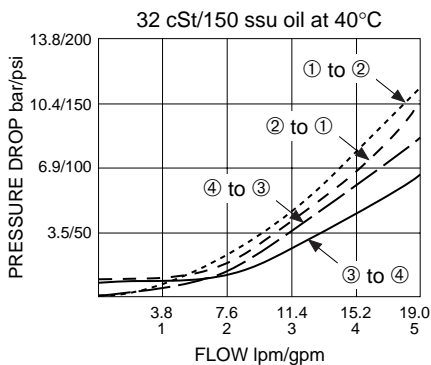
USASI:



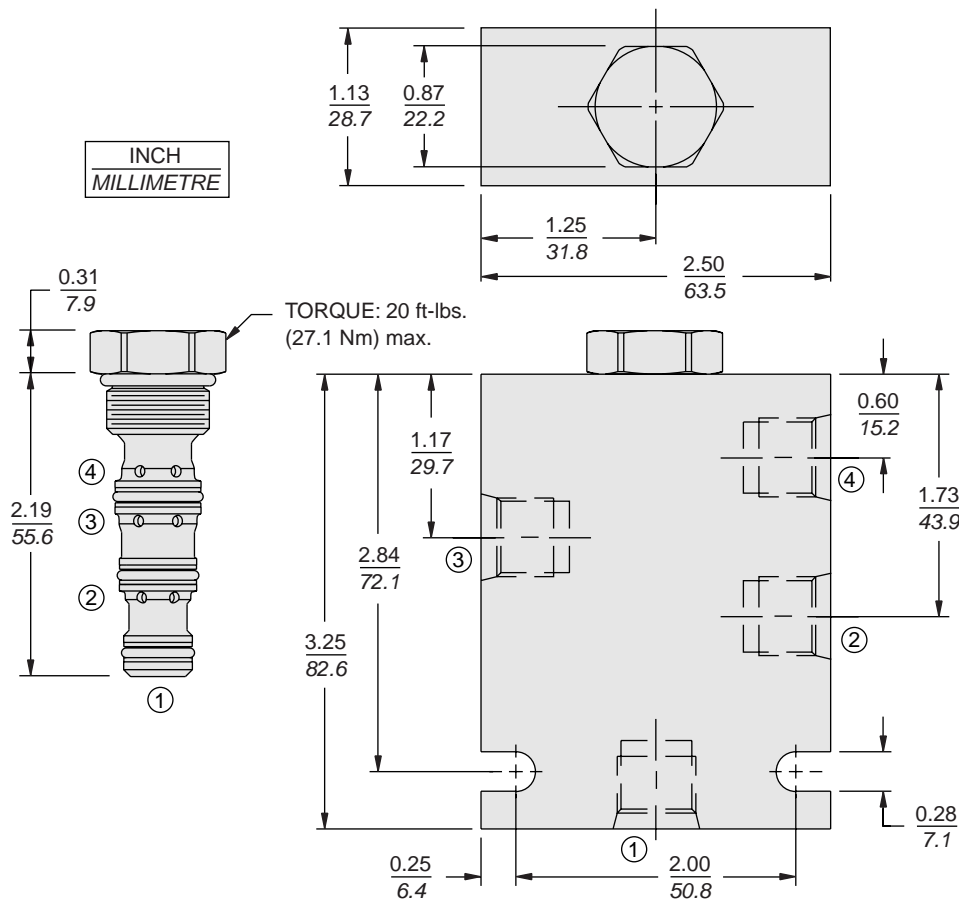
ISO:



PERFORMANCE (Cartridge Only)



DIMENSIONS



MATERIALS

Cartridge: Weight: 0.13 kg. (0.28 lbs.)
Steel with hardened work surfaces.
Zinc-plated exposed surfaces.
Buna N O-rings and polyester elastomer back-ups standard.

Standard Ported Body: Weight: 0.18 kg. (0.40 lbs.) Anodized high-strength 6061 T6 aluminum alloy, rated to 207 bar (3000 psi). Ductile iron bodies available; dimensions may differ. See page 8.008.1

TO ORDER

DC08-40 -		-	-	-	-
Porting				Bias Spring	
Cartridge Only	0			25	1.7 bar (25 psi) Standard
SAE 6	6T			135	9.3 bar (135 psi) Optional
1/4 in. BSP*	2B				
3/8 in. BSP*	3B				
*BSP Body; U.K. Mfr. Only				Seals	
				N	Buna N (Std.)
				V	Fluorocarbon