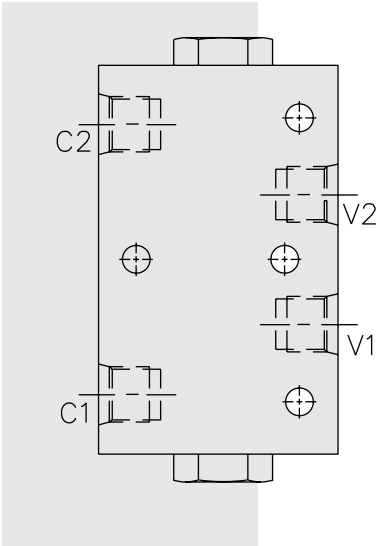


DCV08 Lock Valve



DESCRIPTION

An in-line-housed, double-pilot-operated, hydraulic check valve for use in blocking or load holding circuits.

OPERATION

The **DCV08** allows flow from V ports to C ports, while normally blocking flow in the opposite direction. Flow will be allowed from C to V when pressure is applied to the opposite side V port.

The valve has a 4:1 pilot ratio, so approximately one-fourth of the load pressure held at either C port is required at the opposite V port to open the flow passage.

The check is spring-biased at 1.7 bar (25 psi) to assure holding in static or no-load conditions. An optional sealed piston with check spring bias of 6.9 bar (100 psi) is available.

FEATURES

- Hardened seat for long life and low leakage.
- Check section serviceable as a cartridge.
- Optional sealed piston.
- Optional spring ranges.
- Low pressure drop.

RATINGS

Flow: See Performance Chart

Internal Leakage Cx to Vx: 0.25 cc/minute (5 drops/minute) max.
at 207 bar (3000 psi)

V1 to V2 (without sealed piston): 328 cc/minute (20 cu. in./minute) max.
at 240 bar (3500 psi)

Pilot Ratio: 4:1

Temperature: -40 to 120°C with standard Buna seals

Filtration: See page 9.010.1

Fluids: Mineral-based or synthetics with lubricating properties at viscosities of 7.4 to 420 cSt (50 to 2000 sus); See Temperature and Oil Viscosity, page 9.060.1

Installation: No restrictions; See page 9.020.1

Seal Kit: See CV08-2X, page 4.010.1

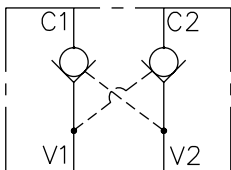
Pilot Piston Service Part Numbers:

O-Ring (1) – Buna 6001012, Fluorocarbon 6003012

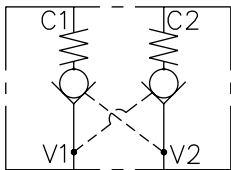
Back-up (2) – Buna 6011012, Fluorocarbon 6011012

SYMBOLS

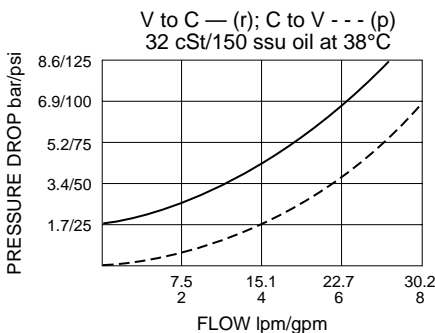
USASI:



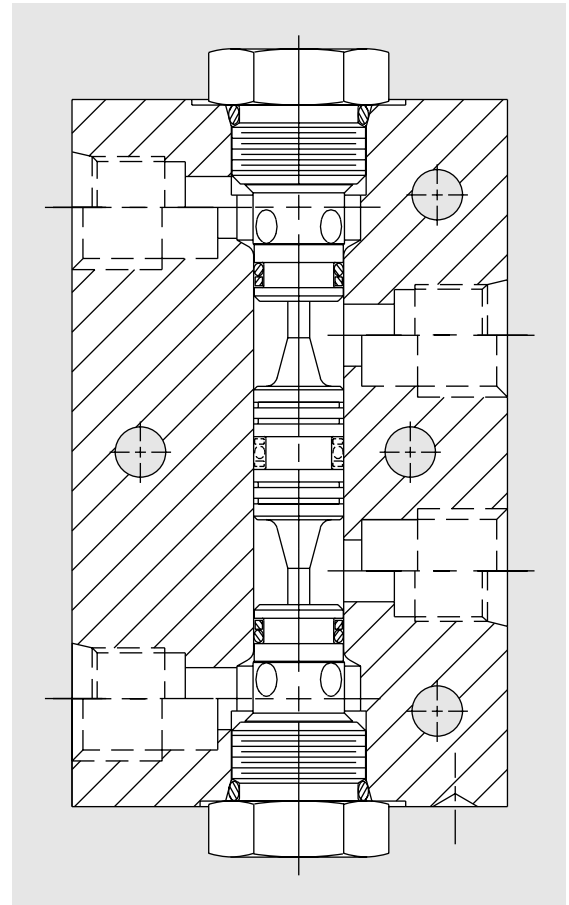
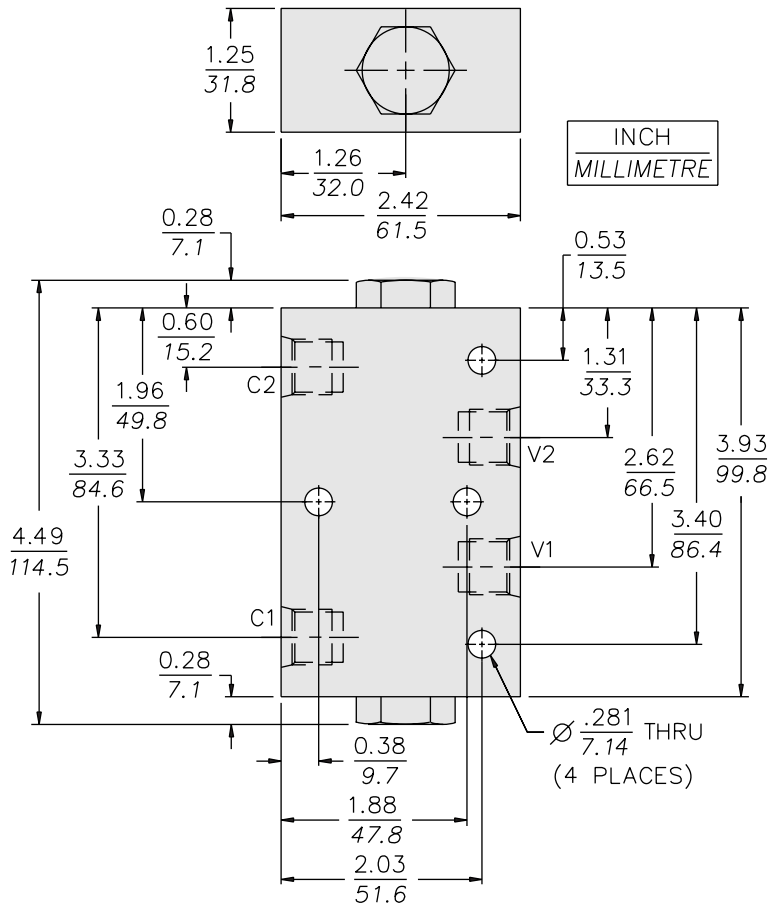
ISO:



PERFORMANCE (Cartridge Only)



DIMENSIONS



MATERIALS

Cartridge: (CV08-20): Steel with hardened work surfaces.
Zinc-plated exposed surfaces.
Buna N O-rings and back-up standard.

Pilot Piston: Hardened steel.

Standard Ported Body: Anodized high-strength 6061 T6 aluminum alloy, rated to 207 bar (3000 psi).
Ductile iron bodies available; dimensions may differ.
See page 8.008.1

Product Weight: 0.58 kg. (1.28 lbs.)

TO ORDER

DCV08-

- Porting**
- SAE 6 **6T**
 - SAE 8 **8T**
 - 1/4 in. BSP* **2B**
 - 3/8 in. BSP* **3B**
- *BSP Body; U.K. Mfr. Only
- Seals**
- Buna N (Std.) **N**
 - Fluorocarbon **V**
 - Buna N w/Sealed Piston (100 psi spring minimum required) **NS**
 - Fluorocarbon w/Sealed Piston (100 psi spring minimum required) **VS**

Bias Spring

- (Blank) 1.7 bar (25 psi) (Std.)*
- 60** 4.1 bar (60 psi)
- 100** 6.9 bar (100 psi)
- 150** 10.3 bar (150 psi)
- 200** 13.8 bar (200 psi)
- 270** 18.3 bar (270 psi)

Note: Both check valves must have same spring value.

* DCV08 valves built with standard 25 psi spring are not stamped with spring rating. Other spring ratings are stamped on valve.