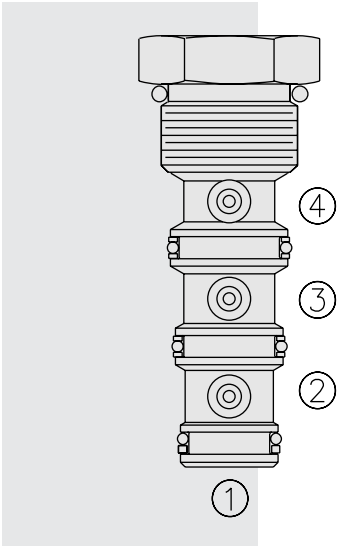


# LS10-40 Load Shuttle Network



**DESCRIPTION**

A cartridge-style check valve network for use in hydraulic load-sense circuits.

**OPERATION**

The **LS10-40** will compare pressures from three circuits to provide a pressure signal from the highest pressure circuit, while blocking the other circuits.

The valve will allow flow from the highest pressure port (④, ③ or ②) to port ①.

**FEATURES**

- Industry common cavity.
- Hardened seat for long life and low leakage.

**RATINGS**

**Operating Pressure:** 240 bar (3500 psi)

**Flow:** 1.89 lpm (0.5 gpm); See performance chart

**Internal Leakage:** 0.15 ml/minute (2 drops/minute) at 240 bar (3500 psi)

**Temperature:** -40 to 120°C with standard Buna seals

**Filtration:** See page 9.010.1

**Fluids:** Mineral-based or synthetics with lubricating properties at viscosities of 7.4 to 420 cSt (50 to 2000 sus); See Temperature and Oil Viscosity, page 9.060.1

**Installation:** No restrictions; See page 9.020.1

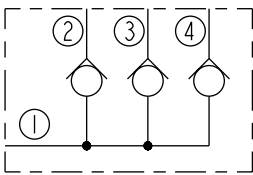
**Cavity:** VC10-4; See page 9.110.1

**Cavity Tool:** CT10-4XX-X-X; See page 8.600.1

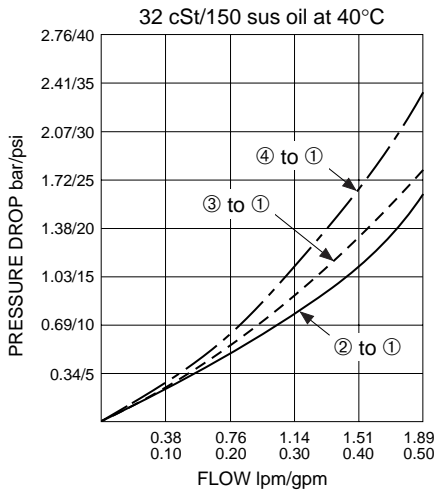
**Seal Kit:** SK10-4X-MMM; See page 8.650.1

**SYMBOLS**

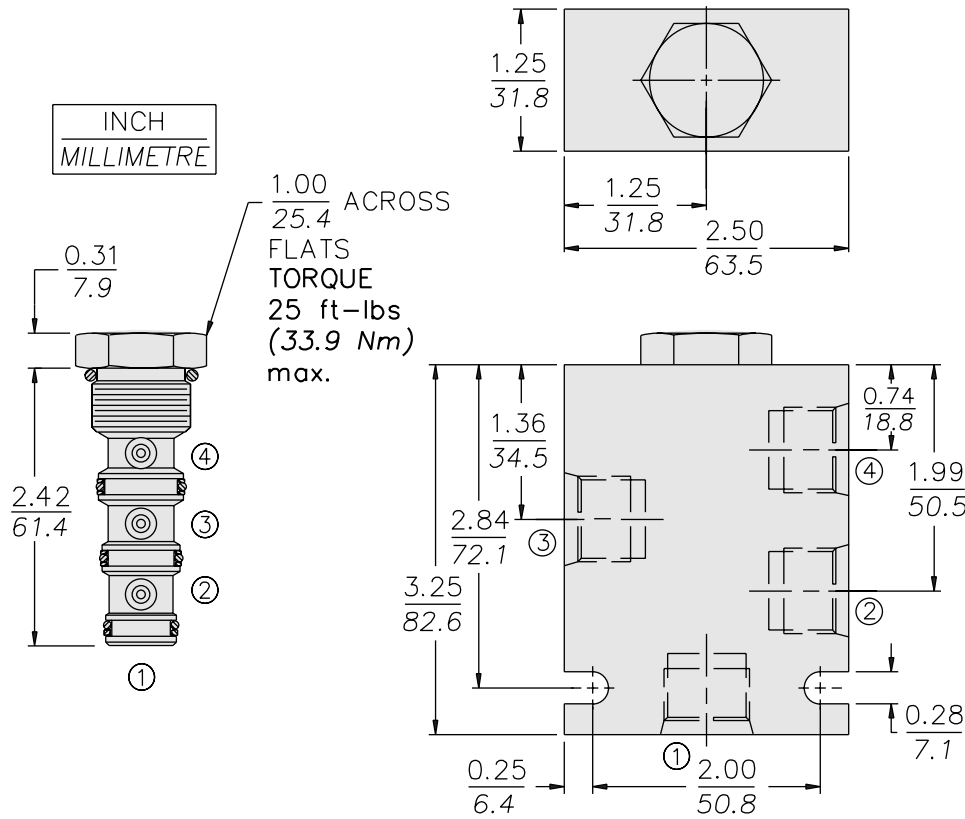
**USASI/ISO:**



**PERFORMANCE (Cartridge Only)**



**DIMENSIONS**



**MATERIALS**

**Cartridge:** Weight: 0.12 kg. (0.26 lbs.)  
Steel with hardened work surfaces.  
Zinc-plated exposed surfaces.  
Buna N O-rings and polyester  
elastomer back-ups standard.

**Standard Ported Body:** Weight:  
0.34 kg. (0.75 lbs.) Anodized high-  
strength 6061 T6 aluminum alloy,  
rated to 207 bar (3000 psi). Ductile  
iron bodies available; dimensions  
may differ. See page 8.010.1

**TO ORDER**

