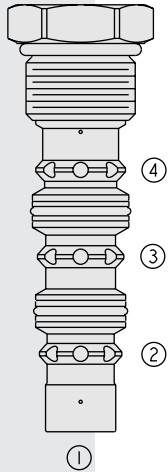


HS52-42 Low Side (Hot Oil) Shuttle, Springless



DESCRIPTION

A spool-type, closed in transition, 2-position, 3-way hot oil shuttle valve, which may be used on hydrostatic transmissions to direct charge pump oil to a heat exchanger or to tank.

OPERATION

With internal piloting at port ①, ② or ④, oil will flow from the port opposite of the port piloted to port ③, thus removing oil from the low-pressure side for cooling or filtration purposes. The valve is **springless**, relying solely on the internal pilot pressure signal to shift to either side. The **HS52-42** is closed in transition.

FEATURES

- Hardened parts for long life.
- Industry common cavity.

RATINGS

Operating Pressure: 345 bar (5000 psi) when used in steel body

Flow Rate: See Performance Chart

Internal Leakage: 164 cc/minute (10 cu. in./minute) max.

Temperature: -40 to 120°C

Filtration: See page 9.010.1

Fluids: Mineral-based or synthetics with lubricating properties at viscosities of 7.4 to 420 cSt (50 to 2000 sus); See Temperature and Oil Viscosity, page 9.060.1

Installation: No restrictions; See page 9.020.1

Cavity: VC12-4; See page 9.112.1

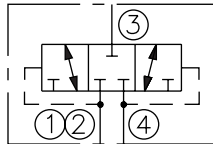
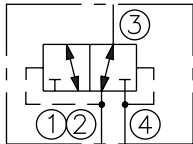
Cavity Tool: CT12-4XX; See page 8.600.1

Seal Kit: SK12-2x-TB

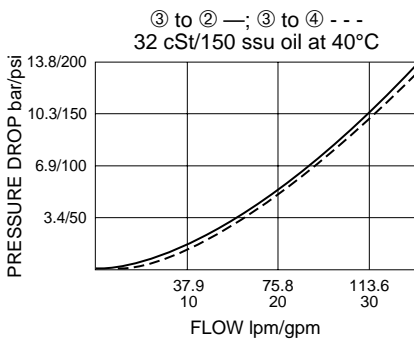
SYMBOLS

USASI/ISO:

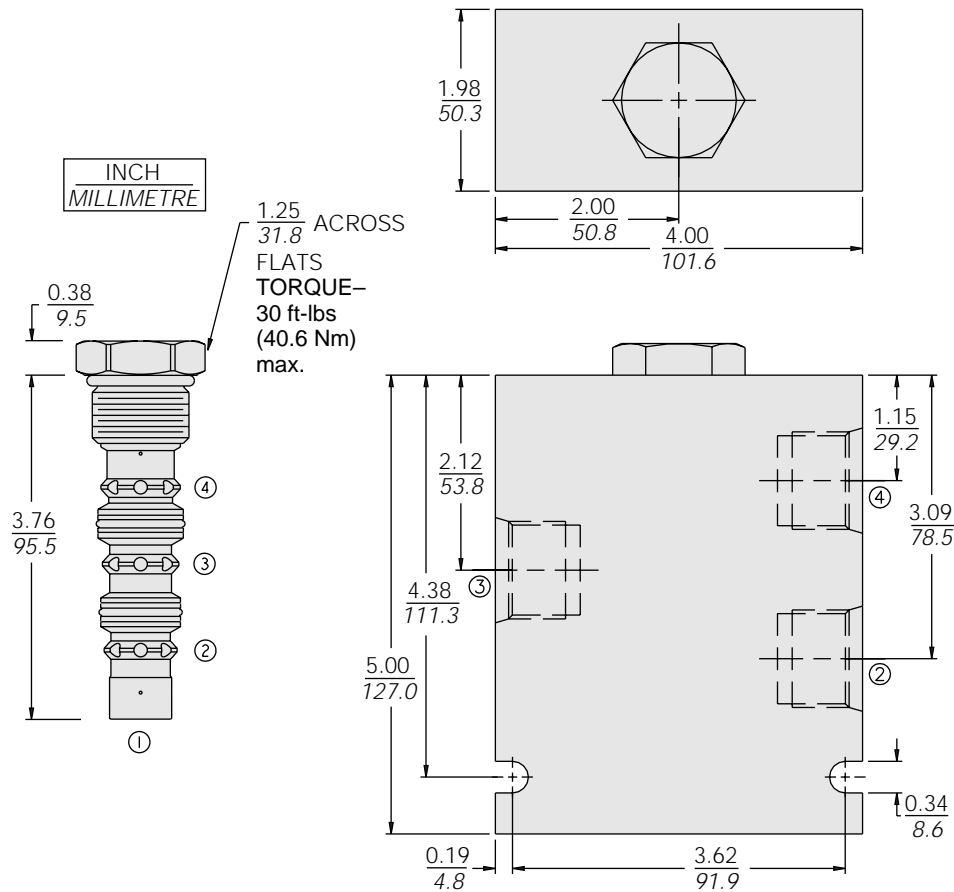
TRANSITION:



PERFORMANCE (Cartridge Only)



DIMENSIONS

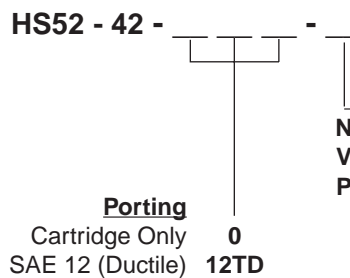


MATERIALS

Cartridge: Weight: 0.15 kg. (0.32 lbs.)
 Steel with hardened work surfaces.
 Zinc-plated exposed surfaces.
 Polyurethane seals and polyester elastomer back-ups required for operation over 207 bar (3000 psi).

Ported Body: Weight: 3.57 kg. (7.87 lbs.); Ductile Iron (code "D") standard, rated to 345 bar (5000 psi). Some body dimensions may differ. See page 8.012.1.

TO ORDER



- Seals**
- N Buna N (Std.)
 - V Fluorocarbon
 - P Polyurethane — required for operation over 207 bar (3000 psi)