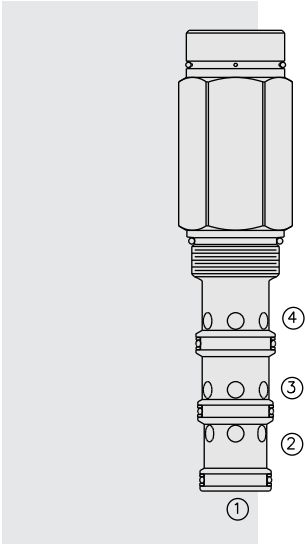


# PD42-M42 Piloted 3-Way Spool, Internal Vent



## DESCRIPTION

A screw-in, cartridge-style, pilot-operated, spool-type, hydraulic directional valve for three-way circuits requiring remote pilot actuation.

## OPERATION

In neutral (unpiloted), the PD42-M42 allows flow passage between ③ and ② while ④ is blocked.

On remote pilot signal at ①, the valve shifts to open from ③ to ④, while blocking flow to ②.

Note that ④ is common to the spring chamber. Pressure on ④ will directly (1:1) affect required pilot pressure and must always be added to the bias spring value.

**Note:** Consult factory for applications where bi-directional flow is required when the valve is in the piloted position.

## FEATURES

- Hardened spool and cage for long life.
- Optional sealed pilot.
- Industry-standard ISO cavity.

## RATINGS

**Maximum Operating Pressure:** With Polyurethane Seals: Ports ①, ②, & ③: 345 bar (5000 psi); Port ④: 210 bar (3000 psi)

**Flow:** See Performance Chart

**Internal Leakage at Maximum Operating Pressure:** All Ports : 246 cc/minute (15 cu. in./minute); The sealed pilot version exhibits no leakage at maximum operating pressure.

### Pilot Pressure Required:

- To Begin Spool Movement: 11.9 bar (172 psi)
- To Bring Spool to Cross-Over Point: 14.5 bar (210 psi)
- To Fully Shift the Spool: 17 bar (245 psi)

**Oil Volume Required to Full Shift:** 2.5 cc (0.15 cu. in.)

**Temperature:** -40 to 120°C with standard Buna seals

**Filtration:** See page 9.010.1

**Fluids:** Mineral-based or synthetics with lubricating properties at viscosities of 7.4 to 420 cSt (50 to 2000 sus); See Temperature and Oil Viscosity, page 9.060.1

**Installation:** No restrictions; See page 9.020.1

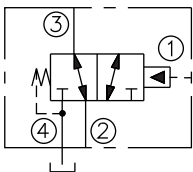
**Cavity:** VC42-M4; See page 9.142.1

**Cavity Tool:** CT42-M4XX; See page 8.600.1

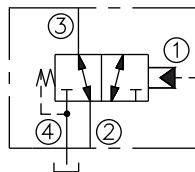
**Seal Kit:** SK42-4X-MMM; See page 8.650.1

## SYMBOLS

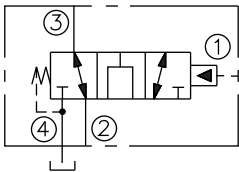
### USASI:



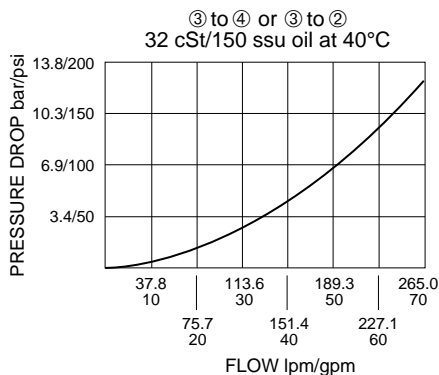
### ISO:



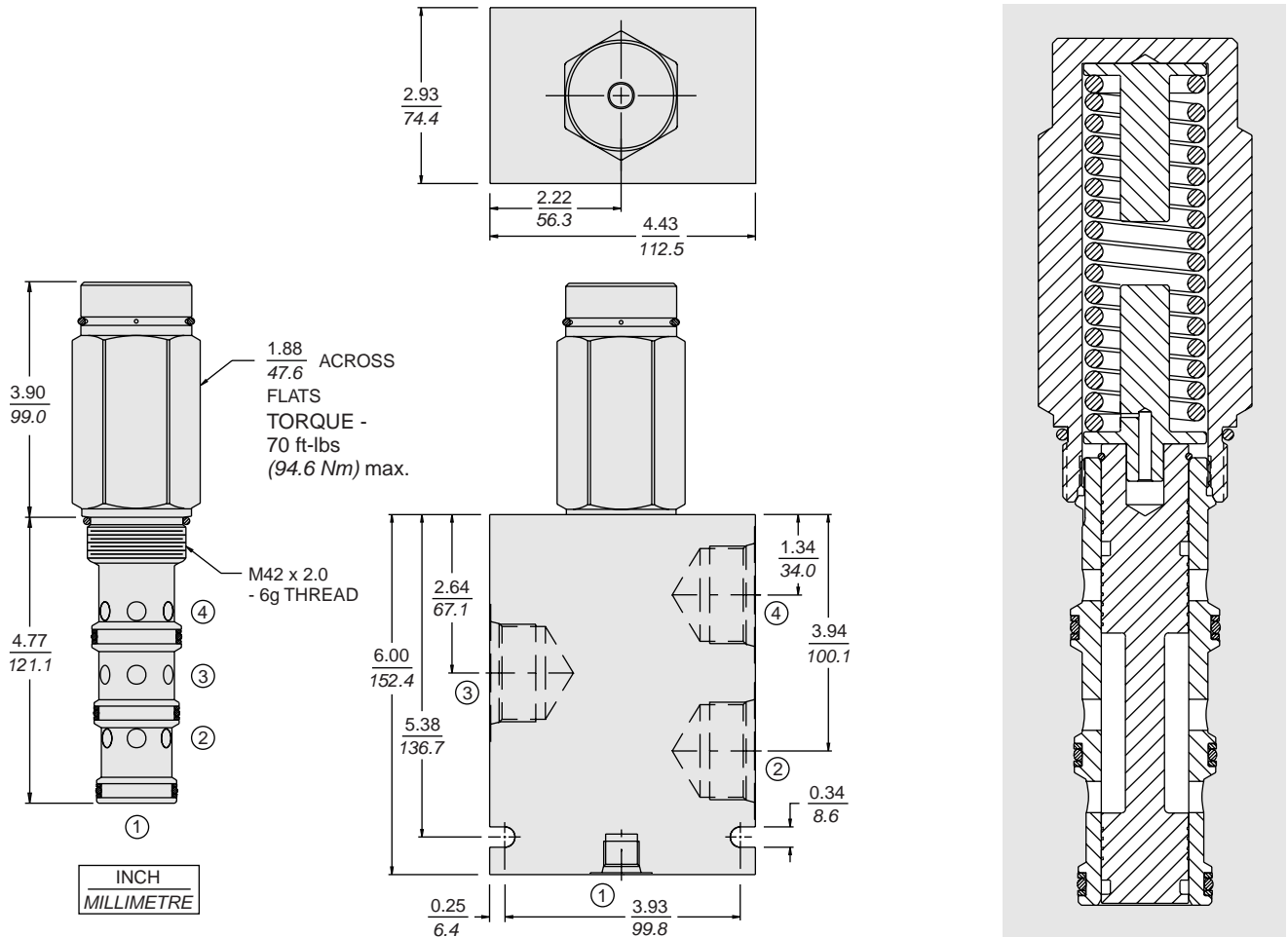
### OPEN TRANSITION:



## PERFORMANCE (Cartridge Only)



**DIMENSIONS**

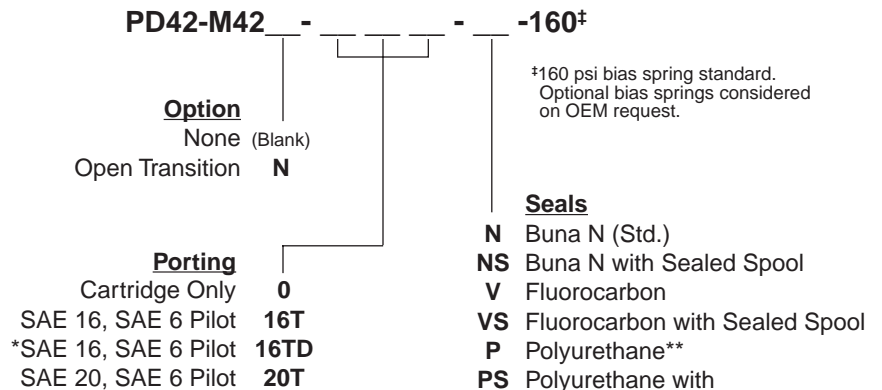


**MATERIALS**

**Cartridge:** Weight: 0.52 kg. (1.15 lbs.)  
Steel with hardened work surfaces.  
Zinc-plated exposed surfaces.  
Buna N O-rings and polyester elastomer back-ups standard.

**Standard Ported Body:** Weight:  
2.8 kg. (6.2 lbs.) Anodized high-strength 6061 T6 aluminum alloy, rated to 207 bar (3000 psi). Ductile iron bodies available; dimensions may differ. See page 8.042.1

**TO ORDER**



\*Ductile iron body for pressures over 207 bar/3000 psi

Note: All bodies are PD type.