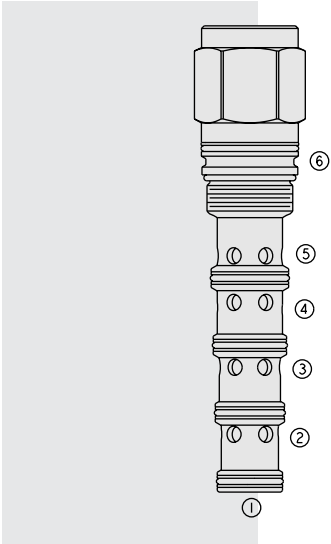


# PD42-S60N Piloted, 2-Position, 4-Way Spool



## DESCRIPTION

A screw-in, cartridge-style, pilot-operated, 2-position, 4-way, spool-type, hydraulic directional valve.

## OPERATION

In the neutral position, the **PD42-S60N** allows flow between ports ② and ③ and from ④ to ⑤. On remote pilot signal at ①, the valve shifts to allow flow between ports ③ and ④, and from ② to ⑤.

The spring chamber is vented to the tank through port ⑥. The vented spring chamber allows the valve to be fully pressurized at ports ②, ③, ④ and ⑤ without affecting required pilot pressure. Pressure at ⑥ will affect required pilot pressure.

## FEATURES

- Hardened spool and cage for long life.

## RATINGS

**Maximum Operating Pressure:** ports ②, ③ and ④: 324 bar (4700 psi);  
Port ①: 28 bar (400 psi)

**Flow:** 0 to 189 lpm (0 to 50 gpm); See Performance Chart

**Internal Leakage:** Maximum leakage at 207 bar (3000 psi):  
1.31 liters/minute (80 cu. in./minute).

**Temperature:** -40 to 120°C (-40 to 248°F)

**Filtration:** See page 9.010.1

**Fluids:** Mineral-based or synthetics with lubricating properties at viscosities of  
7.4 to 420 cSt (50 to 2000 sus); See Temperature and Oil Viscosity, page 9.060.1

**Installation:** No restrictions; See page 9.020.1

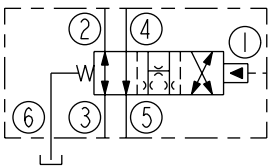
**Cavity:** VC42-S6; See page 9.142.1

**Cavity Tool:** CT42-S6XX; See page 8.600.1

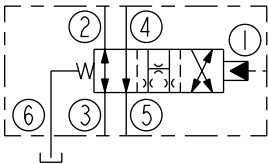
**Seal Kit:** SK42-S6X-BMMMM; See page 8.650.1

## SYMBOLS

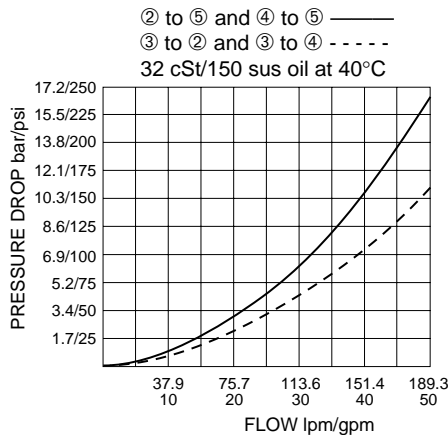
### USASI:



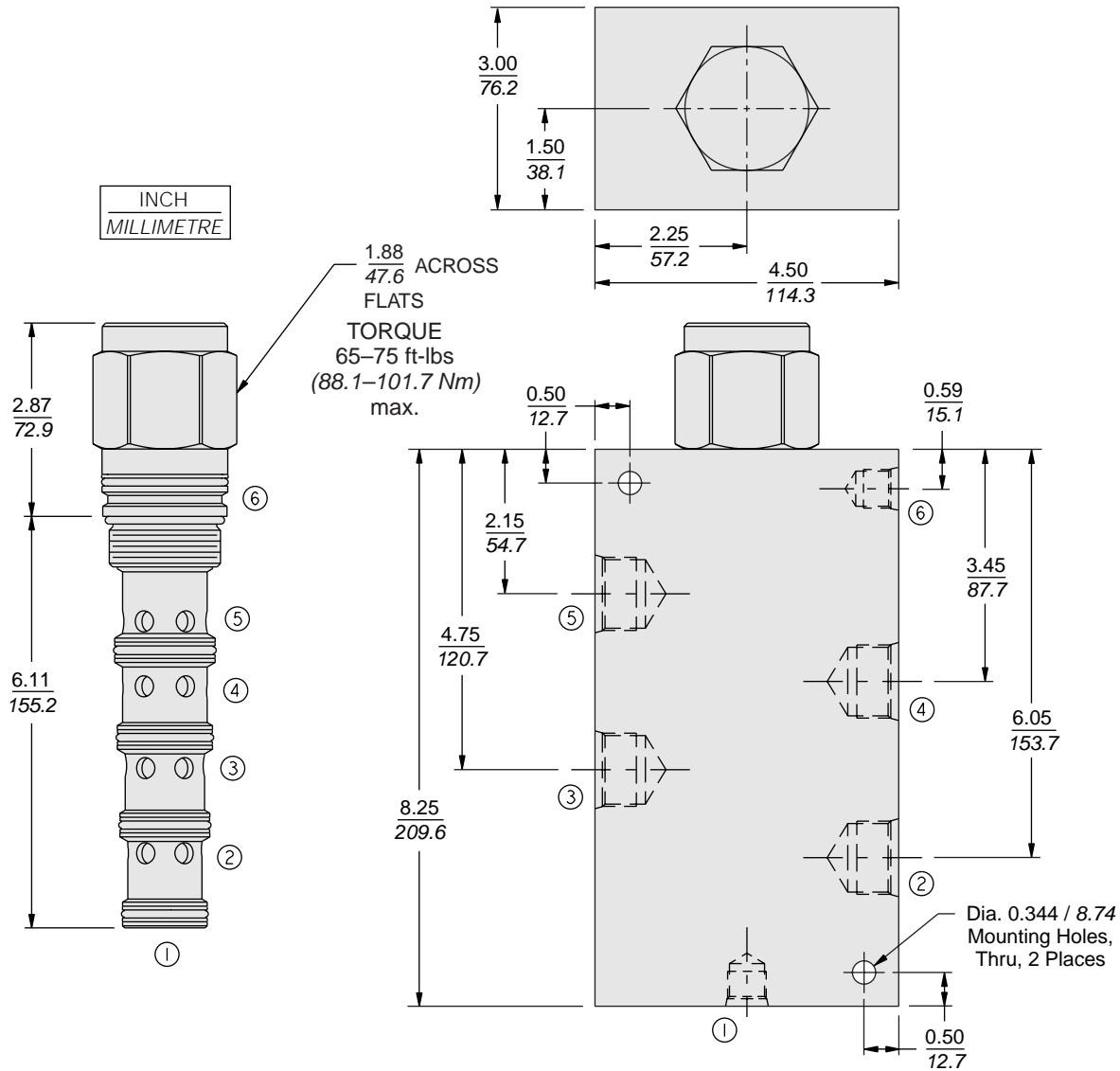
### ISO:



## PERFORMANCE (Cartridge Only)



**DIMENSIONS**



**MATERIALS**

**Cartridge:** Weight: 0.76 kg. (1.68 lbs.)  
Steel with hardened work surfaces.  
Zinc-plated exposed surfaces.  
Buna N O-rings and polyester elastomer back-ups standard.

**Ported Body:** Ductile Iron,  
Rated to 345 bar (5000 psi).  
See page 8.042.1.

**TO ORDER**

PD42-S60N - - -170<sup>‡</sup>

**Porting**  
Cartridge Only 0  
SAE 12 12TD  
SAE 16 16TD  
SAE 20 20TD  
\*3/4 in. BSP 6BD  
\*1 in. BSP 8BD  
\*1-1/4 in. BSP 10BD  
\*BSP Body; U.K. Mfr. Only

\*170 psi (11.7 bar) bias spring standard. Optional bias springs considered on OEM request.

**Seals**  
N Buna N (Std.)  
NS Buna N with Sealed Spool between ① and ②  
P Polyurethane  
PS Polyurethane with Sealed Spool between ① and ②  
V Fluorocarbon  
VS Fluorocarbon with Sealed Spool between ① and ②

Note: Polyurethane seals are required for operation over 240 bar/3500 psi