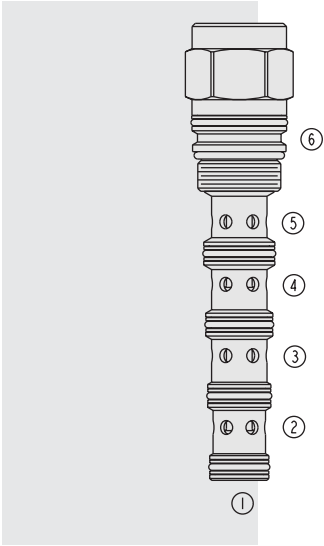


PD16-S61N Piloted 4-Way Spool



DESCRIPTION

A screw-in, cartridge-style, pilot-operated, spool-type, hydraulic directional valve.

OPERATION

When in neutral the **PD16-S61N** allows flow between ports ② and ③, and between ports ④ and ⑤. On remote pilot signal at ①, the valve's spool shifts to allow flow between ③ and ④ while blocking ② and ⑤. The spring chamber is vented to the tank through port ⑥. The vented spring chamber allows the valve to be fully pressurized at ports ①, ②, ③, ④ and ⑤ without affecting required pilot pressure. Pressure at port ⑥ will affect required pilot pressure.

FEATURES

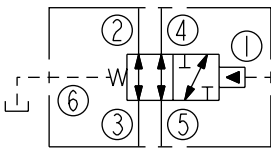
- Hardened spool and cage for long life.
- 60, 110 and 170 psi bias springs available.

RATINGS

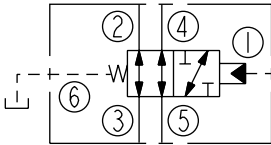
- Operating Pressure:** 240 bar (3500 psi)
- Flow:** 0–151 lpm (0–40 gpm); See Performance Chart
- Maximum Internal Leakage:** at 207 bar (3000 psi): 164 ml/minute (10 cu. in./minute)
- Pilot Pressure Required:** 4.1 bar (60 psi) minimum
- Oil Volume Required to Full Shift:** 1.5 cc (0.09 cu. in.)
- Temperature:** -40 to 120°C
- Filtration:** See page 9.010.1
- Fluids:** Mineral-based or synthetics with lubricating properties at viscosities of 7.4 to 420 cSt (50 to 2000 sus); See Temperature and Oil Viscosity, page 9.060.1
- Installation:** No restrictions; See page 9.020.1
- Cavity:** VC16-S6; See page 9.116.1
- Cavity Tool:** CT16-S6XX; See page 8.600.1
- Seal Kit:** SK16-S6X-BMMMM; See page 8.650.1

SYMBOLS

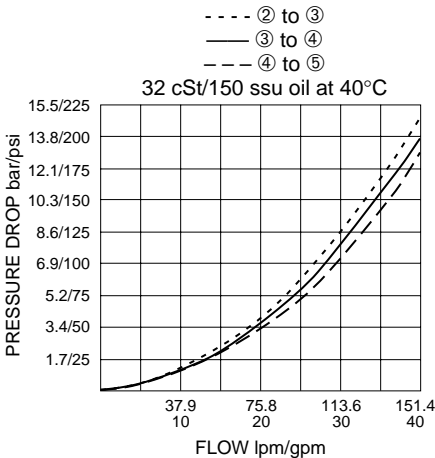
USASI:



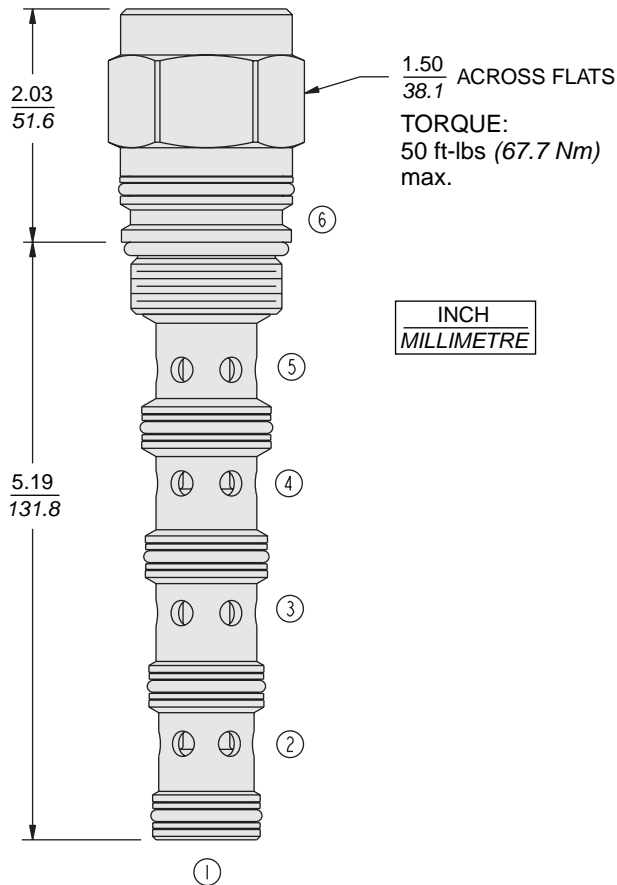
ISO:



PERFORMANCE (Cartridge Only)



DIMENSIONS



MATERIALS

Cartridge: Weight: 0.25 kg. (0.55 lbs.)
Steel with hardened work surfaces.
Zinc-plated exposed surfaces.
Buna N O-rings and polyester elastomer back-ups standard.

Ported Body: Consult factory.

TO ORDER

PD16-S61N -

Porting
Cartridge Only 0

Bias Spring[†]

60 4.1 bar (60 psi)
110 7.6 bar (110 psi)
170 11.7 bar (170 psi)

Optional bias springs considered on OEM request.

[†]Note: 110 psi bias spring is the minimum required for use with sealed spool.

Seals

N Buna N (Std.)
V Fluorocarbon
NS Buna N w/Sealed Spool ① to ② only
VS Fluorocarbon w/Sealed Spool ① to ② only