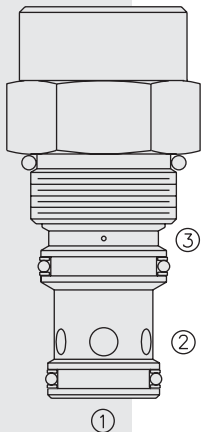


# DIRECTIONAL VALVES

## ECR16-S35 Piloted Logic Element w/Built-in Relief



### DESCRIPTION

A spool-type, screw-in, cartridge-style, hydraulic directional element, with a built-in, non-adjustable pressure relief valve.

### OPERATION

The **ECR16-S35** is a spring-biased blocking valve which will shift to allow full flow from ① to ② only when pressure at ① exceeds the cumulative pressure of ③, plus the bias spring pressure value.

If the pressure at ① and ③ exceeds the relief valve setting, the valve operates as a relief valve, opening the ① to ② flow path.

### FEATURES

- Multiple function/application potential.
- Low pressure drop.
- Industry common cavity.

### RATINGS

**Operating Pressure:** 240 bar (3500 psi)

**Proof Pressure:** 420 bar (6090 psi)

**Flow:** 189 lpm (50 gpm) max.

**Internal Leakage:** 164 ml/minute (10 cu. in./minute) max. at 207 bar (3000 psi)

**Temperature:** -40 to 120°C with standard Buna seals

**Filtration:** See page 9.010.1

**Fluids:** Mineral-based or synthetics with lubricating properties at viscosities of 7.4 to 420 cSt (50 to 2000 sus); See Temperature and Oil Viscosity, page 9.060.1

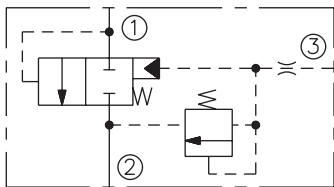
**Installation:** No restrictions; See page 9.020.1

**Cavity:** VC16-S3; See page 9.116.1

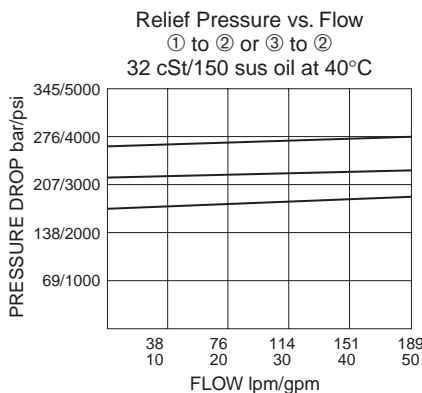
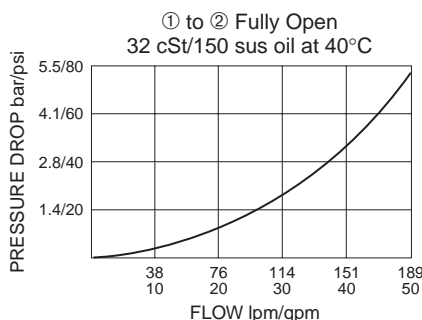
**Cavity Tool:** CT16-S3xx; See page 8.600.1

**Seal Kit:** SK16-S3x-MM; See page 8.650.1

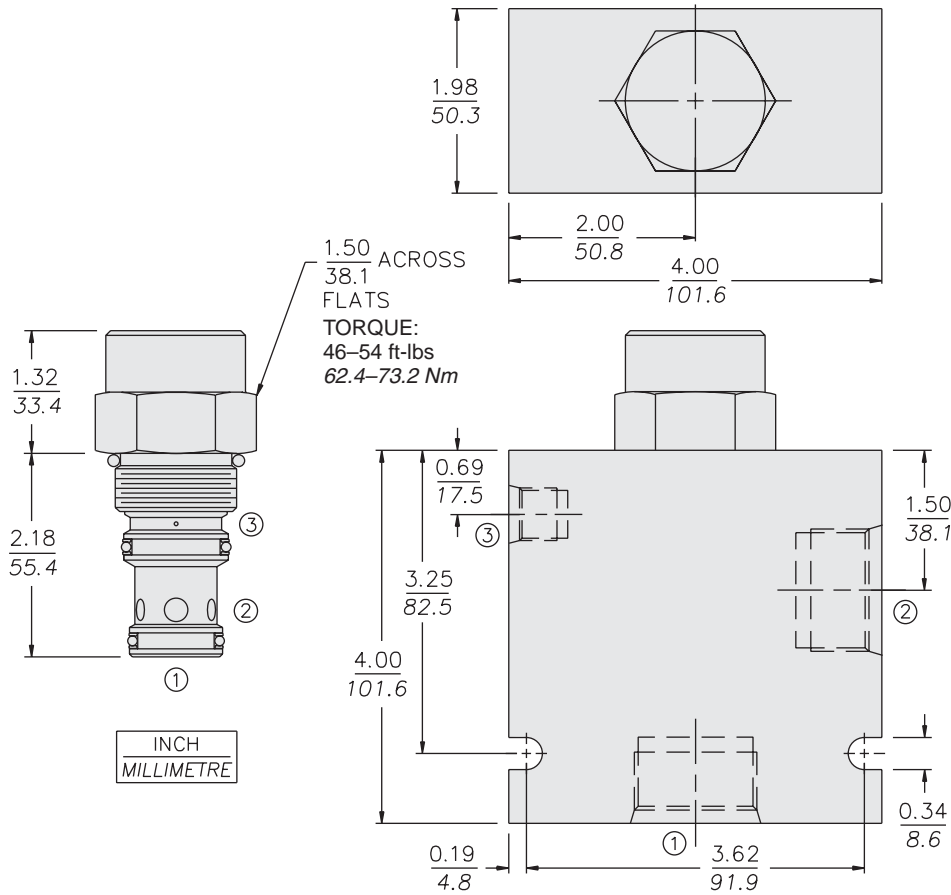
### SYMBOL



### PERFORMANCE (Cartridge Only)



**DIMENSIONS**



**MATERIALS**

**Cartridge:** Weight: 0.43 kg. (0.95 lbs.)  
Steel with hardened work surfaces.  
Zinc-plated exposed surfaces.  
Buna N O-rings and polyester  
elastomer back-ups standard.

**Standard Ported Body:** Weight:  
1.50 kg. (3.3 lbs.) Anodized high-  
strength 6061 T6 aluminum alloy,  
rated to 207 bar (3000 psi). Ductile  
iron bodies available; dimensions  
may differ. See page 8.016.1.

**TO ORDER**

