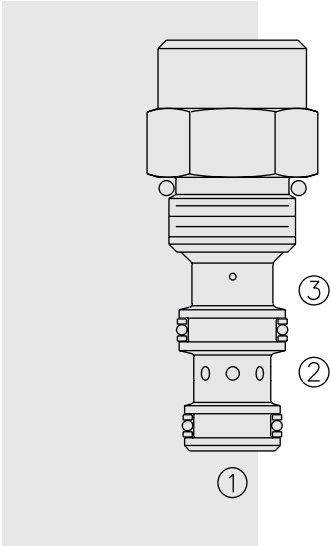


# EV58-34 Vented Directional Element



## DESCRIPTION

A spool-type, screw-in, cartridge-style, hydraulic directional element, with multi-function potential when used with other directional, pressure, or flow control valves.

## OPERATION

The EV58-34 is a spring-biased blocking valve which will shift to allow full flow from ① to ② only when port ③ is vented to create a pressure drop across the internal orifice which exceeds the pressure of the bias spring value.

## FEATURES

- Multiple function/application potential.
- Low pressure drop.
- Industry common cavity
- Compact size.

## RATINGS

**Maximum Operating Pressure:** 345 bar (5000 psi) with steel or ductile housing; 207 bar (3000 psi) with aluminum housing.

**Flow Rate:** Up to 37.9 lpm (10 gpm)

**Maximum Internal Leakage:**

- 131 ml per minute (8 cu. in. per minute) at 207 bar (3000 psi)
- 229 ml per minute (14 cu. in. per minute) at 345 bar (5000 psi)

**Bias Springs:**

- Code 10** 0.7 bar (10 psi)
- Code 40** 2.8 bar (40 psi)
- Code 80** 5.5 bar (80 psi)
- Code 110** 7.6 bar (110 psi)
- Code 150** 10.3 bar (150 psi)

**Temperature:** -40 to 160°C

**Filtration:** See page 9.010.1

**Fluids:** Mineral-based or synthetics with lubricating properties at viscosities of 7.4 to 420 cSt (50 to 2000 sus); See Temperature and Oil Viscosity, page 9.060.1

**Installation:** No restrictions; See page 9.020.1

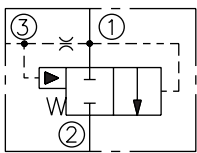
**Cavity:** VC08-3; See page 9.108.1

**Cavity Tool:** CT08-3XX; See page 8.600.1

**Seal Kit:** SK08-3X-MM; See page 8.650.1

## SYMBOLS

**USASI/ISO:**



## PERFORMANCE (Cartridge Only)

