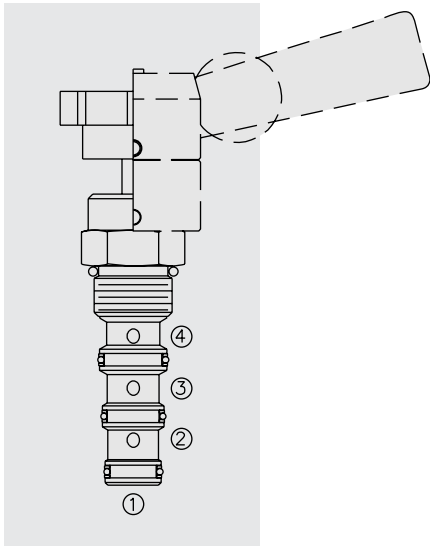


## MR10-41 Manual Rotary 4-Way, 2-Pos. Directional Valve



### DESCRIPTION

A manually-operated four-way, two-position directional valve, with adaptability to a variety of adjustment operators (ordered separately).

### OPERATION

Two positions, 90° rotation. In extreme counterclockwise position all ports are closed. In extreme clockwise position, ports ① and ④ are open while ports ② and ③ are open. All ports are closed in transition.

### FEATURES

- Two-position detent or infinite friction lock may be ordered separately.
- May be fully pressurized at all ports.
- Optional lock-down bracket.
- Heavy-duty construction.
- Industry common cavity.

### RATINGS

**Operating Pressure:** 240 bar (3500 psi)

**Max. Flow:** See Performance Chart

**Internal Leakage:** 164 cc/minute (10 cu. in./minute) at 240 bar (3500 psi)

**Temperature:** -40 to 120°C with standard Buna N seals

**Fluids:** Mineral-based or synthetics with lubricating properties at viscosities of 7.4 to 420 cSt (50 to 2000 sus); See Temperature and Oil Viscosity, page 9.060.1

**Installation:** No position restrictions; See page 9.020.1

See page 4.990.2 for operator handles/knobs installation;

See page 4.990.1 for lock-down bracket installation.

**Cavity:** VC10-4; See page 9.110.2

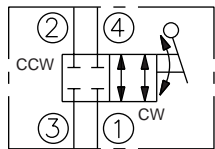
**Cavity Tool:** CT10-4XX; See page 8.600.1

**Seal Kit:** SK10-4X-MMM; See page 8.650.1

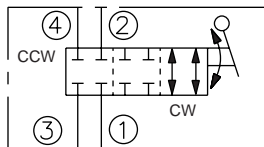
**Lock-Down Bracket Kit:** Part Number 5399000

### SYMBOLS

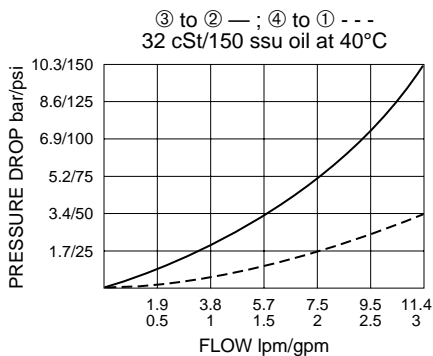
#### USASI/ISO:



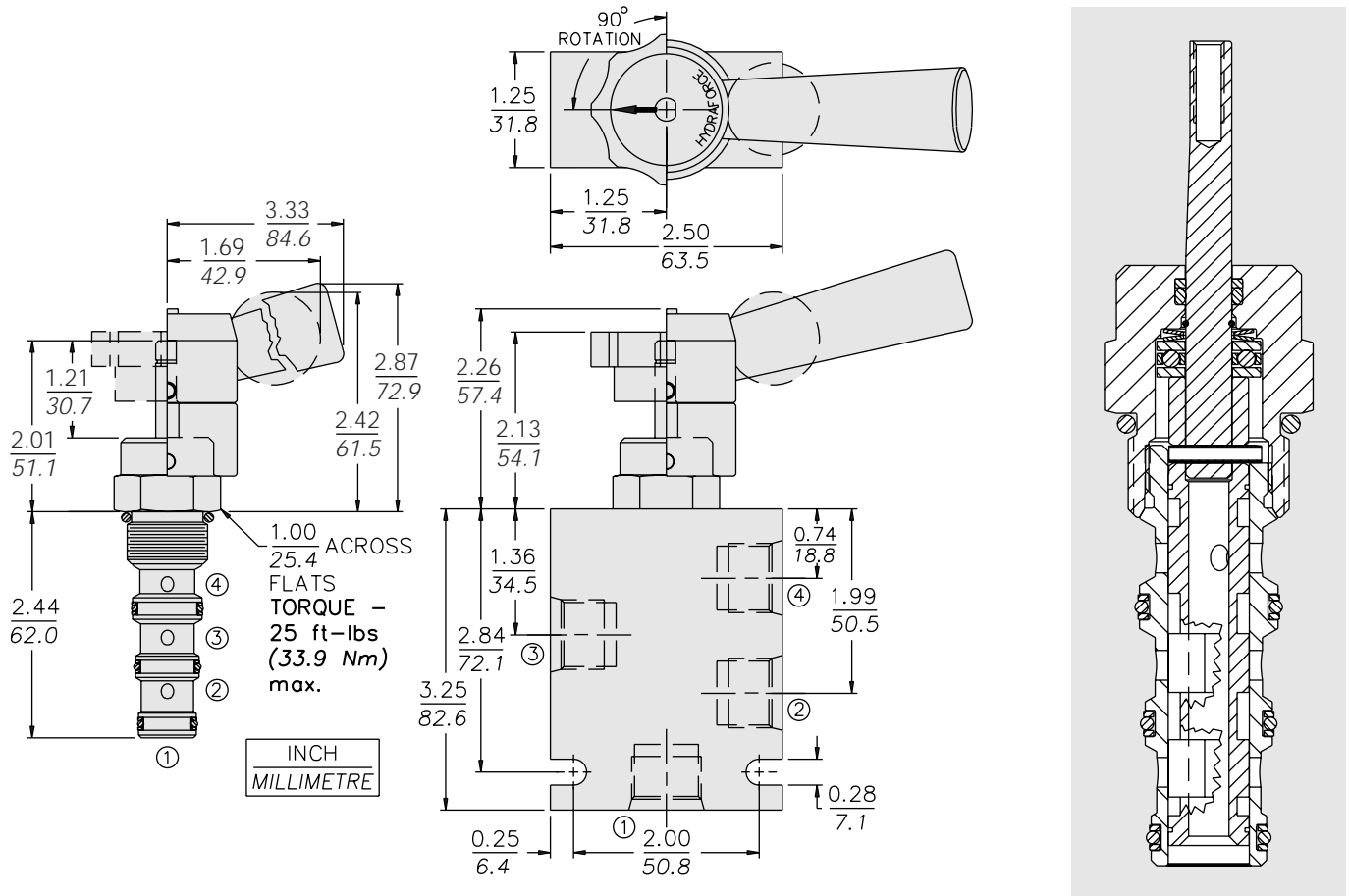
#### TRANSITION:



### PERFORMANCE (Cartridge Only)



**DIMENSIONS**



**MATERIALS**

**Cartridge:** Weight: 0.13 kg. (0.29 lbs.) Steel with hardened work surfaces. Zinc-plated exposed surfaces. Buna N O-rings and Fluorocarbon back-ups standard.

**Standard Ported Body:** Weight: 0.34 kg. (0.75 lbs.) Anodized high-strength 6061 T6 aluminum alloy, rated to 207 bar (3000 psi). Ductile iron bodies available; dimensions may differ. See page 8.010.1

**Lever-Type Handle:** (Sold Separately) Weight: 0.18 kg. (0.38 lbs.) Steel with hardened work surfaces. Zinc-plated exposed surfaces. Plastic lever arm.

**TO ORDER**

<b>MR10-41</b>	-	-	-
<b>Option</b>			
None (Blank)			
<b>Porting</b>			
Cartridge Only		<b>0</b>	
SAE 6		<b>6T</b>	
SAE 8		<b>8T</b>	
SAE 8 with Lock-Down Bracket		<b>8TL</b>	
1/4 in. BSP*		<b>2B</b>	
3/8 in. BSP*		<b>3B</b>	
			<b>Seals</b>
			<b>N</b> Buna N (Std.)
			<b>V</b> Fluorocarbon

NOTE: To order standard operator kits, refer to pages 4.770.1 and 4.770.2