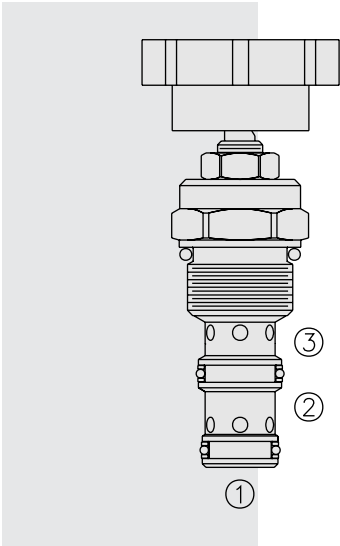


FR10-39 Flow Regulator, Pressure Compensated



DESCRIPTION

A screw-in, cartridge-style, adjustable orifice, pressure-compensated, manually-operated, bypass-type hydraulic flow regulating valve. It can be used as a priority-type flow regulator or a restrictive-type 2-way flow regulator when the bypass port (port ②) is blocked.

OPERATION

The **FR10-39** maintains a constant flow rate from ③ regardless of load pressure changes in the system downstream of ③, or in the bypass leg at ②. Reverse flow (③ to ①) bypasses the control orifice.

The regulated flow increases from closed to fully open, with counter-clockwise rotation of the knob.

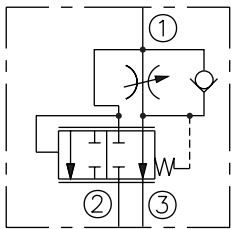
Note: When used as a bypass flow control in applications where the priority flow port will be blocked by external valving, bypass pressure drop will increase unless a small amount of leakage is provided for the priority port. Consult factory.

FEATURES

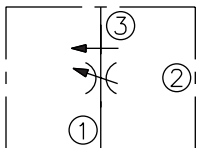
- Bypass port ② may be fully pressurized.
- Fine low-torque adjustment.
- Hardened steel parts for long life.
- Quiet, modulated response.
- Industry common cavity.

SYMBOLS

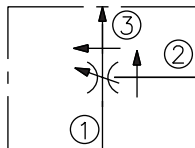
USAS/ISO:



2-Ported:



3-Ported:



RATINGS

Operating Pressure: 240 bar (3500 psi)

Flow Rate: 3-ported regulated flow: 0–38 lpm (0–10 gpm)
2-ported regulated flow: 0–34 lpm (0–9 gpm)

Note: For lower flow rates, see the FR10-33 valve (page 5.372.1)

Input Flow: 3-ported: 0–38 lpm (0–10 gpm) nominal; 0–57 lpm (0–15 gpm) max.

Internal Leakage: 33 cc/minute (2 cu. in./minute) at 207 bar (3000 psi)

Adjustment Torque Required: 1.7 Nm (15 inch-pounds) at 207 bar (3000 psi)

Temperature: -40 to 120°C

Filtration: See page 9.010.1

Fluids: Mineral-based or synthetics with lubricating properties at viscosities of 7.4 to 420 cSt (50 to 2000 sus); See Temperature and Oil Viscosity, page 9.060.1

Installation: No restrictions; See page 9.020.1

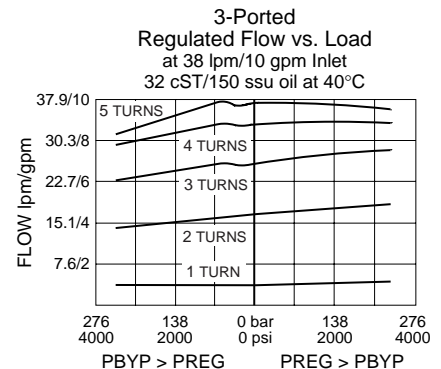
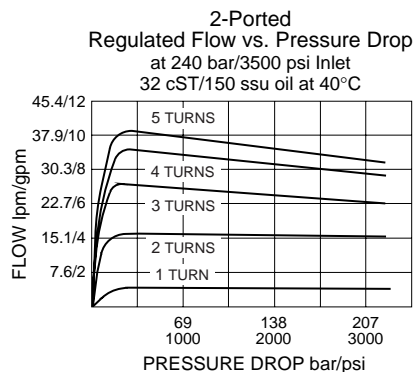
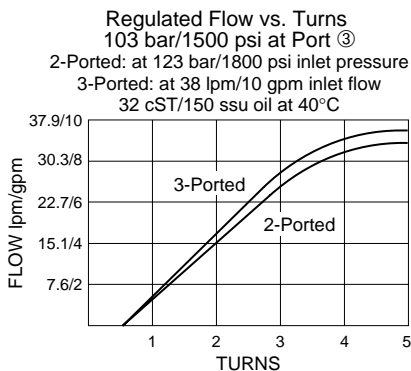
Cavity: VC10-3; See page 9.110.1

Cavity Tool: CT10-3XX; See page 8.600.1

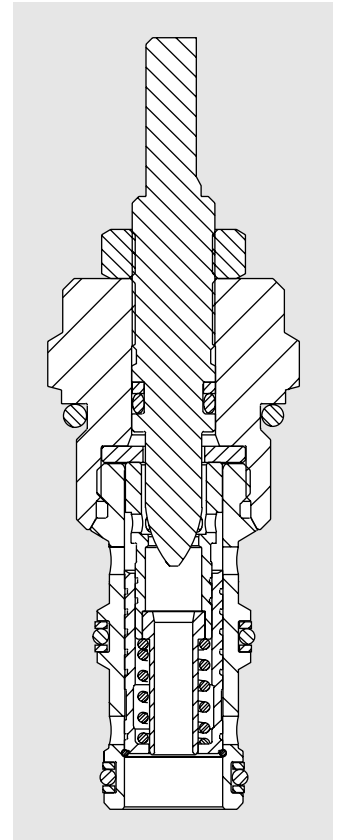
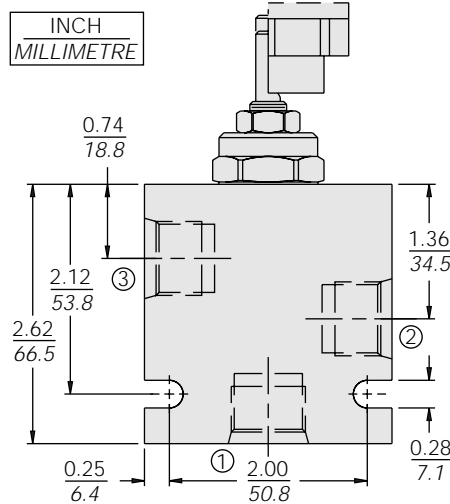
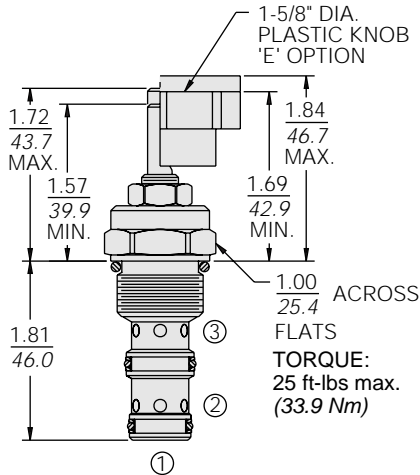
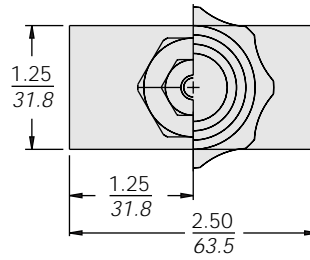
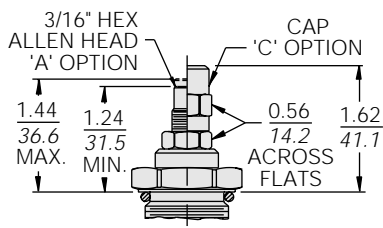
Seal Kit: SK10-3X-MM; See page 8.650.1

Knob Kit: Part Number 6113160

PERFORMANCE (Cartridge Only)

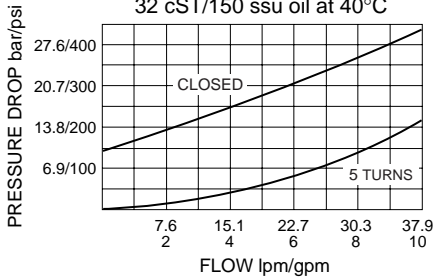


DIMENSIONS



PERFORMANCE (Cont'd.)

Pressure Drop vs. Reverse Flow from ③ to ①
34.5 bar/500 psi Inlet Pressure
32 cST/150 ssu oil at 40°C



MATERIALS

Cartridge: Weight: 0.30 kg. (0.68 lbs.)
Steel with hardened work surfaces.
Zinc-plated exposed surfaces.
Buna N O-rings and polyester elastomer back-ups standard.

Standard Ported Body: Weight: 0.36 kg. (0.80 lbs.) Anodized high-strength 6061 T6 aluminum alloy, rated to 207 bar (3000 psi). Ductile iron bodies available; dimensions may differ. See page 8.010.1

TO ORDER

FR10-39 - -

Adjustment Option	Blank				Seals
Extended Shaft Only	A				N Buna N (Std.)
3/16" Hex Allen Head	C				V Fluorocarbon
Option 'A' w/Cover Cap	E				
Plastic Knob					
					Porting
					0 Cartridge Only
					6T SAE 6
					8T SAE 8
					2B 1/4 in. BSP*
					3B 3/8 in. BSP*

*BSP Body; U.K. Mfr. Only