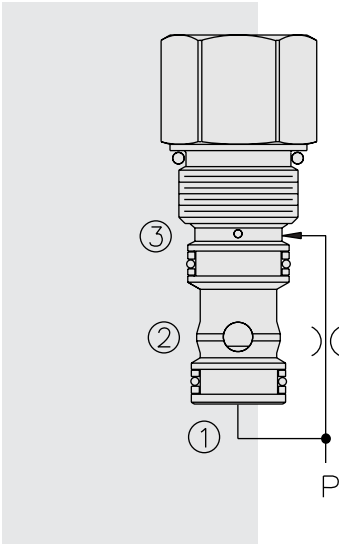


# EC10-S31 Pressure Compensator



## DESCRIPTION

A screw-in, cartridge-style pressure-compensator, intended for use upstream of a remote fixed or variable orifice to provide a constant flow rate regardless of load pressure changes.

## OPERATION

The **EC10-S31** delivers constant flow to port ① regardless of load pressure changes.

## FEATURES

- Hardened seat for long life and low leakage.
- Quiet, modulated response.
- Industry common cavity.

## RATINGS

**Operating Pressure:** Inlet: 240 bar (3500 psi)

**Maximum Compensated Flow:** 30.3 lpm (8 gpm) with 7.6 bar (110 psi) spring;  
22.7 lpm (6 gpm) with 5.5 bar (80 psi) spring

**Standard Compensator Bias Spring:** 5.5 bar (80 psid)

**Flow Maintenance:** see performance chart

**Temperature:** -40 to 120°C

**Filtration:** See page 9.010.1

**Fluids:** Mineral-based or synthetics with lubricating properties at viscosities of 7.4 to 420 cSt (50 to 2000 sus); See Temperature and Oil Viscosity, page 9.060.1

**Installation:** No restrictions; See page 9.020.1

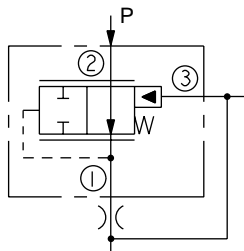
**Cavity:** VC10-S3; See page 9.110.1

**Cavity Tool:** CT10-S3-XX; See page 8.600.1

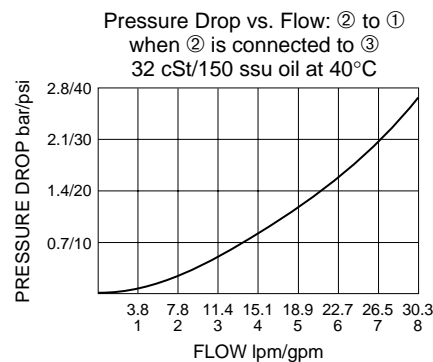
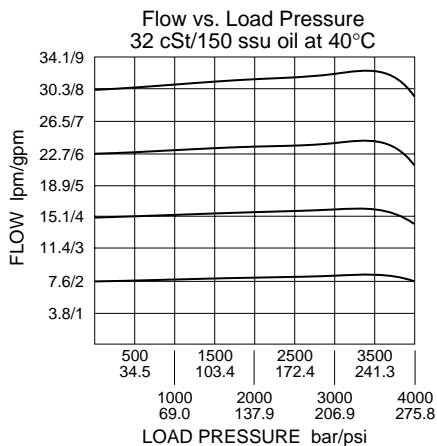
**Seal Kit:** SK10-S3X-MM; See page 8.650.1

## SYMBOLS

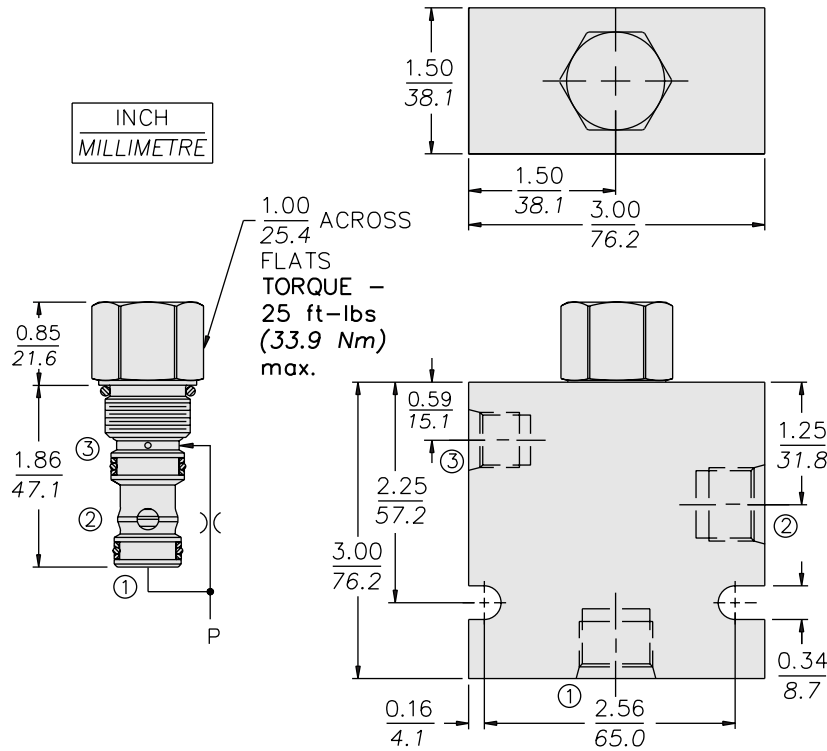
### USASI/ISO:



## PERFORMANCE (Cartridge Only)



**DIMENSIONS**



**MATERIALS**

**Cartridge:** Weight: 0.11 kg. (0.25 lbs.)  
Steel with hardened work surfaces.  
Zinc-plated exposed surfaces.  
Buna N O-rings and polyester elastomer back-ups standard.

**Standard Ported Body:** Weight:  
0.34 kg. (0.75 lbs.) Anodized high-strength 6061 T6 aluminum alloy, rated to 207 bar (3000 psi). Ductile iron bodies available; dimensions may differ. See page 8.010.1

**TO ORDER**

