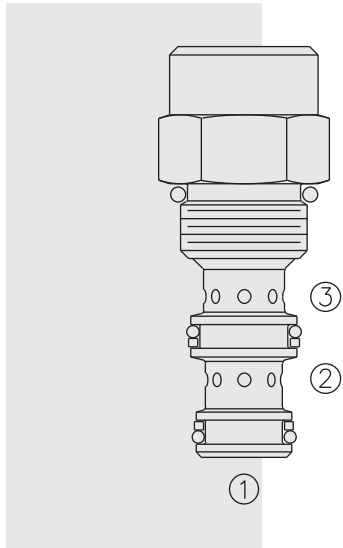


# EC08-32 Pressure-Compensator w/Load Sense



## DESCRIPTION

A screw-in, cartridge-style, load sense, flow-on-demand pressure-compensator.

## OPERATION

With inlet flow at ②, the **EC08-32** will deliver required flow at ③ in response to load differential pressure sensed at ①.

## FEATURES

- Hardened parts for long life.
- Quiet, modulated response.
- Industry common cavity.

## RATINGS

**Operating Pressure:** 241 bar (3500 psi)

**Proof Pressure:** 345 bar (5000 psi)

**Burst Pressure:** 1034 bar (15000 psi)

**Flow Rate:** 11.4 lpm (3.0 gpm) with 5.5 bar (80 psi) compensating spring;  
 18.9 lpm (5.0 gpm) with 10.3 bar (150 psi) compensating spring  
 30.3 lpm (8.0 gpm) with 17.2 bar (250 psi) compensating spring

**Temperature:** -40 to 120°C

**Filtration:** See page 9.010.1

**Fluids:** Mineral-based or synthetics with lubricating properties at viscosities of 7.4 to 420 cSt (50 to 2000 sus); See Temperature and Oil Viscosity, page 9.060.1

**Installation:** No restrictions; See page 9.020.1

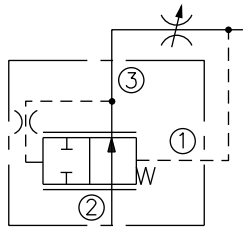
**Cavity:** VC08-3; See page 9.108.1

**Cavity Tool:** CT08-3XX; See page 8.600.1

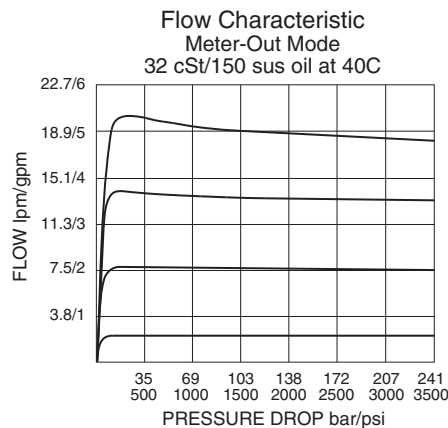
**Seal Kit:** SK08-3X-M; See page 8.650.1

## SYMBOL

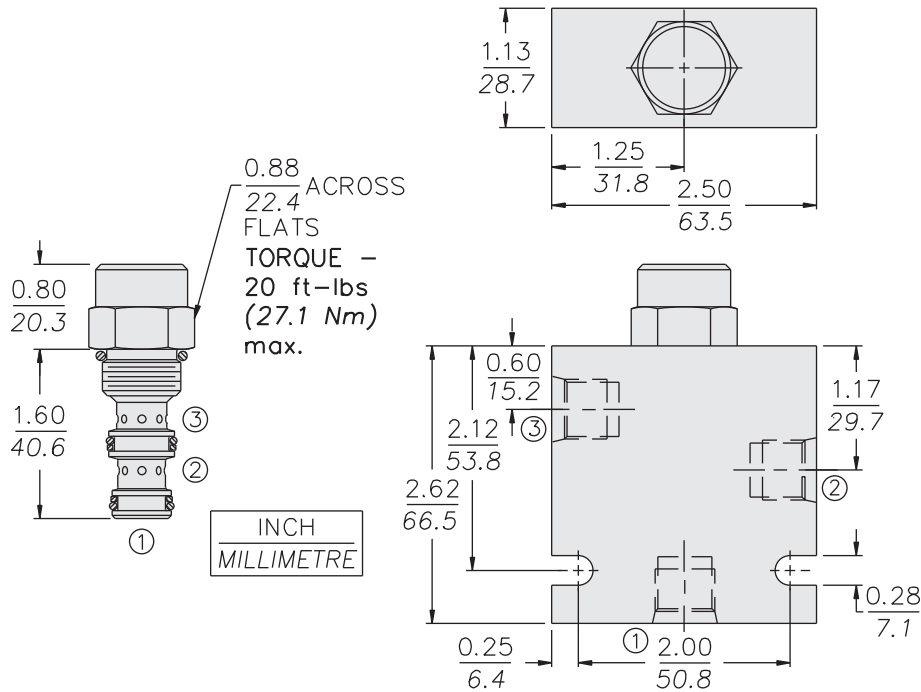
## USASI/ISO:



## PERFORMANCE (Cartridge Only)



**DIMENSIONS**



**MATERIALS**

**Cartridge:** Weight: 0.10 kg. (0.22 lbs.)  
Steel with hardened work surfaces.  
Zinc-plated exposed surfaces.  
Buna N O-rings and back-ups  
standard.

**Standard Ported Body:** Weight:  
0.27 kg. (0.60 lbs.) Anodized high-  
strength 6061 T6 aluminum alloy,  
rated to 207 bar (3000 psi). Ductile  
iron bodies available; dimensions  
may differ. See page 8.008.1.

**TO ORDER**

|                              |           |              |                           |
|------------------------------|-----------|--------------|---------------------------|
| <b>EC08-32 -</b>             |           | -            | -                         |
|                              |           |              |                           |
| <b>Porting</b>               |           |              | <b>Compensator Spring</b> |
| Cartridge Only               | <b>0</b>  | <b>80</b>    | 5.5 bar (80 psid)         |
| SAE 6                        | <b>6T</b> | <b>150</b>   | 10.3 bar (150 psid)       |
| 1/4 in. BSP*                 | <b>2B</b> | <b>250</b>   | 17.2 bar (250 psid)       |
| 3/8 in. BSP*                 | <b>3B</b> |              |                           |
| *BSP Body;<br>U.K. Mfr. Only |           |              |                           |
|                              |           | <b>Seals</b> |                           |
|                              |           | <b>N</b>     | Buna N (Std.)             |
|                              |           | <b>V</b>     | Fluorocarbon              |