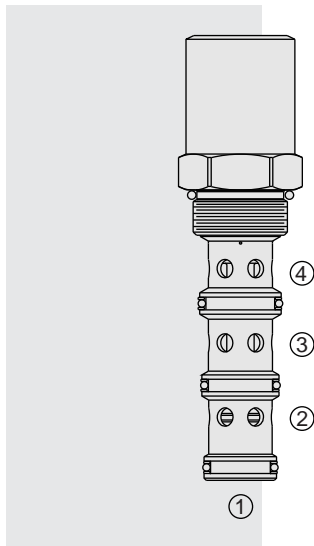


EC16-42 Pressure Compensator,



DESCRIPTION

A screw-in, cartridge-style, priority on-demand, pressure-compensating element intended to provide priority flow in required amount while allowing excess flow to be used for auxiliary functions.

OPERATION

The **EC16-42** is a priority-type valve delivering pump flow at port ③. Port ④ will deliver required priority flow regardless of load pressure. Excess flow exits at port ②. Port ① is the load sense port. All ports may be fully pressurized.

FEATURES

- Hardened parts for long life.
- Quiet, modulated response.
- Industry common cavity.

RATINGS

Maximum Operating Pressure: 240 bar (3500 psi)

Input Flow: 190 lpm (50 gpm)

Priority Flow Rate: 95 lpm (25 gpm)

Temperature: -40 to 120°C with Buna N seals

Filtration: See page 9.010.1

Fluids: Mineral-based or synthetics with lubricating properties at viscosities of 7.4 to 420 cSt (50 to 2000 sus); See Temperature and Oil Viscosity, page 9.060.1

Installation: No restrictions; See page 9.020.1

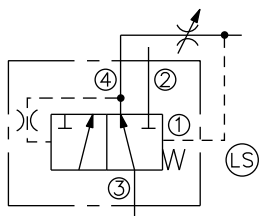
Cavity: VC16-4; See page 9.116.4

Cavity Tool: CT16-4XX; See page 8.600.1

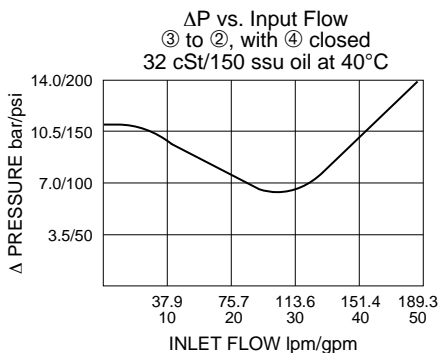
Seal Kit: SK16-4X-MMM; See page 8.650.1

SYMBOLS

USASI/ISO:



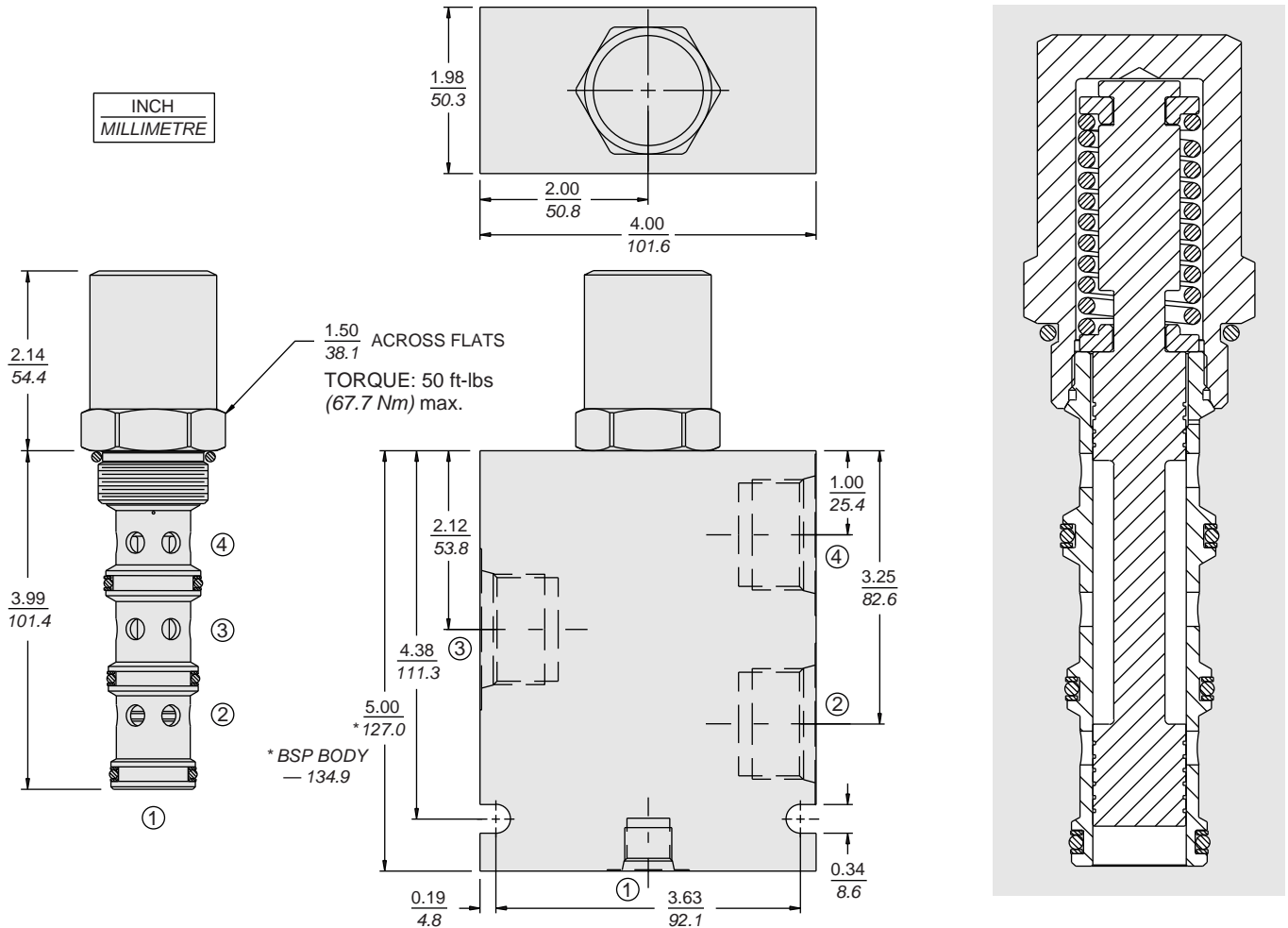
PERFORMANCE (Cartridge Only)



with Static Load Sense

EC16-42

DIMENSIONS



MATERIALS

Cartridge: Weight: 0.56 kg. (1.23 lbs.)
Steel with hardened work surfaces.
Zinc-plated exposed surfaces.
Buna N O-rings and TFE back-ups standard.

Standard Ported Body: Weight:
1.50 kg. (3.30 lbs.); Anodized high-strength 6061 T6 aluminum alloy, rated to 207 bar (3000 psi). Ductile iron bodies available; dimensions may differ. See page 8.016.1.

TO ORDER

EC16-42 - - -

| | | |
|-----------------------|-----|---------------------------|
| Porting | 0 | Compensator Spring |
| Cartridge Only | 12T | 80 5.51 bar (80 psid) |
| SAE 12; Port 1: SAE 6 | 16T | 150 10.34 bar (150 psid) |
| SAE 16; Port 1: SAE 6 | | |
| | | Seals |
| | | N Buna N (Std.) |
| | | V Fluorocarbon |