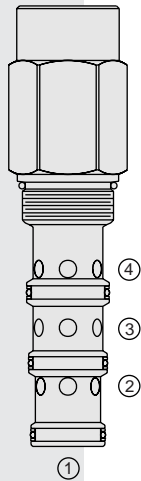


# EC42-M40 Pressure Compensator



## DESCRIPTION

A screw-in, cartridge-style pressure-compensating element intended for use with a remote fixed or variable orifice to yield a three-port (bypass-type), pressure-compensated, flow regulating hydraulic valve.

## OPERATION

The **EC42-M40** maintains a constant flow rate from ③ regardless of load pressure changes in the circuit downstream of ③.

The cartridge maintains a constant differential pressure from circuit point "P" to port ③ (see symbol), thereby regulating the hydraulic flow rate between the two points in the circuit. The EC42-M40 is a priority type regulator, delivering pump flow first to ③, then bypassing excess to ②. All ports may be fully pressurized.

## FEATURES

- Hardened parts for long life.
- Quiet, modulated response.
- Industry common cavity.

## RATINGS

**Operating Pressure:** Inlet: 240 bar (3500 psi)

**Maximum Inlet Flow:** 302.8 lpm (80.0 gpm)

**Maximum Regulated Flow:** 151.1 lpm (40.0 gpm) with 5.5 bar (80 psi) compensating spring; 208.2 lpm (55.0 gpm) with 10.3 bar (150 psi) compensating spring

**Maximum Bypass Flow:** 170.3 lpm (45.0 gpm) with 5.5 bar (80 psi) compensating spring; 208.2 lpm (55.0 gpm) with 10.3 bar (150 psi) compensating spring

**Flow Maintenance:** see performance chart

**Temperature:** -40 to 120°C with Buna N seals

**Filtration:** See page 9.010.1

**Fluids:** Mineral-based or synthetics with lubricating properties at viscosities of 7.4 to 420 cSt (50 to 2000 sus); See Temperature and Oil Viscosity, page 9.060.1

**Installation:** No restrictions; See page 9.020.1

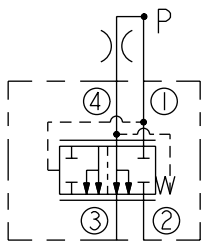
**Cavity:** VC42-M4; See page 9.142.1

**Cavity Tool:** CT42-M4XX; See page 8.600.1

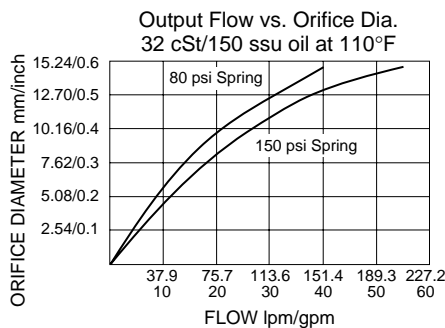
**Seal Kit:** SK42-4X-MMM; See page 8.650.1

## SYMBOLS

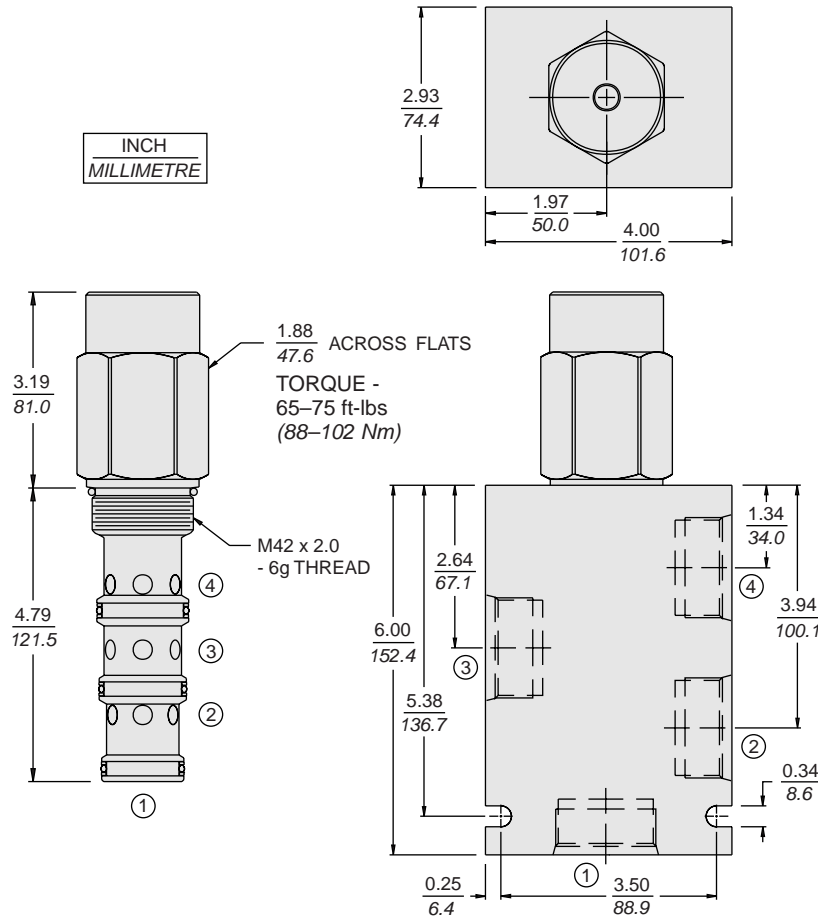
### USASI/ISO:



## PERFORMANCE (Cartridge Only)



**DIMENSIONS**



**MATERIALS**

**Cartridge:** Weight: 1.56 kg. (3.44 lbs.)  
Steel with hardened work surfaces.  
Zinc-plated exposed surfaces.  
Buna N O-rings and polyester  
elastomer back-ups standard.

**Standard Ported Body:** Weight:  
2.8 kg. (6.2 lbs.) Anodized high-  
strength 6061 T6 aluminum alloy,  
rated to 207 bar (3000 psi). Ductile  
iron bodies available; dimensions  
may differ. See page 8.042.1

**TO ORDER**

