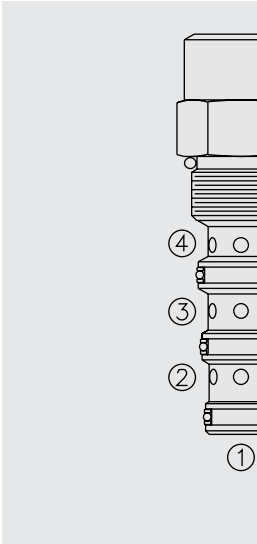


# EC10-42 Pressure Compensator



## DESCRIPTION

A screw-in, cartridge-style, priority-on-demand, pressure-compensator with a static load sense, intended to provide priority flow in the required amount, while allowing excess flow to be used for auxiliary functions.

## OPERATION

With inlet flow at ③, the **EC10-42** will deliver required priority flow at ④, regardless of load pressure. Excess flow exits at ②. Port ① is the load sense port. All ports may be fully pressurized.

## FEATURES

- Hardened parts for long life.
- Quiet, modulated response.
- Industry common cavity.

## RATINGS

**Operating Pressure:** Inlet: 240 bar (3500 psi)

**Maximum Regulated Flow:** 37.9 lpm (10 gpm) with 10.3 bar (150 psi) compensator spring; 30.2 lpm (8.0 gpm) with 5.5 bar (80 psi) compensator spring

**Flow Maintenance:** see performance chart

**Temperature:** -40 to 120°C with Buna N seals

**Filtration:** See page 9.010.1

**Fluids:** Mineral-based or synthetics with lubricating properties at viscosities of 7.4 to 420 cSt (50 to 2000 sus); See Temperature and Oil Viscosity, page 9.060.1

**Installation:** No restrictions; See page 9.020.1

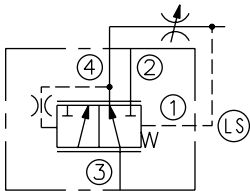
**Cavity:** VC10-4; See page 9.110.1

**Cavity Tool:** CT10-4-XXX; See page 8.600.1

**Seal Kit:** SK10-4X-MMM; See page 8.650.1

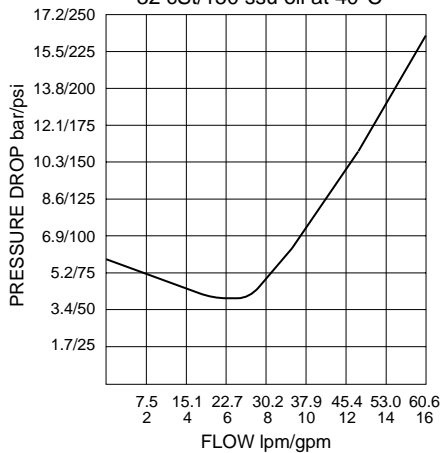
## SYMBOLS

### USASI/ISO:



## PERFORMANCE (Cartridge Only)

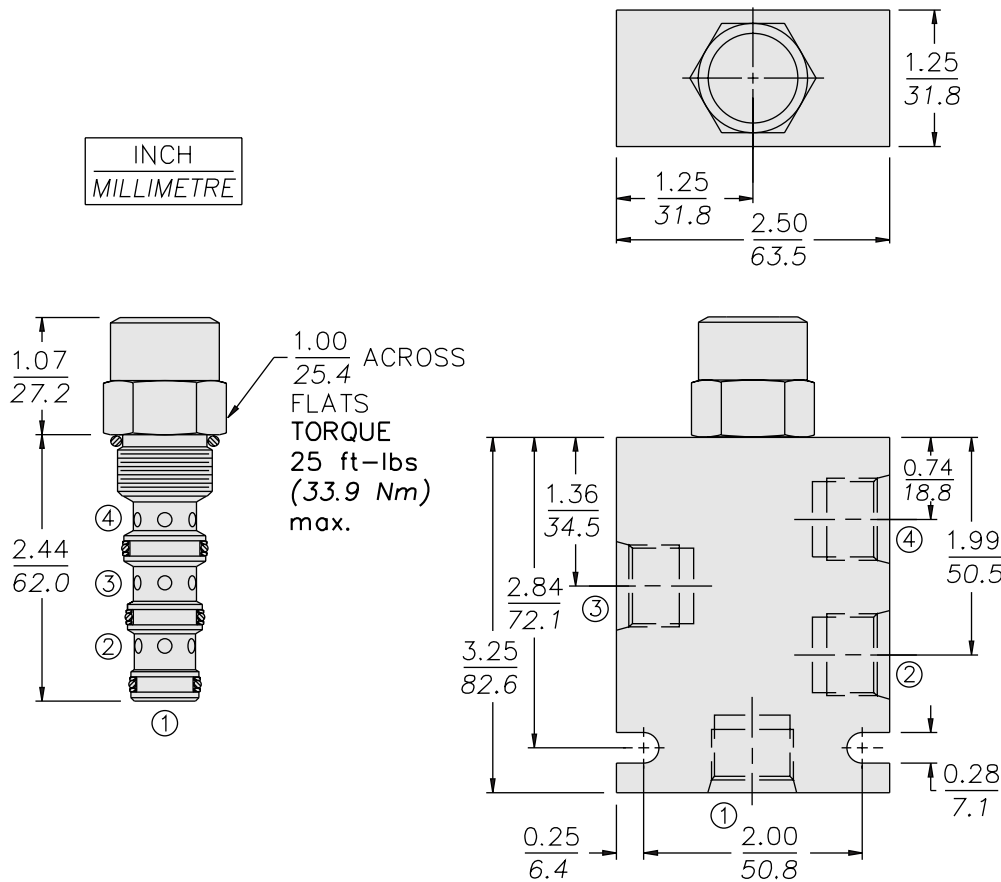
Pressure Drop vs. Inlet Flow  
 ③ to ②; Port ④ closed; Port ② no load;  
 150 psi Compensator Spring  
 32 cSt/150 ssu oil at 40°C



*with Static Load Sense*

**EC10-42**

**DIMENSIONS**



**MATERIALS**

**Cartridge:** Weight: 0.16 kg. (0.35 lbs.)  
Steel with hardened work surfaces.  
Zinc-plated exposed surfaces.  
Buna N O-rings and polyester elastomer back-ups standard.

**Standard Ported Body:** Weight: 0.34 kg. (0.75 lbs.); Anodized high-strength 6061 T6 aluminum alloy, rated to 207 bar (3000 psi). Ductile iron bodies available; dimensions may differ. See page 8.010.1

**TO ORDER**

