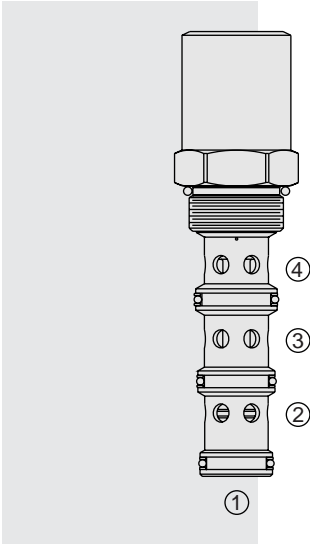


# EC16-42 Pressure Compensator,



## DESCRIPTION

A screw-in, cartridge-style, priority on-demand, pressure-compensating element intended to provide priority flow in required amount while allowing excess flow to be used for auxiliary functions.

## OPERATION

The **EC16-42** is a priority-type valve delivering pump flow at port ③. Port ④ will deliver required priority flow regardless of load pressure. Excess flow exits at port ②. Port ① is the load sense port. All ports may be fully pressurized.

## FEATURES

- Hardened parts for long life.
- Quiet, modulated response.
- Industry common cavity.

## RATINGS

**Maximum Operating Pressure:** 240 bar (3500 psi)

**Input Flow:** 190 lpm (50 gpm)

**Priority Flow Rate:** 95 lpm (25 gpm)

**Temperature:** -40 to 120°C with Buna N seals

**Filtration:** See page 9.010.1

**Fluids:** Mineral-based or synthetics with lubricating properties at viscosities of 7.4 to 420 cSt (50 to 2000 sus); See Temperature and Oil Viscosity, page 9.060.1

**Installation:** No restrictions; See page 9.020.1

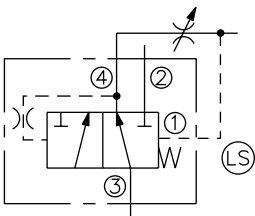
**Cavity:** VC16-4; See page 9.116.4

**Cavity Tool:** CT16-4XX; See page 8.600.1

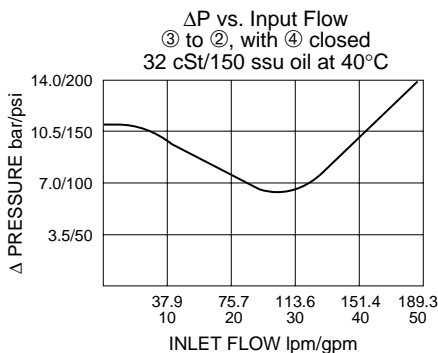
**Seal Kit:** SK16-4X-MMM; See page 8.650.1

## SYMBOLS

### USASI/ISO:



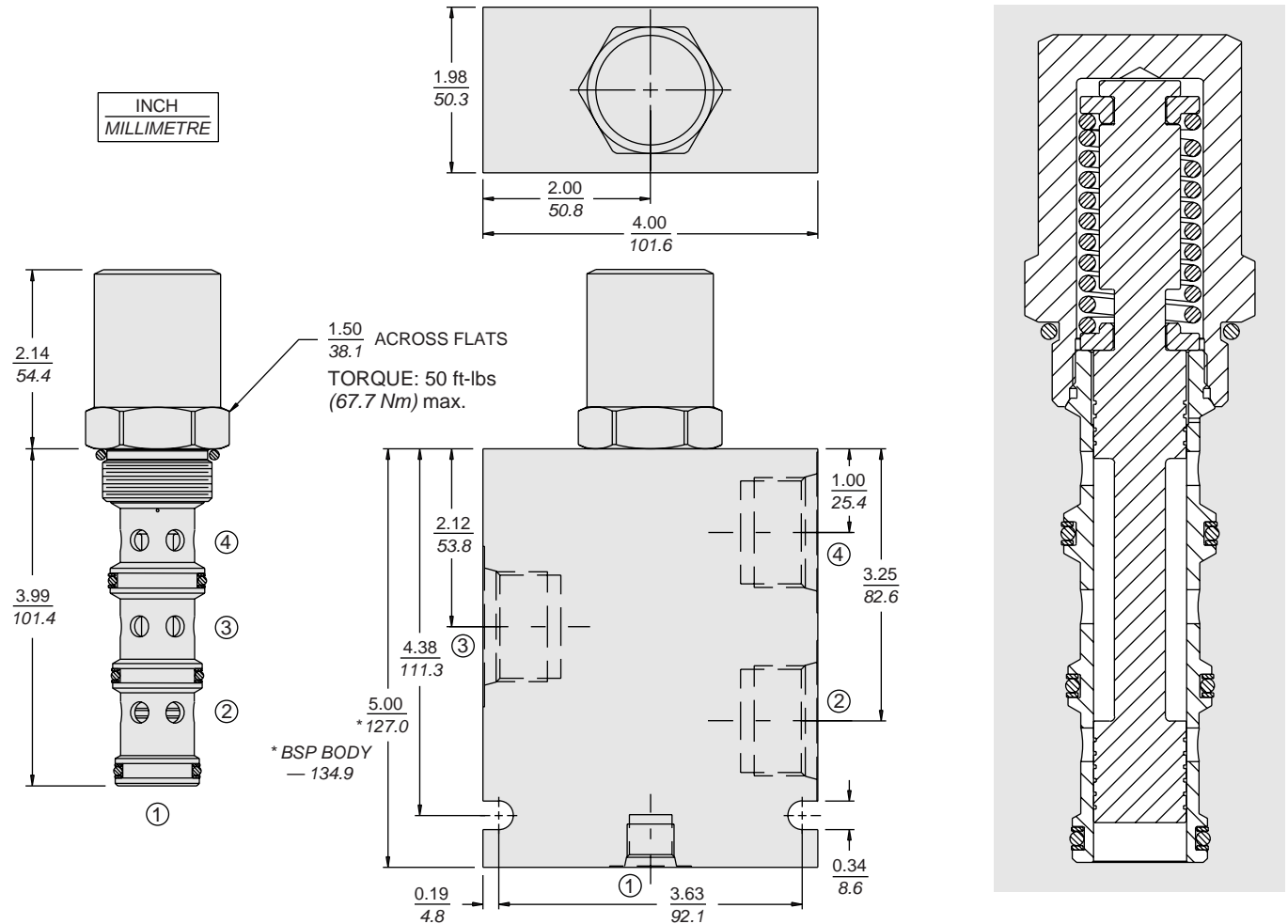
## PERFORMANCE (Cartridge Only)



with Static Load Sense

EC16-42

**DIMENSIONS**



**MATERIALS**

**Cartridge:** Weight: 0.56 kg. (1.23 lbs.)  
Steel with hardened work surfaces.  
Zinc-plated exposed surfaces.  
Buna N O-rings and TFE back-ups standard.

**Standard Ported Body:** Weight:  
1.50 kg. (3.30 lbs.); Anodized high-strength 6061 T6 aluminum alloy, rated to 207 bar (3000 psi). Ductile iron bodies available; dimensions may differ. See page 8.016.1.

**TO ORDER**

EC16-42 - - -

<b>Porting</b>	0	<b>Compensator Spring</b>
Cartridge Only	12T	80 5.51 bar (80 psid)
SAE 12; Port 1: SAE 6	16T	150 10.34 bar (150 psid)
SAE 16; Port 1: SAE 6		
	<b>Seals</b>	
	N Buna N (Std.)	
	V Fluorocarbon	