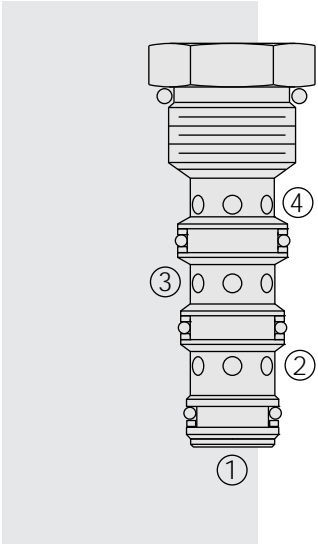


FD52-45 Flow Divider/Combiner . . . Heavy Duty,



DESCRIPTION

A heavy duty, multifunction, screw-in, cartridge-style, spool-type flow divider/combiner.

OPERATION

In the dividing mode, the **FD52-45** will divert input flow from port ③ to ports ② and ④, based on the ratio specified, regardless of operating pressure. When the flow direction is reversed, the valve will combine flows from ② and ④ to port ③. Synchronizing flow is provided in both the dividing and combining modes at "bottomed" conditions in cylinder applications and at "stalled" conditions in motor applications.

FEATURES

- Hardened parts for long life.
- Quiet, modulated response.
- Wide operating flow range.
- Synchronizing in dividing and combining modes.
- Floating cage — High installation torque.
- Industry-common cavity.

RATINGS

Operating Pressure: 345 bar (5000 psi)

Flow Options:

Input Flow: 60.6 lpm (16 gpm); Ratio: 50:50; Model Code: 44

Input Flow: 90.8 lpm (24 gpm); Ratio: 50:50; Model Code: 66

Flow Accuracy: 10% from 25–100% of rated flow

Temperature: -40 to 120°C

Filtration: See page 9.010.1

Fluids: Mineral-based or synthetics with lubricating properties at viscosities of 7.4 to 420 cSt (50 to 2000 sus); See Temperature and Oil Viscosity, page 9.060.1

Installation: No restrictions; See page 9.020.1

Note: Standard 12 size 4-way bodies should not be used with this product.

See page 8.012.1 for special flow divider bodies.

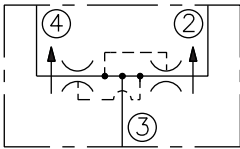
Cavity: VC12-4; See page 9.112.1 (Cavity Variation "A")

Cavity Tool: CT12-4X; See page 8.600.1

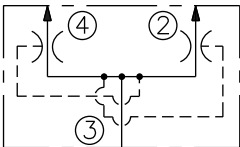
Seal Kit: SK12-4X-MMM; See page 8.650.1

SYMBOLS

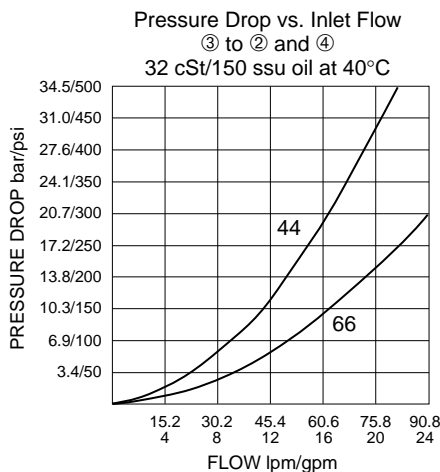
USASI:



ISO:



PERFORMANCE (Cartridge Only)

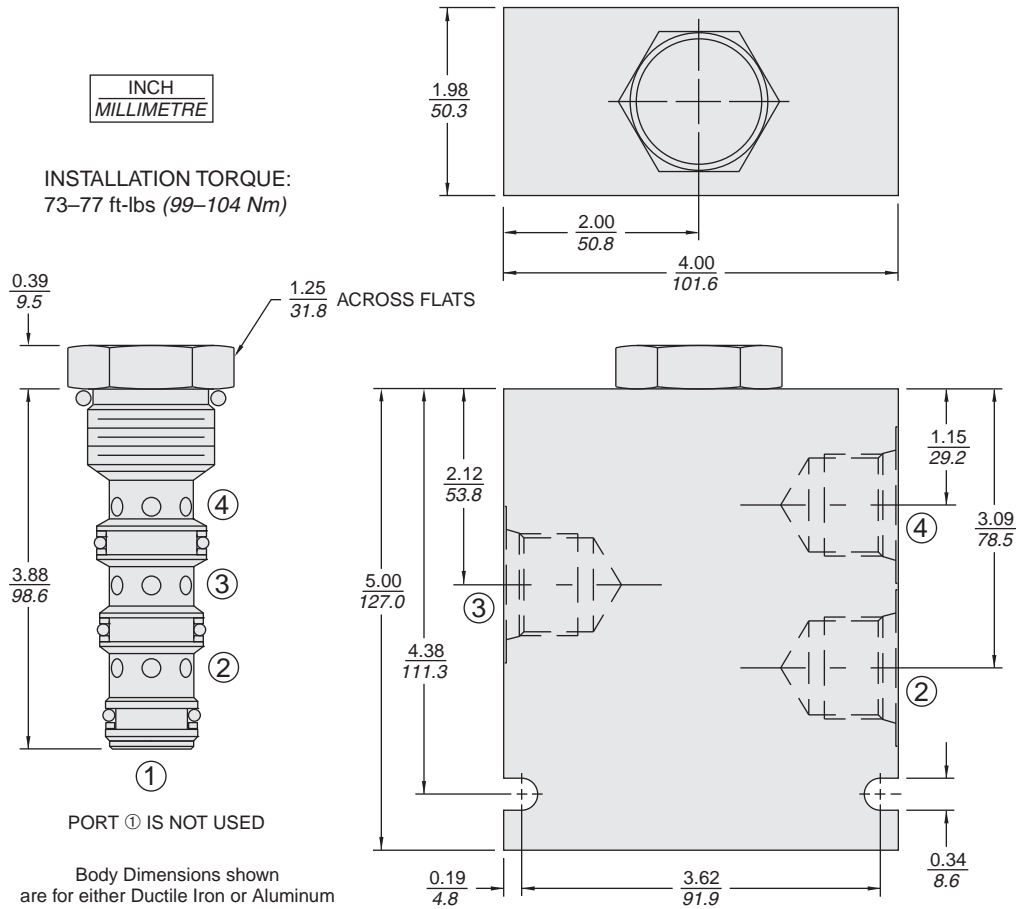


Note: This new FD52-45 flow divider incorporates the features of the older FDxx-40, FDxx-41 and FDxx-42 flow dividers in one product. It is designed to supersede the older models. OEM's are encouraged to consider this newer, more robust and versatile model for new applications.

Multifunction

FD52-45

DIMENSIONS



MATERIALS

Cartridge: Weight: 0.28 kg. (0.61 lbs.)
Steel with hardened work surfaces;
Zinc-plated exposed surfaces.
Buna N O-rings and polyester
elastomer back-ups standard.

Special Ported Body: Ductile iron
body required for operation over
207 bar (3000 psi). Aluminum
bodies are available for lower
pressure operation. See
page 8.012.1

TO ORDER

FD52-45 -

<p>Special FD-Type Ductile Iron Ported Bodies</p> <p>Cartridge Only 0</p> <p>SAE 8 8TD</p> <p>SAE 10 10TD</p> <p>SAE 12 12TD</p> <p>1/2 in. BSP* 4BD</p> <p>3/4 in. BSP* 6BD</p> <p>*BSP Body; U.K. Mfr. Only</p> <p>NOTE: Standard 12-size 4-way bodies should not be used for flow dividers. See Special, FD-type, flow divider bodies, page 8.012.1.</p>	<p>Flow Options (50/50 Ratio)</p> <p>44 16 gpm (60 lpm)</p> <p>66 24 gpm (90 lpm)</p> <p>Consult factory for other flow options.</p> <p>Seals</p> <p>N Buna N (Std.)</p> <p>V Fluorocarbon</p> <p>P Polyurethane (Required for operation over 240 bar/3500 psi)</p>
---	--