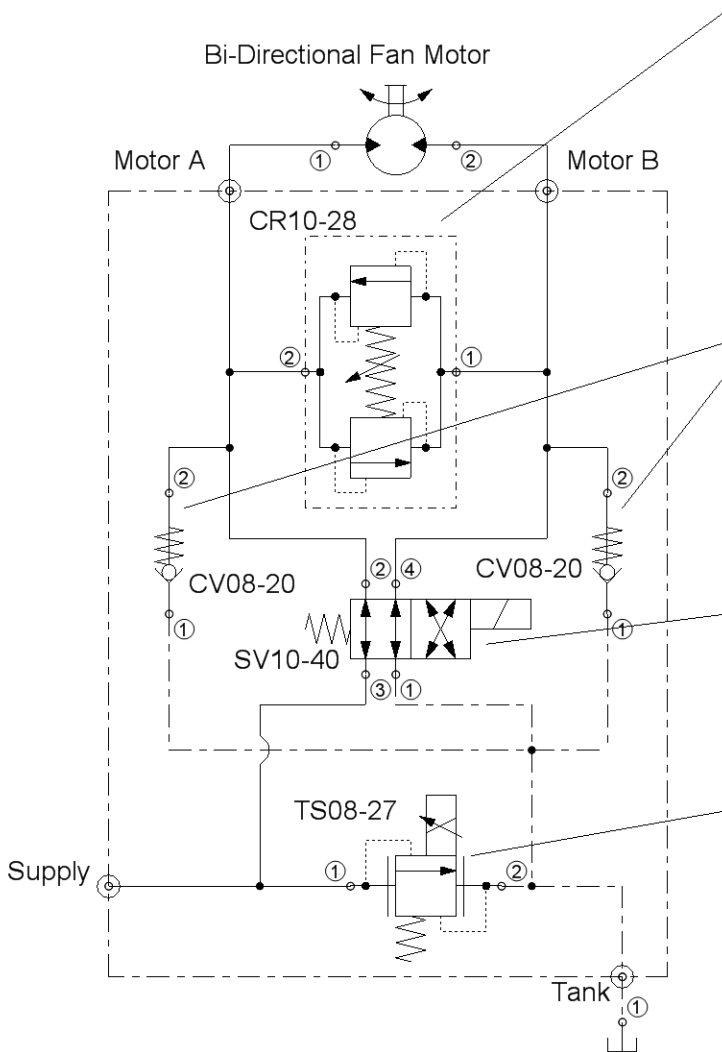


0-5 GPM, Reversing Fan Drive with Cross-Over Relief and Anti-Cavitation Protection, Fail High



Application Notes:



Motor Relief Protection: Single Cartridge, Bi-Directional Relief Valve to Protect Fan Drive Motor from Pressure Spikes Which Can Damage or Destroy Fan Drive Motor as well as other Fan Drive System Components (OPTIONAL - See "Notes" Section)

Anti-Cavitation Check Valves: Cartridge Check Valves with 4 psi Spring Bias Protect Fan Drive Motor from Cavitation During Over-Speeding/ Loss of Inlet Pressure Conditions. This prevents Cavitation which can Damage, Destroy, as well as Shorten the Fan Drive Motor's Life (OPTIONAL - See "Notes" Section)

Reversing Valve: Cartridge 2 Position 4 Way Valve Solenoid Actuated. When Energized, Fan Direction Reverses which Pressurizes the Intake, "Blowing Out" Contamination, Dust, Particles, etc. which Compromise the Fan Drives Efficiency, Effectively Keeping the Fan Drive Clean and in Proper Operation (OPTIONAL - See "Notes" Section)

Proportional Fan Drive Valve: Cartridge Proportional Relief Valve Solenoid Actuated. When De-Energized, Fan Drive Motor will see Full Pressure Driving the Fan Speed to Maximum RPM, With an Increasing Command Signal, Available Inlet Pressure Reduces to Proportionally Decrease Fan Speed. Upon Loss of Command Signal, Fan Speed will go to Maximum RPM (REQUIRED)

***Notes:** Fan Speed Is Typically Reduced Before Reversing which may Eliminate the Need for Cross-Over Relief Protection

Because Oil Typically Saturates the Tank Line, One Anti-Cavitation May be eliminated and Anti-Cavitation May be Accomplished by connecting the check valve directly between the Tank and Pressure lines at the inlet and outlet of the Reversing Valve- This Should be Determined by the End User's System Engineer

If Anti-Cavitation Protection is Determined to be Unnecessary, Both CV08-20's May be Eliminated

If Fan Drive Does Not Require Reversing, The SV10-40 May Be Eliminated

VALVES HAVE BEEN CONFIGURED FOR VISUAL PURPOSES. THE USER IS EXPECTED TO RECONFIGURE CARTRIDGES AS THEY SEE FIT FOR THEIR INDIVIDUAL FAN DRIVE APPLICATION

Disclaimer: Nothing in this document constitutes an implied warranty of merchantability or of fitness for a particular purpose. The information contained in this document is provided for technical illustration purposes only and may not be used as a statement of suitability for use in any particular application. Each application is unique and prospective purchasers should conduct their own tests and studies to determine the fitness of HydraForce's products for their particular purposes and specific applications.

THIS DRAWING IS THE PROPERTY OF HYDRAFORCE INC. 500 BARCLAY BOULEVARD, LINCOLNSHIRE, IL 60069. AND IS LOANED SUBJECT TO RETURN UPON DEMAND. IT IS NOT TO BE REPRODUCED OR USED DIRECTLY IN ANY WAY DETRIMENTAL TO THE INTEREST OF HYDRAFORCE. HYDRAFORCE HYDRAULICS LTD IS A WHOLLY OWNED SUBSIDIARY OF HYDRAFORCE INC.

HydraForce, Inc ®

0-5 GPM Fan 1

Rev: 1
By: HydraForce Applications
Date: