



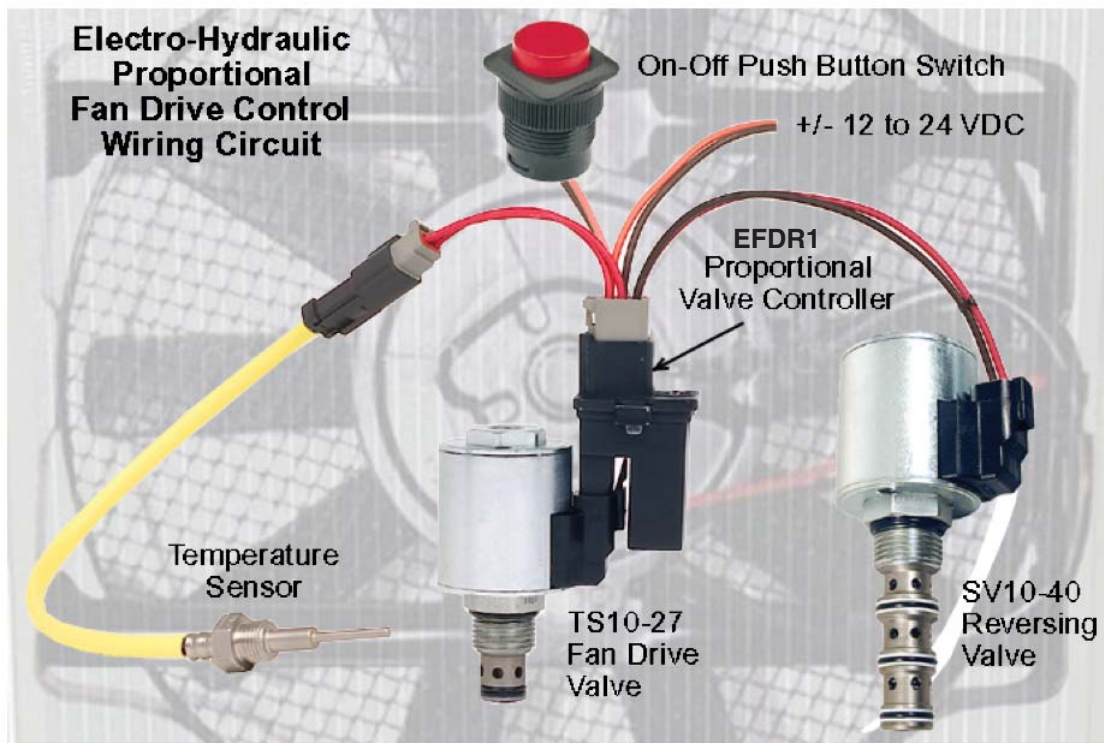
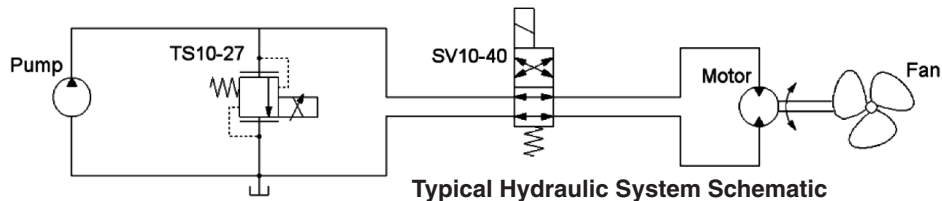
••••• **INNOVATION AT WORK FOR YOU** •••••

NEW Plug-In Style Proportional Valve Driver for Temperature-Activated Electro-Hydraulic Fan Drive Control Applications

HydraForce is pleased to announce the addition of the EFDR1 fan drive controller to our family of plug-in style valve drivers. The EFDR1 offers a low cost, high performance electro-hydraulic fan drive option for vehicles which may benefit from proportional fan control. It is customer-programmable, enabling application-specific performance optimization. Environmentally sealed for protection from both dust and water intrusion, the EFDR1 mounts directly to the Deutsch connector on the valve coil, reducing installation time and complexity.

The EFDR1 is designed for fan drive circuits with a single-input temperature sensor, such as the HydraForce ERT150 (Part No. 4204440), and a TSxx-27 series proportional pressure regulator valve, providing variable fan speed control based on the temperature input. For applications where debris may interfere with radiator air flow, the fan direction can be reversed by connecting an external lead from the EFDR1 controller to a separate solenoid valve for reversing the hydraulic motor direction. Fan performance and reversing functions are set up with a user-friendly PC-based programming/configuration tool.

(continued on next page)



HYDRAFORCE, INC.

500 Barclay Blvd. • Lincolnshire, IL 60069 USA
Ph: 847 793 2300 • Fx: 847 793 0086
Web: www.hydraforce.com • E-Mail: sales@hydraforce.com
ISO 9001 • Member: National Fluid Power Assn.

HYDRAFORCE HYDRAULICS, LTD.

St. Stephens Street • Birmingham B6 4RG England
Ph: 0121 333 1800 • Fx: 0121 333 1810
Web: www.hydraforce.com • E-Mail: sales@hydraforce.com
ISO 9001 & ISO 14001 • Member: British Fluid Power Assn.



NEW Plug-In Style Proportional Valve Driver for Temperature-Activated Electro-Hydraulic Fan Drive Control Applications

EFDR1
Typical
Programming
Screen

Reversing Solenoid Controls and Parameters

Switch: **Press And Hold** Hotshot Current: **2000** mA

Input: **50** Ohms Hotshot Time: **350** ms

Timeout: **2.0** Min Hold Current: **200** mA

- Program Selectable Inputs (PWM, Current, Voltage, Resistance).
- Adjustable and Variable Speed Ramping.
- Automatic Fault Handling for Out-of-Range Signals.
- Hot Shot Reversing Capability.

[go to EFDR1 catalog page](#)

For detailed information and specifications
please see www.hydraforce.com
or contact your HydraForce representative.

HYDRAFORCE, INC.

500 Barclay Blvd. • Lincolnshire, IL 60069 USA
Ph: 847 793 2300 • Fx: 847 793 0086
Web: www.hydraforce.com • E-Mail: sales@hydraforce.com
ISO 9001 • Member: National Fluid Power Assn.

HYDRAFORCE HYDRAULICS, LTD.

St. Stephens Street • Birmingham B6 4RG England
Ph: 0121 333 1800 • Fx: 0121 333 1810
Web: www.hydraforce.com • E-Mail: sales@hydraforce.com
ISO 9001 & ISO 14001 • Member: British Fluid Power Assn.