

••••• **INNOVATION AT WORK FOR YOU** •••••

NEW Versatile, Easy-to-Program Electronic Displays with CAN Interface



ELD06
Compact 2-inch
Round Mono
Display

[Go to ELD06 Catalog page](#)

The ELD06 is a small and versatile monochrome display which features a compact, round enclosure, alphanumeric character display, an 8-bit processor and CAN connectivity. The LED backlight provides for easy use, even in darkness. There are three pushbuttons for entering or modifying data. Three indicator lamps indicate the status of the device connected to the display, and a buzzer is available for alert messages. An operating temperature range of -20°C to +70°C permits its use in diverse environments.

The ELD06 has an outer diameter of only 2.36" (60 mm) making it ideally suited for use in limited space. The display can be attached with clamps or springs in a cutout diameter of only 2.10" (53 mm). A circular 5-pin connector is used for supply voltage and CAN Bus data. Many existing analog display units in dash panels can easily be replaced by the ELD06. The ELD06 is a display with master functionality. The flexible firmware generates recurring and asynchronous CAN messages while the display simultaneously responds to received CAN messages.



ELD07
5-inch Square,
Full-Color Display

[Go to ELD07 Catalog page](#)

The ELD07 is a compact, universal color display module with 5" thin-film transistor display and camera interface. Its compact standard enclosure features a 4mm thick, anti-reflective cutout of glass which effectively protects the display and allows for viewability in direct sunlight. The backlit display and keys enable use in dark ambient conditions. There are eight keys for entering or modifying data. Its operating temperature range of -30° to +65° offers application flexibility.

A circular 12-pin connector allows up to four cameras to be connected to the display. The firmware automatically recognizes PAL and NTSC video sources.



ELD08
5.7-inch Mono
Display

[Go to ELD08 Catalog page](#)

The ELD08 is a monochrome CAN-based display module with a 5.7" high-contrast FSTN screen. Its compact standard enclosure features a 4 mm thick, anti-reflective screen which effectively protects the display. The transfective LCD display ensures excellent viewability, even in direct sunlight, while the backlit display and keys enable use in darkness. There are four keys for entering or modifying data. A temperature range of -20°C to +65°C permits operation in diverse environments.

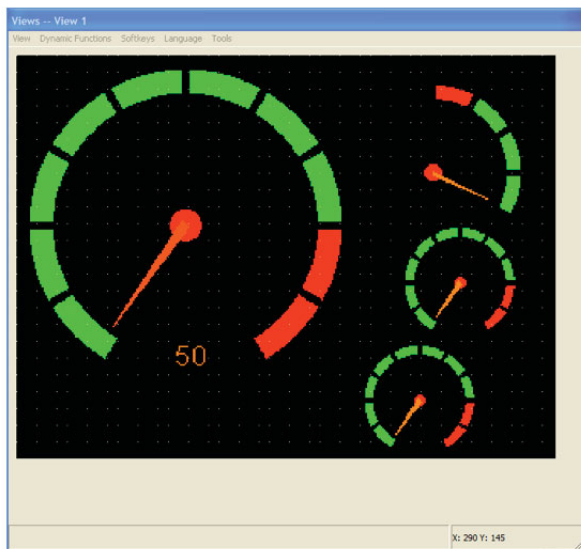
Both the ELD07 and ELD08 displays feature two, circular 5-pin M-12 connectors used to connect to the CAN bus and through which voltage can be supplied. This eliminates the need for an expensive T-connector. The ELD07 and ELD08 displays can function as either a CAN slave or master. The firmware can generate and transmit cyclic and asynchronous CAN messages while the display is capable of responding to up to 130 simultaneous, independent CAN messages. Additional flexibility is provided by your ability to modify the display's parameter settings during operation. An "open C interface" allows a customer familiar with C programming to extend the firmware by implementing their own control algorithms.

All three displays feature CE rating, IP67 weather protection, and a wide input power supply range of 9V to 60V with operating voltages of 12V, 24V or 48V, making them suitable for most common mobile and industrial applications. These displays replace our older model ELD02, and ELD05 Displays and Analog Gauge System.

continued on next page

NEW Versatile, Easy-to-Program Electronic Displays with CAN Interface

HydraForce Display Configurator Software

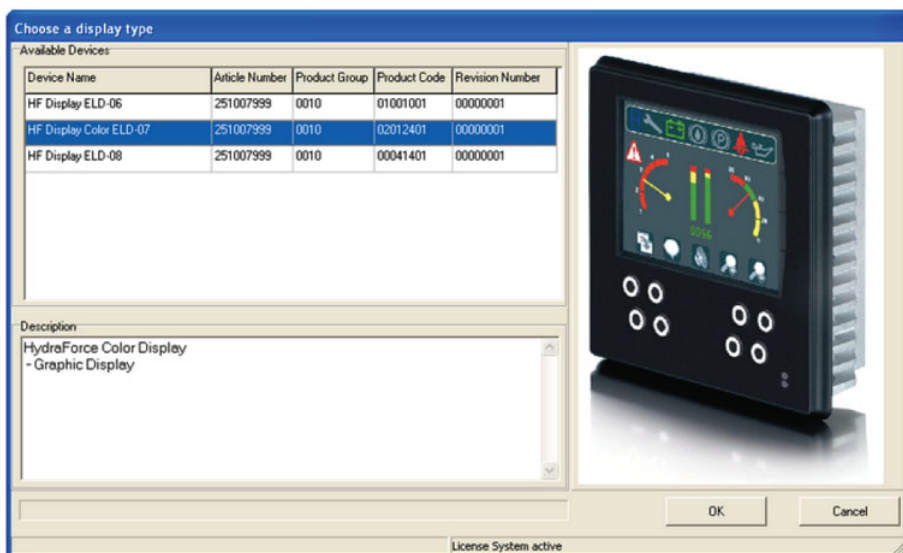


The display and key functions of the ELD06, ELD07 and ELD08 displays are easily programmed with the Display Configurator software tool. Using this software, the user interface of the display can easily be designed on the PC by someone with little or no programming knowledge. The arrangement of display screens and the mapping of important functions to softkeys all take place by the click of a mouse. All program work is displayed on the PC screen in real-time before you upload the file to the display.

Interactive screen view and menus can easily be created, arranged and separated into sub-menus. Views and menus can be password protected so they are only accessible to the proper personnel. Every screen view can be freely designed using text elements, bitmaps, bar diagrams, pointer instruments, animations, geometric figures, and numeric representations. The tool facilitates graphics with 8-bit color depth (ELD06 and ELD08), and up to 256 bits of color, and the ability to superimpose video clips with 18-bit of color depth when using the ELD07 Display. Further, every button can be assigned a separate softkey per screen view so that every screen can have its own unique functions.

The ELD Font Maker is an integral part of the ELD Display Configurator and allows for the selection and modification of virtually any font on the ELD display screen. The Font Maker tool offers the ability to easily create multilingual applications, and supports both ACII and Unicode.

The HydraForce USB Adapter included in the configuration kit allows you to quickly connect your display to your PC and begin programming. Additionally, the configuration kit includes all necessary software, a termination resistor and USB configuration cable. One software license is included with the purchase of a configuration kit. There is no annual maintenance fee.



HydraForce is dedicated to innovation, quality and superior products and technical support in order to provide our customers with the most competitive high-performance system solutions in the industry. Please visit www.hydraforce.com for additional product information, or contact your HydraForce representative for assistance.

The entire content of this document is copyright 2010 HydraForce Inc. All rights reserved.
HydraForce and the HydraForce logo are registered trademarks of HydraForce Inc.

HYDRAFORCE, INC.

500 Barclay Blvd. • Lincolnshire, IL 60069 USA
Ph: 847 793 2300 • Fx: 847 793 0086
Web: www.hydraforce.com • E-Mail: sales@hydraforce.com
ISO 9001 • Member: National Fluid Power Association.

HYDRAFORCE HYDRAULICS, LTD.

St. Stephens Street • Birmingham B6 4RG England
Ph: 0121 333 1800 • Fx: 0121 333 1810
Web: www.hydraforce.com • E-Mail: sales@hydraforce.com
ISO 9001 & ISO 14001 • Member: British Fluid Power Association