



••••• **INNOVATION AT WORK FOR YOU** •••••

## New EP20-S39 Eliminates Leakage Problems in spool-type selectors and logic elements

HydraForce is introducing another innovative product that should help reduce cost in high-flow double-blocking applications. Utilizing the EP20-S39 in conjunction with a small pilot solenoid valve, you can create either high-flow double-blocking circuits or selector circuits.

Other spool-type selectors and logic elements may have leakage issues, such as pilot signals draining during transition — these problems are eliminated using the new EP20-S39. Most logic circuits today use a ball shuttle to control the pilot signal. This has inherent safety issues if the ball moves to allow the pilot signal to escape. HydraForce's integral two-check system prevents this leakage issue, thus maintaining the pilot signal regardless of the transition or the work-port pressure changes. Because the EP20-S39 is a vent-to-open valve, the pilot signal remains trapped, keeping the valve closed until you want it to be vented.

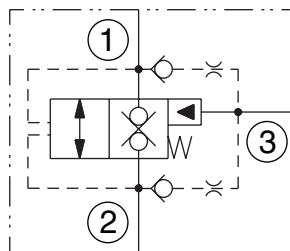
The EP20-S39 is rated to 75 gpm (284 lpm) at 3500 psi (241 bar) and allows bi-directional flow when in the open position. The pressure drop is low at only 175 psi (12 bar) at 70 gpm (303 lpm).



The standard bias spring is 160 psi (11 bar). If your application requires a different spring bias, call your local HydraForce Regional Manager.

The cavity is the standard VC20-S3 cavity which is used for our other 20-size logic elements, therefore standard stocked housings can be used.

The new EP20-S39 valve is another example of the HydraForce commitment to developing innovative new products that offer better features and improved system performance. HydraForce continues to be the leader in design, manufacturing and applications of hydraulic cartridge valves and electro-hydraulic systems in the mobile equipment OEM markets.



Features	Benefits
Flow rate to 75 gpm (265 lpm) at 3500 psi (240 bar).	Can now downsize the valves to actual application requirements.
Two-way, two positions — double-blocking in one position and allows bidirectional flow in the other position.	Reduce the number of cartridges needed.
Vent-to-open, double-checks on pilot.	Valve will not shift until port 3 is vented. Double-check system improves safety and integrity of the pilot signal.
Standard VC20-S3 cavity.	Standard housing are already released and stocked at HF.
Operating pressure to 3500 psi (240 bar).	Most application pressure ranges are covered.
Cycle tested to 1 million cycles, at full rated flow and pressure.	Long life without wear or decreased performance over time.
All production valves are 100% tested to rated flow and pressure.	Customer confidence that the valves will perform right from the start.
Five-year limited product warranty.	Reduce warranty and return costs as well as confidence that the product will last.

[go to catalog page](#)

### HYDRAFORCE, INC.

500 Barclay Blvd. • Lincolnshire, IL 60069 USA  
 Ph: 847 793 2300 • Fx: 847 793 0086  
 Web: www.hydraforce.com • E-Mail: sales-us@hydraforce.com  
 ISO 9001 & QS 9000 • Member: National Fluid Power Assn.

### HYDRAFORCE HYDRAULICS, LTD.

St. Stephens Street • Birmingham B6 4RG England  
 Ph: 0121 333 1800 • Fx: 0121 333 1810  
 Web: www.hydraforce.com • E-Mail: sales-uk@hydraforce.com  
 ISO 9001 & ISO 14001 • Member: British Fluid Power Assn.