



## ••••• INNOVATION AT WORK FOR YOU •••••

### NEW PC-Programmable Plug-In-Style Controller for Proportional Valves

**O**EMs today continue to look for innovative new technology that will set their equipment apart from their competitors. HydraForce has recently released the first in a series of heavy-duty microprocessor based proportional valve drivers that will help any OEM do just that.

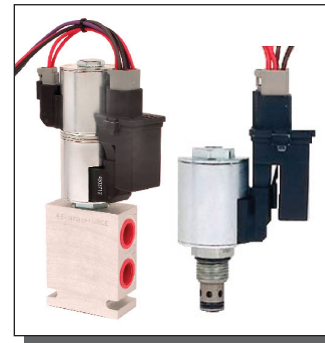
The EVDR1 is a compact, plug-in mounted microprocessor-based controller for use with any HydraForce proportional pressure, flow or directional control valve with coils having the molded-in Deutsch DT04-2P electrical connectors.

All of the following parameters are programmable from the PC-based configuration software. Save the application specific program and "flash" the EVDR1s as needed with virtually unlimited re-writes. Because the parameters are set by the computer and flashed, unwanted field modifications are eliminated, unlike controllers with adjustable potentiometers.

- Select single or dual coil output using a single input signal, which allows for multiple uses with one product.
- I-min & I-max adjustments from the computer allow for precise settings.
- Adjustable Dither from 10 to 300 Hz allows for customized adjustment to improve system stability, responsiveness, operator feel and hysteresis between input and output.
- Non-linear gain between input and output, if needed, to give fine operator control at a given input range. For example, slow minimal speed change for first 75% of input and then a greater rate of change for the last 25% of input.
- Input default level detection allows the machine to fail safe in the event of an "open or short" input condition.



**New EVDR1  
Single or Dual  
Programmable Driver  
for Hydraulic  
Proportional Valves**



- With the choice of input signals, the controller can be used in either mobile or industrial applications.
- Choose from the following standard input signals:  
PWM: 5% to 95% or 1.5V to 3.5V or 100Hz to 10kHz  
Voltage: 0 to 5V or 0 to 10V  
Current: 0 to 20 mA or 4 to 20 mA  
Resistive: 0 to 5K ohms
- Independent ramps from 0 to 5 seconds which allows for application-specific timing of machine performance.
- Output current to 2 amps with full dither capabilities means this driver can be used to control most proportional valves available in the market.

EVDR1 Configuration Software is designed with a user-friendly graphical interface, which means knowledge of codes or other complex assembly languages is not necessary.

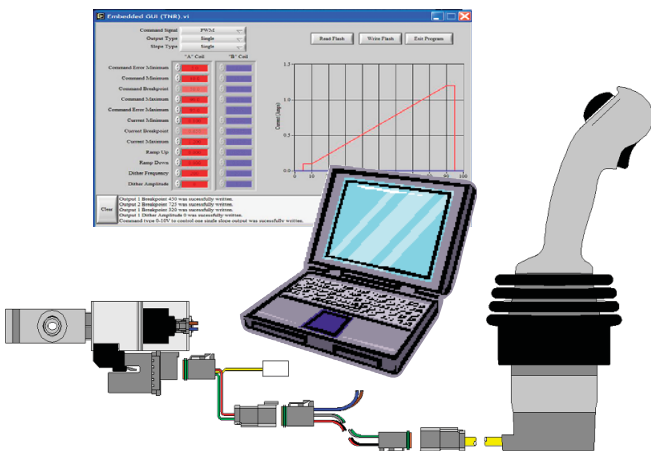
Accepts a wide range of supply voltage which means this driver can be used on a variety of applications. The input voltage does not have to be a regulated power supply.

Weather protection rating of IP67 so it is designed to work in many harsh environments found in mobile applications which provide for a more robust product. Documentation and test reports are available for proof.

The unique integrated package design minimizes wiring and connections which equates to better reliability and reduced cost.

The multi-user configuration software CD is available for a nominal administration fee.

**HydraForce's NEW EVDR1 proportional valve driver is truly one of the most universal drivers available for mobile equipment today. Because of the true universal nature of the EVDR1, why stock any other proportional valve driver?**



### HYDRAFORCE, INC.

500 Barclay Blvd. • Lincolnshire, IL 60069 USA  
Ph: 847 793 2300 • Fx: 847 793 0086  
Web: www.hydraforce.com • E-Mail: sales@hydraforce.com  
ISO 9001 & QS 9000 • Member: National Fluid Power Assn.

### HYDRAFORCE HYDRAULICS, LTD.

St. Stephens Street • Birmingham B6 4RG England  
Ph: 0121 333 1800 • Fx: 0121 333 1810  
Web: www.hydraforce.com • E-Mail: sales@hydraforce.com  
ISO 9001 & ISO 14001 • Member: British Fluid Power Assn.