

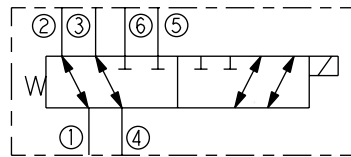


••••• INNOVATION AT WORK FOR YOU •••••

New SV80-61 6-Way Selector Valve Saves Space and Cost

Most hydraulic system designers use one directional control for each function, but what if two functions never operate at the same time? In other words, if the application has two independent, low-flow functions that do not have to be operated simultaneously, there is now a low-cost option available in one cartridge. Our new low-cost, 6-way selector valve for use in "selector" type applications. Using one cartridge to select either of two functions will reduce system complexity, reduce size of a custom manifold, and most importantly, reduce cost. In addition to its application as a selector valve, the SV80-61 is also well-suited for use in low-flow series/parallel circuits.

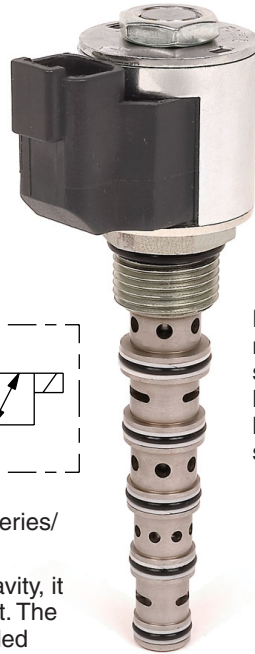
SV80-61 SYMBOL



While the new SV80-61 fits a VC10-6 10-size cavity, it uses the smaller 08-size coil to help reduce cost. The adapter was designed to use our standard molded coils or any of the "E-Series" environmental coils.

Because there is a new standard cavity for this valve, HydraForce has also released the standard aluminum housing with SAE 6 ports, 1/4" and 3/8" BSP ports, and cavity tools. The VC10-6 cavity housing with 6T ports is HF part no. 4553010.

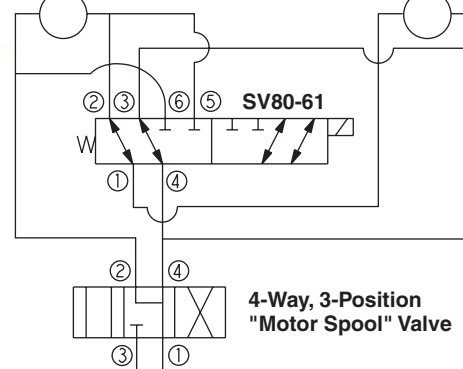
The SV80-61 was created specifically for low-flow secondary circuits such as side shift or tilt functions on low-flow reach



truck applications. With a conservative flow rating of 1.6 gpm/6.1 lpm at 3000 psi/210 bar, there is a maximum 35 psi/2.4 bar pressure drop per flow path. As with most 6-way selector valves, it can operate at higher flows, up to 4 gpm, as long as the spool is not required to shift above rated flow. If your application requires shifting at higher flow, or you suspect higher flows in either energized or de-energized conditions, contact your HydraForce Regional Manager for application review.

The new SV80-61 valve is another example of HydraForce's commitment to developing innovative new products that offer better features and improved system performance. HydraForce continues to be the leader in design, manufacturing and applications of hydraulic cartridge valves and electro-hydraulic systems in the mobile equipment OEM markets.

SERIES / PARALLEL CIRCUIT



Features	Benefits
Flow rate of 1.6 gpm/6.1 lpm at 3000 psi/210 bar.	Can now downsize the valves to actual application requirements.
6-ported selector.	Only one valve required where you would normally need two.
08-size tube used with a 10-size adapter and cage.	Uses the "D" or "E" style 08-size coils to lower cost while maintaining performance.
Ports 3 and 5 to cap end of cylinder, and ports 2 and 6 to rod end of cylinder.	Differential-area cylinder selector applications are not a problem.
Only 35 psi/2.4 bar pressure drop per flow path.	No additional heat issues using this one valve versus two separate valves.
Cycle tested to 2 million cycles — 1 million with port 4 inlet, and 1 million with port 1 inlet at full rated flow and pressure.	Long life without wear or decreased performance over time
All valves are 100% tested to rated flow and pressure.	Customers can be confident that the valves will perform right from the start.
5-year limited product warranty.	Reduce warranty and return costs, as well as assurance of reliability.
Standard housing has been released and stocked.	Can use this cartridge alone or in a custom system.

HYDRAFORCE, INC.

500 Barclay Blvd. • Lincolnshire, IL 60069 USA
 Ph: 847 793 2300 • Fx: 847 793 0086
 Web: www.hydraforce.com • E-Mail: sales-us@hydraforce.com
 ISO 9001 & QS 9000 • Member: National Fluid Power Assn.

HYDRAFORCE HYDRAULICS, LTD.

St. Stephens Street • Birmingham B6 4RG England
 Ph: 0121 333 1800 • Fx: 0121 333 1810
 Web: www.hydraforce.com • E-Mail: sales-uk@hydraforce.com
 ISO 9001 & ISO 14001 • Member: British Fluid Power Assn.