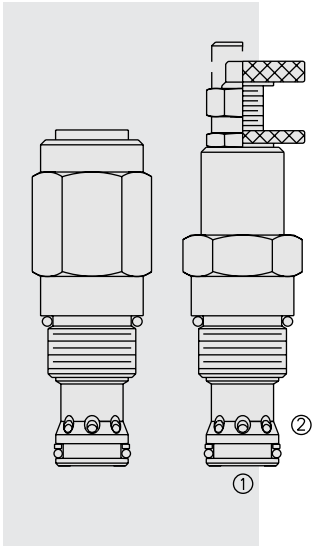


RV52-26 Relief, Pilot-Operated Spool



DESCRIPTION

A screw-in, cartridge-style, pilot-operated (two-stage), spool-type hydraulic relief valve, intended for use as a pressure limiting device in demanding hydraulic circuits which require fast response and low hysteresis.

OPERATION

The RV52-26 blocks flow from ① to ② until sufficient pressure is present at ① to force the piloting relief off its seat, allowing the main (second stage) spool to shift, opening ① to ②.

The cartridge offers smooth transition in response to load changes in demanding hydraulic circuits.

NOTE: The RV52-26 cannot be used in cross-over relief applications.

FEATURES

- Adjustments cannot be backed out of the valve.
- Adjustments prohibit springs from going solid.
- Hardened spool and cage for long life.
- Fast, smooth response to pressure surges.
- Cost effective cavity.

RATINGS

Operating Pressure: 345 bar (5000 psi)

Flow: See Performance Chart

Internal Leakage: 115 cc/minute (7 cu. in/minute) max. to 85% of nominal setting

Crack Pressure Defined: bar (psi) evident at 7.6 lpm (2.0 gpm) attained

Reseat Pressure: Nominal 90% of crack pressure

Standard Spring Range: 83 to 345 bar (1200 to 5000 psi)

Temperature: -40 to 120°C

Filtration: See page 9.010.1

Fluids: Mineral-based or synthetics with lubricating properties at viscosities of 7.4 to 420 cSt (50 to 2000 sus); See Temperature and Oil Viscosity, page 9.060.1

Installation: No restrictions; See page 9.020.1

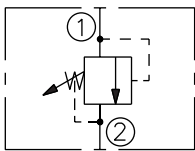
Cavity: VC12-2; See page 9.112.1

Cavity Tool: CT12-2XX; See page 8.600.1

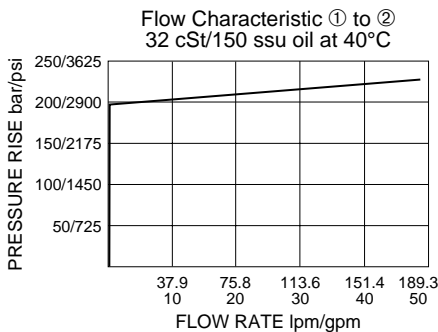
Seal Kit: SK12-2P-B; See page 8.650.1

SYMBOLS

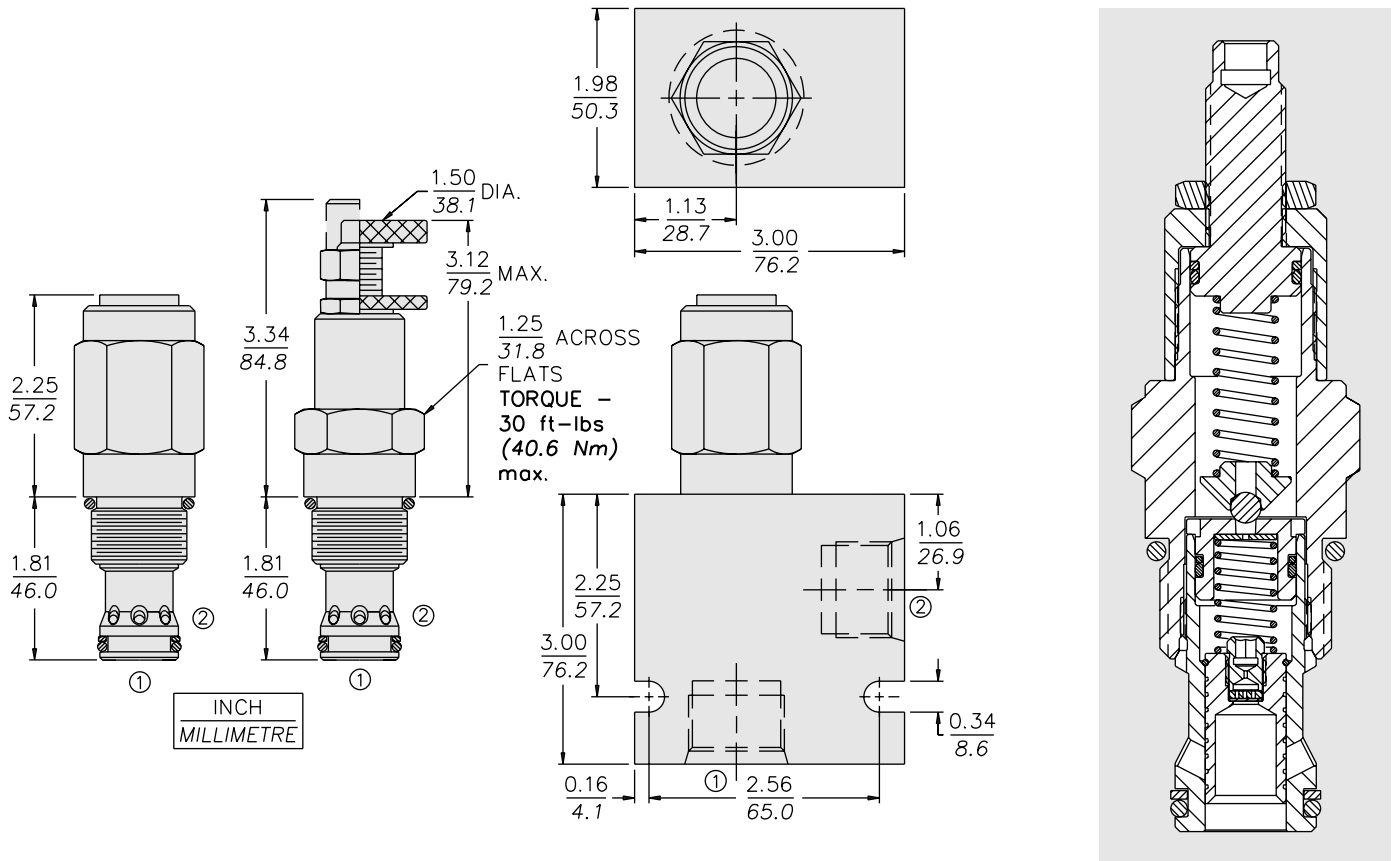
USASI/ISO:



PERFORMANCE (Cartridge Only)



DIMENSIONS



MATERIALS

Cartridge: Weight: 0.34 kg. (0.75 lbs.)
 Steel with hardened work surfaces.
 Zinc-plated exposed surfaces.
 Polyurethane O-rings and back-up standard. Anodized aluminum knobs.

Ported Body: Weight: 1.81 kg. (4.0 lbs.) Ductile Iron (code "D") standard, consult factory for weight, dimensions may differ. Rated to 345 bar (5000 psi); See page 8.012.1

TO ORDER

RV52-26 - P - /

Adjustment Option

- 1/4 in. Hex Allen Head **A**
- 1-1/2 in. Dia. Alum. Knob **B**
- Option A w/ Cover Cap **C**
- Factory Preset Non-Adj. **F**
- Factory Preset Hidden Adjustment **H**
- Option C with Lockwire Holes **L**

Porting

- Cartridge Only **0**
- SAE 16 (Ductile) **16TD**

Seals
 Pressure on **P** Only:
P Polyurethane

Setting in bar[†]

(Blank) for Adjustable, or Specify, for example:

- M83** 83 bar
- M200** 200 bar

Setting in psi[†]

(Blank) for Adjustable, or Specify, for example:

- 12.0** 1200 psi
- 29.0** 2900 psi

Spring Range

50 83 to 345 bar (1200 to 5000 psi)

[†]Adjustable valves will be preset to approx. 50% of spring max. potential.