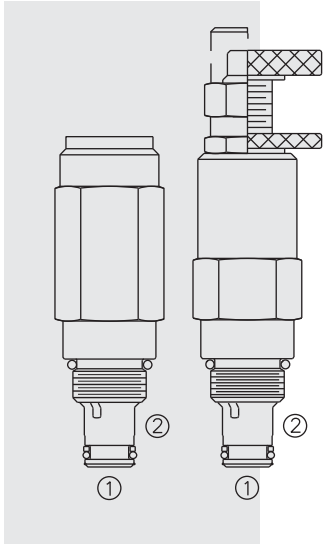


RV08-29 Relief, Direct-Acting Poppet



DESCRIPTION

A screw-in, cartridge-style, direct-acting, poppet-type, hydraulic relief valve intended for stable function in very low flow circuits that control pilot-operated valves.

OPERATION

The **RV08-29** blocks flow from ① to ② until sufficient pressure is present at ① to force the spring-opposed poppet from its seat.

FEATURES

- Adjustments cannot be backed out of the valve.
- Hardened poppet and cage for long life.
- Optional spring ranges to 241 bar (3500 psi).
- Smooth response to pressure surges.
- Industry common cavity.
- Compact size.

RATINGS

Operating Pressure: 241 bar (3500 psi)

Flow: Up to 1.89 lpm (0.5 gpm); see performance curve.

Internal Leakage: 3 ml/minute (0.18 cu. in./minute) max. to 80% of nominal setting

Crack Pressure Defined: bar (psi) evident at 0.95 lpm (0.25 gpm) attained

Reseat Pressure: Nominal 80% of crack pressure

Temperature: -40° to 100°C with standard Buna seals;

-26° to 204°C with Fluorocarbon seals; -54° to 104°C with Polyurethane seals

Filtration: See page 9.010.1

Fluids: Mineral-based or synthetics with lubricating properties at viscosities of 7.4 to 420 cSt (50 to 2000 sus); See Temperature and Oil Viscosity, page 9.060.1

Installation: No restrictions; See page 9.020.1

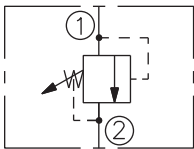
Cavity: VC08-2; See page 9.108.1

Cavity Tool: CT08-2XX; See page 8.600.1

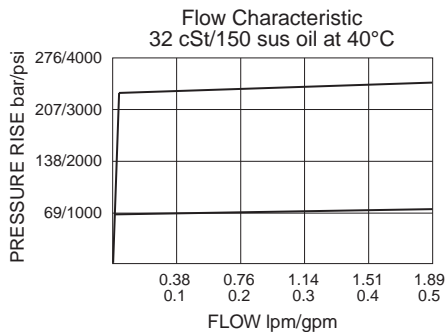
Seal Kit: SK08-2X-B; See page 8.650.1

SYMBOLS

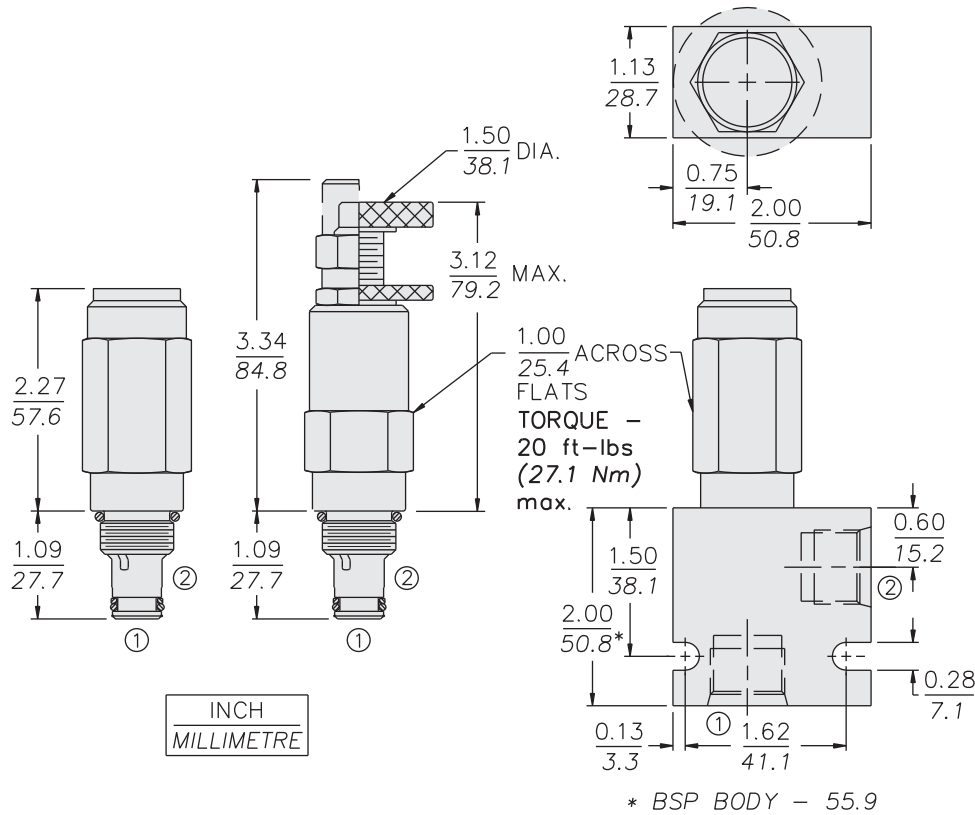
USAS/ISO:



PERFORMANCE (Cartridge Only)



DIMENSIONS



INCH
MILLIMETRE

MATERIALS

Cartridge: Weight: 0.23 kg. (0.50 lbs.)
Steel with hardened work surfaces.
Zinc-plated exposed surfaces.
Buna N O-rings and back-up standard. Anodized aluminum knobs and caps.

Standard Ported Body: Weight: 0.16 kg. (0.35 lbs.); Anodized high-strength 6061 T6 aluminum alloy, rated to 207 bar (3000 psi). Ductile iron bodies available; dimensions may differ. See page 8.008.1

TO ORDER

RV08-29 - - - /

Adjustment Option

- 1/4 in. Hex Allen Head **A**
- 1-1/2 in. Dia. Alum. Knob **B**
- Option A w/ Cover Cap **C**
- Factory Preset Non-Adj. **F**
- Factory Preset Hidden Adj. **H**
- Option C w/ Lockwire Holes **L**

Porting

- Cartridge Only **0**
- SAE 4 **4T**
- SAE 6 **6T**
- 1/4 in. BSP* **2B**
- 3/8 in. BSP* **3B**
- 1/2 in. BSP* **4B**

Seals

- N** Buna N (Std.)
- V** Fluorocarbon
- P** Polyurethane

Setting in bar†

(Blank) for Adjustable, or Specify, for example: **M185** 185 bar

Setting in psi†

(Blank) for Adjustable, or Specify, for example: **30.0** 3000 psi

Adjustment Range

35 69 to 241 bar (1000 to 3500 psi)

†Adjustable valves will be preset to approx. 50% of spring max. potential.

*BSP Body; U.K. Mfr. Only