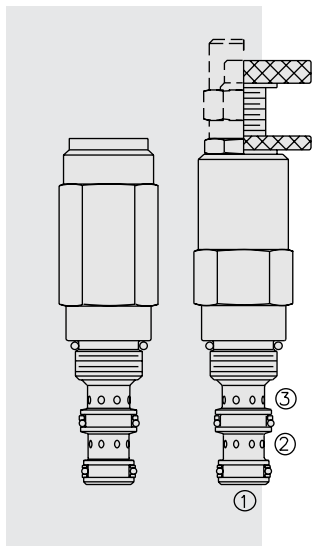


# PR08-32 Pressure Reducing/Relieving



## DESCRIPTION

A screw-in, cartridge-style, direct-acting, spool-type, hydraulic pressure reducing/relieving valve with internal pilot and internal spring chamber drain, designed to act as a pressure-regulating device for secondary circuits. It is intended for use in stable input flow circuits.

## OPERATION

In its steady state, the **PR08-32** allows flow to pass bidirectionally from ② to ①, with the spring chamber constantly drained at ③.

On attainment of a pre-determined pressure at ①, the cartridge shifts to block flow at ②, thereby regulating pressure at ①. In this mode, the valve also will relieve ① to ③ at a variable value over the set reducing pressure.

**Note:** Direct-acting PR series valves may not be suitable for some static load applications. Consult factory.

## FEATURES

- Adjustments cannot be backed out of the valve.
- Adjustments prohibit springs from going solid.
- Optional spring ranges to 152 bar (2200 psi).
- Hardened spool and cage for long life.
- Industry common cavity.
- Compact size.

## RATINGS

**Operating Pressure:** 240 bar (3500 psi)

**Proof Pressure:** 390 bar (5700 psi)

**Flow:** 11.4 lpm (3 gpm) max.

**Internal Leakage ② to ③:** 82 cc/minute (5 cu. in/minute) max. at 207 bar (3000 psi) to 90% of nominal setting

### Standard Spring Ranges (Reducing Function):

- 3.4 to 20.7 bar (50 to 300 psi);
- 10.4 to 41.4 bar (150 to 600 psi);
- 20.7 to 82.8 bar (300 to 1200 psi);
- 34.5 to 151.7 bar (500 to 2200 psi)

**Temperature:** -40 to 120°C with standard Buna seals

**Filtration:** See page 9.010.1

**Fluids:** Mineral-based or synthetics with lubricating properties at viscosities of 7.4 to 420 cSt (50 to 2000 sus); See Temperature and Oil Viscosity, page 9.060.1

**Installation:** No restrictions; See page 9.020.1

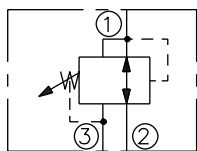
**Cavity:** VC08-3; See page 9.108.1

**Cavity Tool:** CT08-3XX; See page 8.600.1

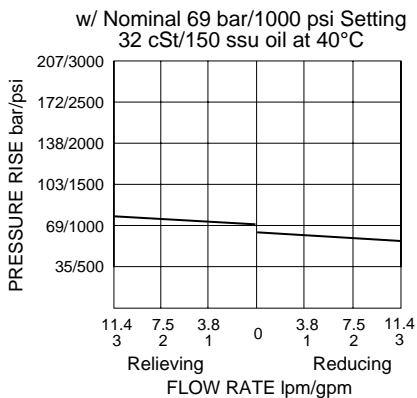
**Seal Kit:** SK08-3X-BM; See page 8.650.1

## SYMBOLS

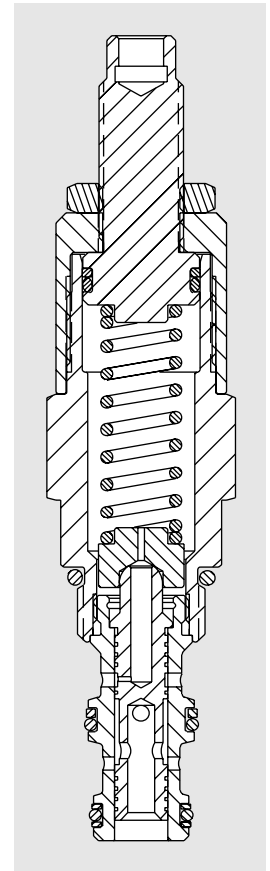
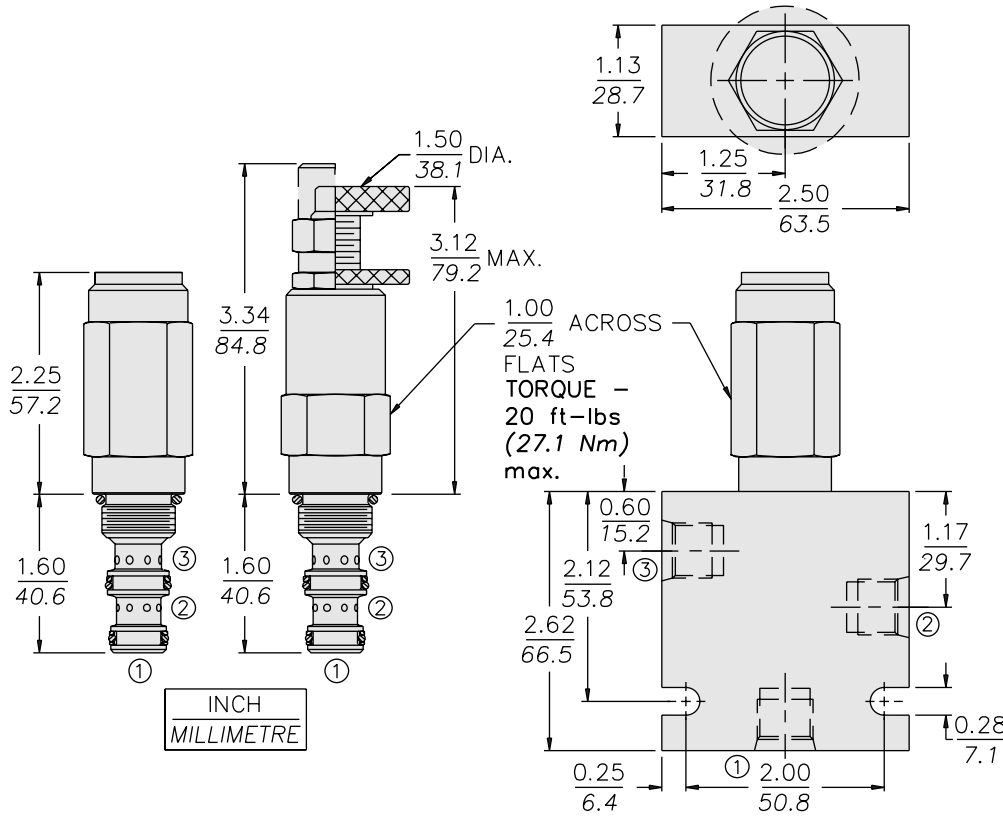
### USASI/ISO:



## PERFORMANCE (Cartridge Only)



**DIMENSIONS**



**MATERIALS**

**Cartridge:** Weight: 0.25 kg. (0.55 lbs.)  
 Steel with hardened work surfaces.  
 Zinc-plated exposed surfaces.  
 Buna N O-rings and back-ups standard. Anodized aluminum knob.

**Standard Ported Body:** Weight: 0.27 kg. (0.60 lbs.) Anodized high-strength 6061 T6 aluminum alloy, rated to 207 bar (3000 psi). Ductile iron bodies available; dimensions may differ. See page 8.008.1

**TO ORDER**

**PR08-32** - - - /

<p><b>Adjustment Option</b></p> <p>1/4 in. Hex Allen Head <b>A</b>                  1-1/2 in. Dia. Alum. Knobs <b>B</b>                  Option A with Cover Cap <b>C</b>                  Factory Preset Non-Adjst. <b>F</b>                  Factory Preset; Hidden Adjustment <b>H</b>                  Option C w/ Lockwire Holes <b>L</b></p> <p><b>Porting</b></p> <p>Cartridge Only <b>0</b>                  SAE 4 <b>4T</b>                  SAE 6 <b>6T</b>                  1/4 in. BSP* <b>2B</b>                  3/8 in. BSP* <b>3B</b></p>	<p><b>Seals</b></p> <p>Buna N (Std.) <b>N</b>                  Fluorocarbon <b>V</b></p>	<p><b>Setting in bar<sup>†</sup></b></p> <p>(Blank) for Adjustable, or Specify, for example:  <b>M25</b> 25 bar  <b>M100</b> 100 bar</p> <p><b>Setting in psi<sup>†</sup></b></p> <p>(Blank) for Adjustable, or Specify, for example:  <b>9.0</b> 900 psi  <b>21.0</b> 2100 psi</p> <p><b>Spring Range</b></p> <p><b>3</b> 3.4 to 20.7 bar (50 to 300 psi)  <b>6</b> 10.4 to 41.4 bar (150 to 600 psi)  <b>12</b> 20.7 to 82.8 bar (300 to 1200 psi)  <b>22</b> 34.5 to 151.7 bar (500 to 2200 psi)</p>
---	--	---

\*BSP Body; U.K. Mfr Only

<sup>†</sup>Adjustable valves will be preset to approx. 50% of spring max. potential.