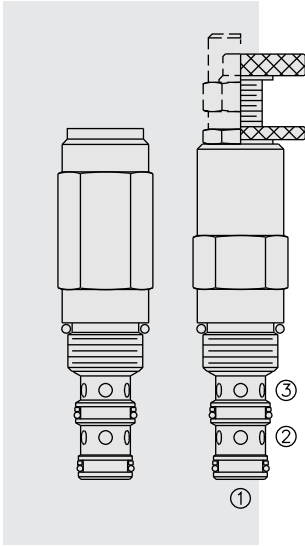


# PS10-36 Pilot-Operated Sequence, Internal Pilot,



## DESCRIPTION

A screw-in, cartridge-style, pilot-operated, spool-type, hydraulic sequence valve with internal pilot and external spring chamber drain.

## OPERATION

In its steady state, the **PS10-36** blocks flow from ① to ②, with the spring chamber drained at ③.  
On attainment of a predetermined pressure at ①, the cartridge shifts to open ① to ②.  
Note that back-pressure on ③ adds to the spring setting value.

## FEATURES

- Adjustments cannot be backed out of the valve.
- Adjustments prohibit springs from going solid.
- Optional spring ranges to 207 bar (3000 psi).
- Hardened spool and cage for long life.
- Industry common cavity.

## RATINGS

**Operating Pressure:** to 240 bar (3500 psi)

**Sequence Pressure Max.:** to 207 bar (3000 psi)

**Flow:** See Performance Chart

**Internal Leakage:** 82 cc/minute (5 cu. in./minute) max. to 85% of nominal setting

**Pilot Orifice:** Pilot-operated through 0.51 mm (0.02 inch) hole

**Crack Pressure Defined:** bar (psi) evident at 0.95 lpm (0.25 gpm) attained ① to ②

**Standard Spring Ranges:**

5.5 to 27.6 bar (80 to 400 psi)

10.3 to 103.4 bar (150 to 1500 psi)

24.1 to 206.9 bar (350 to 3000 psi)

**Temperature:** -40 to 120°C with standard Buna seals

**Filtration:** See page 9.010.1

**Fluids:** Mineral-based or synthetics with lubricating properties at viscosities of 7.4 to 420 cSt (50 to 2000 sus); See Temperature and Oil Viscosity, page 9.060.1

**Installation:** No restrictions; See page 9.020.1

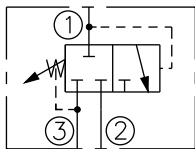
**Cavity:** VC10-3; See page 9.110.1

**Cavity Tool:** CT10-3XX; See page 8.600.1

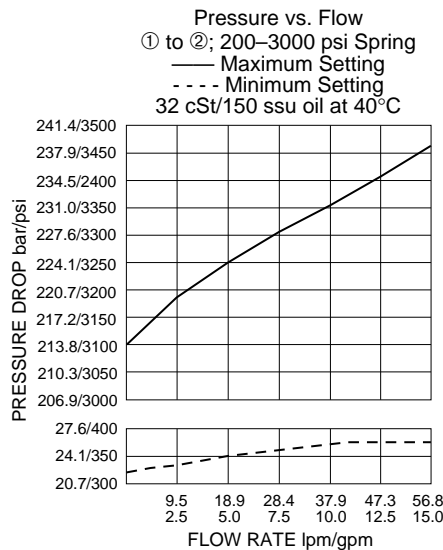
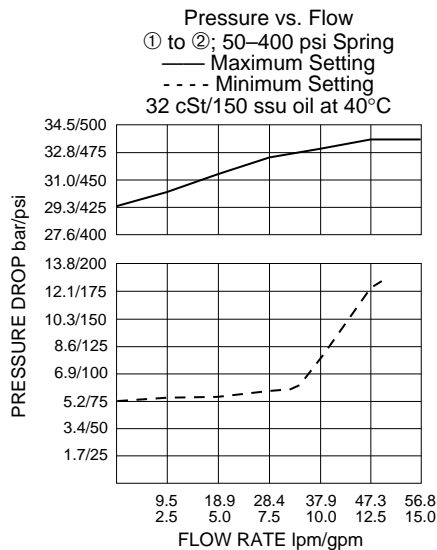
**Seal Kit:** SK10-3X-BM; See page 8.650.1

## SYMBOLS

### USASI/ISO:



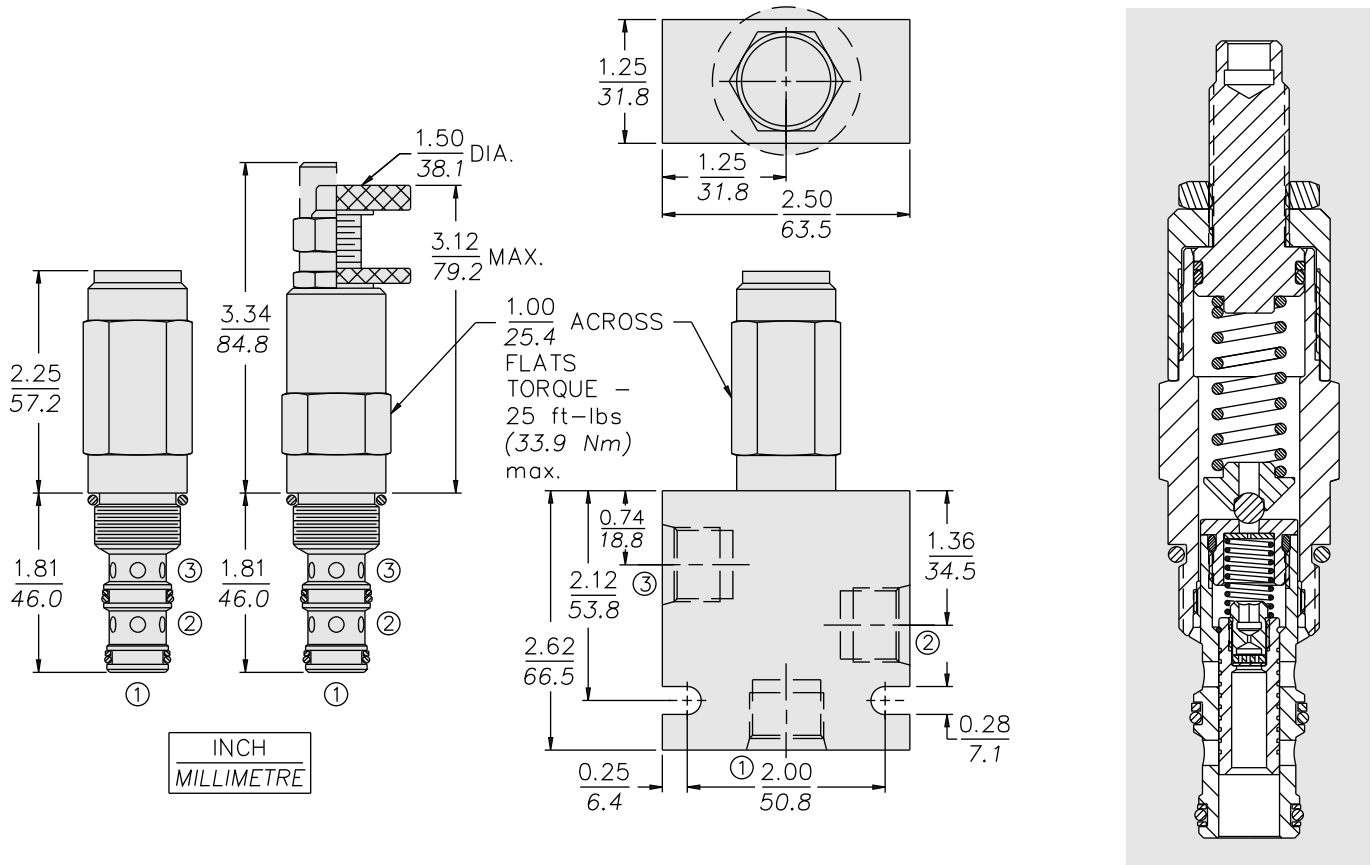
## PERFORMANCE (Cartridge Only)



# External Drain

# PS10-36

## DIMENSIONS



## MATERIALS

**Cartridge:** Weight: 0.27 kg. (0.60 lbs.)  
 Steel with hardened work surfaces.  
 Zinc-plated exposed surfaces.  
 Buna N O-rings and polyester elastomer back-ups standard.  
 Anodized aluminum knobs and caps.

**Standard Ported Body:** Weight: 0.36 kg. (0.80 lbs.); Anodized high-strength 6061 T6 aluminum alloy, rated to 207 bar (3000 psi)  
 Ductile iron bodies available; dimensions may differ.  
 See page 8.010.1.

## TO ORDER

**PS10-36** - - - /

<p><b>Adjustment Option</b></p> <p>1/4 in. Hex Allen Head <b>A</b>              1-1/2 in. Dia. Alum Knob <b>B</b>              Option A w/Cover Cap <b>C</b>              Factory Preset Non-Adjst. <b>F</b>              Factory Preset Hidden Adjustment <b>H</b>              Option C w/Lockwire Holes <b>L</b></p>	<p><b>Porting</b></p> <p>Cartridge Only <b>0</b>              SAE 6 <b>6T</b>              SAE 8 <b>8T</b>              1/4 in. BSP* <b>2B</b>              3/8 in. BSP* <b>3B</b></p>	<p><b>Seals</b></p> <p>Buna N (Std.) <b>N</b>              Fluorocarbon <b>V</b></p>	<p><b>Setting in bar<sup>†</sup></b></p> <p>(Blank) for Adjustable, or Specify, for example:  <b>M25</b> 25 bar  <b>M100</b> 100 bar</p> <p><b>Setting in psi<sup>†</sup></b></p> <p>(Blank) for Adjustable, or Specify, for example:  <b>9.0</b> 900 psi  <b>21.0</b> 2100 psi</p>	<p><b>Spring Range</b></p> <p><b>04</b> 5.5 to 27.6 bar (80 to 400 psi)  <b>15</b> 10.3 to 103.4 bar (150 to 1500 psi)  <b>30</b> 24.1 to 206.9 bar (350 to 3000 psi)</p>
---	--	--	---	---

\*BSP Body; U.K. Mfr. Only

<sup>†</sup>Adjustable valves will be preset to approx. 50% of spring max. potential.