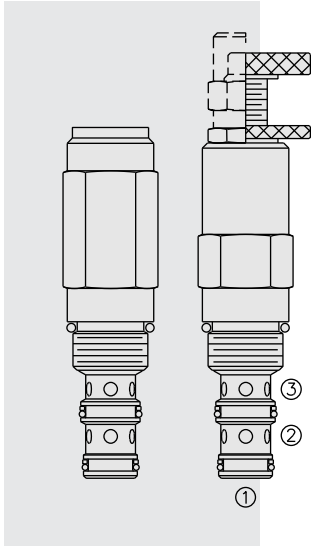


# PS50-36 Pilot-Operated Sequence, Internal Pilot,



## DESCRIPTION

A screw-in, cartridge-style, direct-acting, spool-type, hydraulic sequence valve with internal pilot and spring chamber drain.

## OPERATION

In its steady state, the **PS50-36** blocks flow from ① to ②, with the spring chamber drained at ③.

On attainment of a predetermined pressure at ①, the cartridge shifts to open ① to ②. Note that back-pressure on ③ adds to the spring setting value.

## FEATURES

- Adjustments cannot be backed out of the valve.
- Adjustments prohibit springs from going solid.
- Spring range to 331 bar (4800 psi).
- Hardened spool and cage for long life.
- Industry common cavity.

## RATINGS

**Operating Pressure:** 331 bar (4800 psi) on ports ① and ②;  
240 bar (3500 psi) on port ③

**Sequence Pressure Max.:** 331 bar (4800 psi)

**Flow:** See Performance Chart

**Internal Leakage:** 82 cc/minute (5 cu. in./minute) max. to 85% of nominal setting

**Pilot Orifice:** Pilot-operated through 0.51 mm (0.20 inch) hole

**Crack Pressure Defined:** bar (psi) evident at 0.95 lpm (0.25 gpm) attained ① to ②

**Standard Spring Range:** 27.6 to 331 bar (400 to 4800 psi)

**Temperature:** -40 to 120°C with standard Buna seals

**Filtration:** See page 9.010.1

**Fluids:** Mineral-based or synthetics with lubricating properties at viscosities of 7.4 to 420 cSt (50 to 2000 sus); See Temperature and Oil Viscosity, page 9.060.1

**Installation:** No restrictions; See page 9.020.1

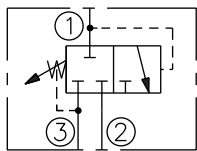
**Cavity:** VC10-3; See page 9.110.1

**Cavity Tool:** CT10-3XX; See page 8.600.1

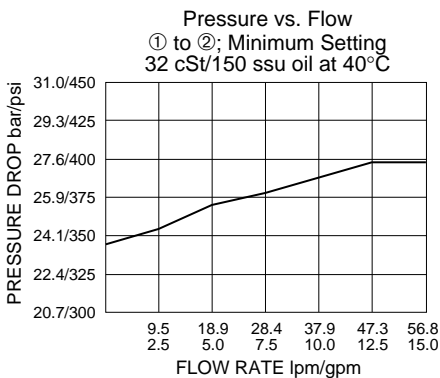
**Seal Kit:** SK10-3P-BM; See page 8.650.1

## SYMBOLS

### USASI/ISO:



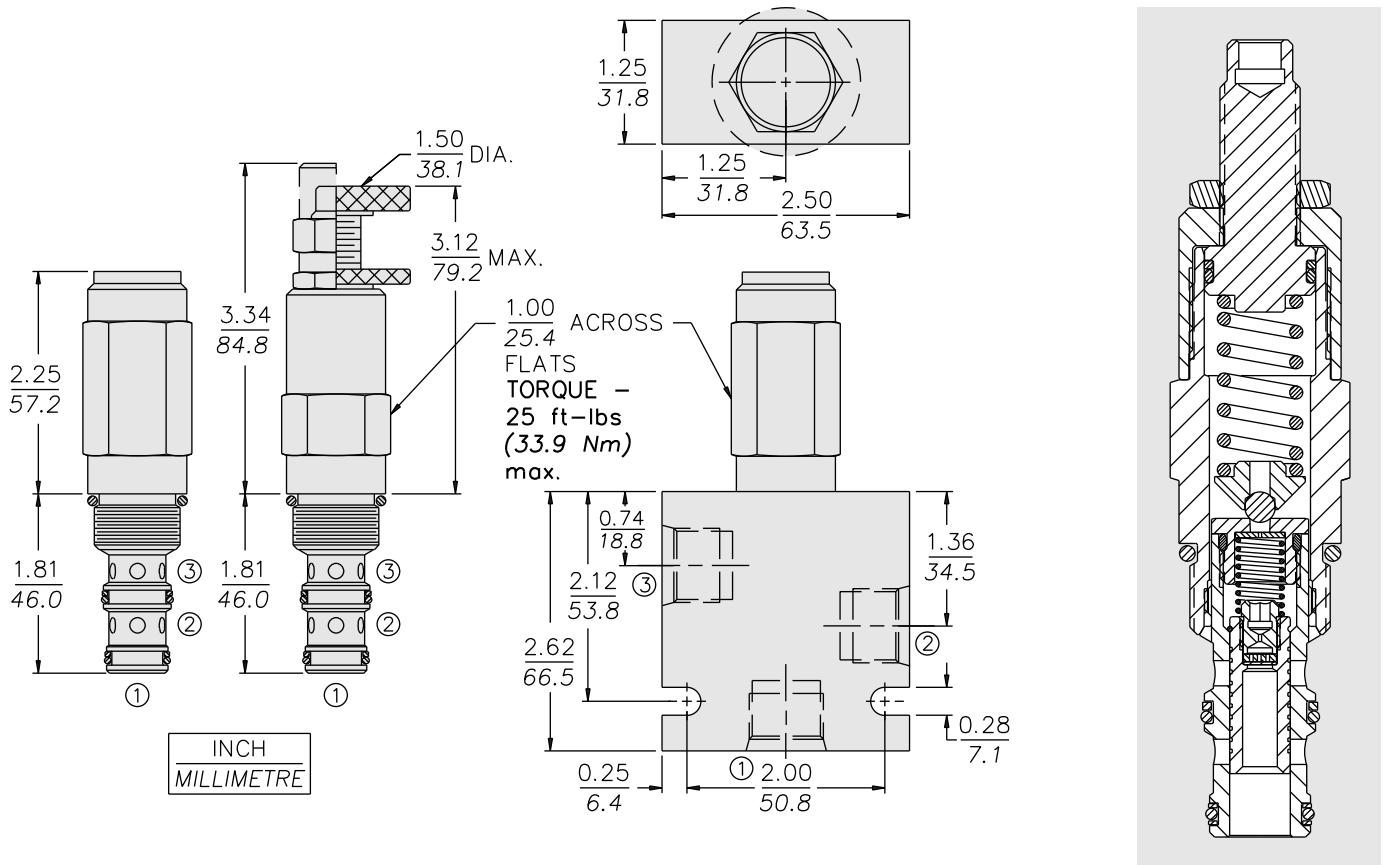
## PERFORMANCE (Cartridge Only)



# External Drain

PS50-36

## DIMENSIONS



## MATERIALS

**Cartridge:** Weight: 0.27 kg. (0.60 lbs.)  
Steel with hardened work surfaces.  
Zinc-plated exposed surfaces.  
Polyurethane O-rings and polyester elastomer back-ups standard. Anodized aluminum knobs and caps.

**Ported Body:** Weight: 0.64 kg. (1.41 lbs.) Ductile Iron (code "D") standard, consult factory for weight, dimensions may differ. Rated to 345 bar (5000 psi). See page 8.010.1.

## TO ORDER

<b>PS50-36</b>		-	-	-	/	
<b>Adjustment Option</b>						
1/4 in. Hex Allen Head	<b>A</b>					
1-1/2 in. Dia. Alum Knob	<b>B</b>					
Option A w/Cover Cap	<b>C</b>					
Factory Preset Non-Adjst	<b>F</b>					
Factory Preset Hidden Adjustment	<b>H</b>					
Option C w/Lockwire Holes	<b>L</b>					
<b>Porting</b>						
Cartridge Only	<b>0</b>					
SAE 6 (Ductile)	<b>6TD</b>					
<b>Seals</b>						
Polyurethane	<b>P</b>					
<b>Setting in bar<sup>†</sup></b>						
(Blank)	for Adjustable, or Specify, for example:					
<b>M25</b>	25 bar					
<b>M100</b>	100 bar					
<b>Setting in psi<sup>†</sup></b>						
(Blank)	for Adjustable, or Specify, for example:					
<b>9.0</b>	900 psi					
<b>21.0</b>	2100 psi					
<b>Spring Range</b>						
<b>50</b>	27.6 to 331 bar (400 to 4800 psi)					

<sup>†</sup>Adjustable valves will be preset to approx. 50% of spring max. potential.