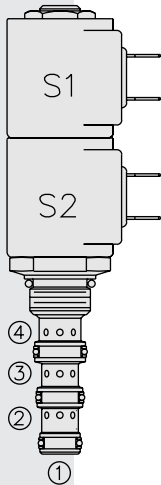


# ELECTRO-PROPORTIONAL VALVES—DIRECTIONAL CONTROL

## SP08-47C Spool, 4-Way, 3-Position, Closed Center



### DESCRIPTION

A proportional solenoid-operated, four-way, three-position, spool-type, closed center, screw-in hydraulic cartridge valve.

### OPERATION

When de-energized, the **SP08-47C** blocks flow to all ports. When coil S1 is energized, flow is allowed from ③ to ④, and from ② to ①. When coil S2 is energized, flow is allowed from ③ to ②, and from ④ to ①.

Initial meter-in flow begins at a nominal 0.4 amp on a 12 VDC system. Full flow of 3 gpm occurs at 1.0 to 1.1 amp on a 12 VDC system. Each coil has its own metering characteristics, which are quite similar (see performance chart).

While port ① may be fully pressurized, it is not intended for use as the valve's inlet.

In circuits where work port flows are unequal due to cylinder ratios, the higher return flow should be directed to port ②.

### FEATURES

- Continuous-duty rated solenoids.
- Efficient wet-armature construction.
- Optional coil voltages and terminations.
- Hardened precision spool and cage for long life.
- Cartridges are voltage interchangeable.
- Optional waterproof E-Coils rated up to IP69K.
- Designed for good linearity and hysteresis.
- Optional manual override.
- Industry-common cavity.

### RATINGS

**Operating Pressure:** 240 bar (3500 psi)

**Flow:** 11.4 lpm (3 gpm) max. (see performance chart); Flow rate is based on 50% duty cycle and coil temperature of 20°C (140°F). Consult factory if higher duty cycle and coil temperatures are anticipated.

**Internal Leakage:** 164 cc/minute (10 cu. in./minute) max. per side at 207 bar (3000 psi)

**Hysteresis:** Less than 7%

**Temperature:** -40 to 120°C with standard Buna seals

**Coil Duty Rating:** Standard Coils and E-Coils: Continuous up to 115% of nominal voltage

**Filtration:** See page 9.010.1

**Fluids:** Mineral-based or synthetics with lubricating properties at viscosities of 7.4 to 420 cSt (50 to 2000 sus); See Temperature and Oil Viscosity, page 9.060.1

**Installation Recommendation:** When possible, the valve should be mounted below the reservoir oil level. This will maintain oil in the armature preventing trapped air instability. If this is not feasible, mount the valve horizontally for best results. See page 9.020.1

**Cavity:** VC08-4; See page 9.108.1; **Cavity Tool:** CT08-4XX; See page 8.600.1

**Seal Kit:** SK08-4X-MMM; See page 8.650.1

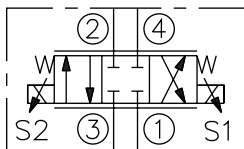
**Coil Nut:** Part No. 7004400; **Manual Override Coil Nut:** Part No. 4528180;

**Coil Spacer:** Part No. 4534720

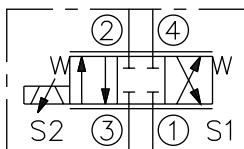
For E-coils manufactured prior to 1-1-04, see page 3.400.1 for coil nut & spacer info.

### SYMBOLS

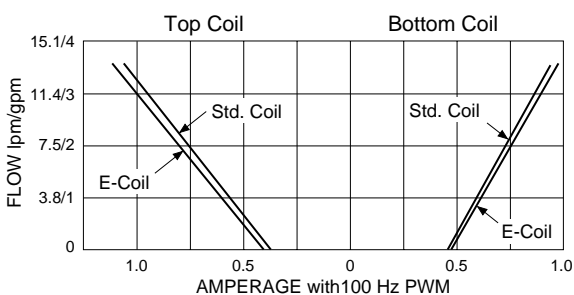
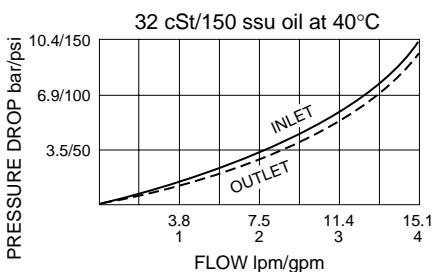
#### USASI:



#### ISO:



### PERFORMANCE (Cartridge Only)

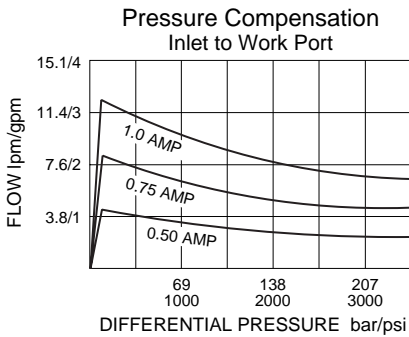


#### Recommended Electronic Controllers:

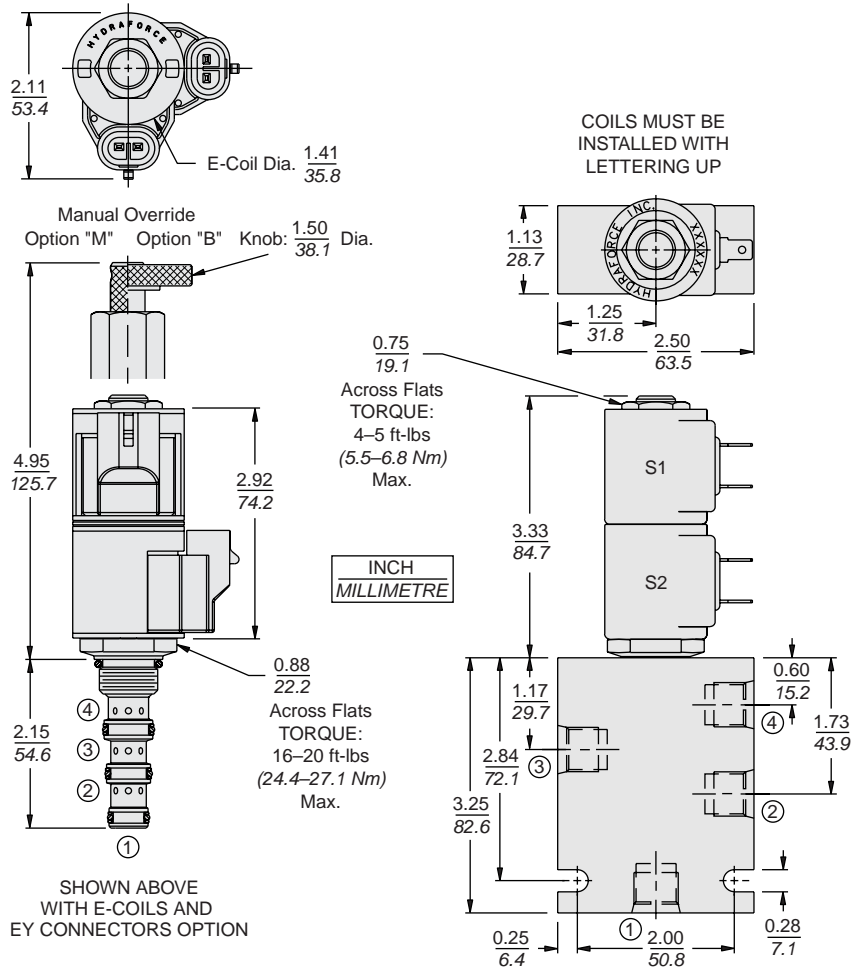
See page 2.001.1 or our Electronics catalog.

Performance information continued on following page.

**PERFORMANCE** (cont'd.)



**DIMENSIONS**



**MATERIALS**

**Cartridge:** Weight: 0.13 kg. (0.28 lbs.)  
Steel with hardened work surfaces.  
Zinc-plated exposed surfaces.  
Buna N O-rings and back-ups std.

**Standard Ported Body:** Weight: 0.18 kg. (0.40 lbs.) Anodized high-strength 6061 T6 aluminum alloy, rated to 207 bar (3000 psi). Ductile iron bodies available; dimensions may differ. See page 8.008.1.

**Standard Coil:** 2 Required. Weight each: 0.11 kg. (0.25 lbs.); Unitized thermoplastic encapsulated, Class H high temperature magnetwire. See page 3.200.1.

**E-Coil:** 2 Required. Weight each: 0.14 kg. (0.3 lbs.); Perfect wound, fully encapsulated with rugged external metal shell; Rated up to IP69K with integral connectors.

**See page 3.400.1 for all E-Coil retrofit applications.**

**TO ORDER**

**SP08-47C** - - - - -

<b>Option</b>	None (Blank)				
Manual Override	<b>B</b>				
Manual Override	<b>M</b>				
<b>Porting</b>					
Cartridge Only	<b>0</b>				
SAE 6	<b>6T</b>				
1/4 in. BSP*	<b>2B</b>				
3/8 in. BSP*	<b>3B</b>				
*BSP Body; U.K. Mfr. Only					
<b>Seals</b>					
Buna N (Std.)	<b>N</b>				
Fluorocarbon	<b>V</b>				
		<b>Voltage</b>			
		Std. Coil			
		<b>0</b> Less Coil**			
		<b>12</b> 12 VDC			
		<b>24</b> 24 VDC			
		**Includes Std. Coil Nut			
		<b>E-Coil</b>			
		<b>12</b> 12 VDC			
		<b>24</b> 24 VDC			
		<b>Termination (VDC)</b>			
		Std. Coil			
		<b>DS</b> Dual Spades			
		<b>DG</b> DIN 43650			
		<b>DL</b> Leadwires (2)			
		<b>DL/W</b> Leads w/Weatherpak® Connectors			
		<b>DR</b> Deutsch DT04-2P			
		<b>Termination (VDC)</b>			
		E-Coil			
		<b>ER</b> Deutsch DT04-2P (IP69K Rated)			
		<b>EY</b> Metri-Pack® 150 (IP69K Rated)			
		Coils with internal diode are available. Consult factory.			