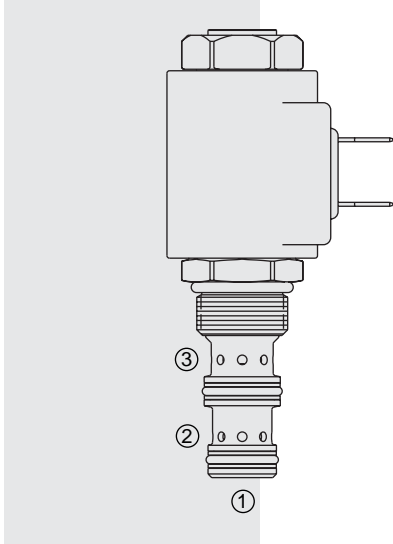


ELECTRO-PROPORTIONAL VALVES—FLOW CONTROLS

PV08-30 Proportional Flow Control Cartridge,



DESCRIPTION

A solenoid-operated, electrically-variable, three-port, pressure-compensated, spool-type, normally closed when de-energized, proportional flow control valve. It can be used as a priority-type flow regulator with pressure-compensated, regulated and bypass flow. It can also be used as a restrictive-type 2-way, pressure-compensated flow regulator when the bypass line (port ②) is blocked.

OPERATION

The **PV08-30** will regulate flow out of port ③ regardless of system working pressure. With an increasing current applied to the solenoid, the PV08-30 will increase output flow.

Note: When used as a bypass flow control in applications where the priority flow port will be blocked by external valving (dead-headed), a small bleed orifice is required at the priority port (port ③). Consult factory.

FEATURES

- Excellent linearity and hysteresis characteristics.
- Hardened spool and cage for long life.
- Optional coil voltages and terminations.
- Efficient wet armature construction.

RATINGS

Operating Pressure: Inlet: 240 bar (3500 psi); Ports ② and ③: 207 bar (3000 psi)

Regulated Flow Rate: Bypass Blocked, Range A: 11.4 lpm (3.0 gpm)
 Bypass Blocked, Range B: 5.7 lpm (1.5 gpm)
 Bypass Open, Range A: 11.4 lpm (3.0 gpm)
 Bypass Open, Range B: 5.7 lpm (1.5 gpm)

Nominal Input Flow: Bypass Open, Range A: 15.2 lpm (4.0 gpm)
 Bypass Open, Range B: 7.6 lpm (2.0 gpm)

Maximum Input Flow: Bypass Open, Range A: 22.8 lpm (6.0 gpm)
 Bypass Open, Range B: 22.8 lpm (6.0 gpm)

Internal Leakage: 100 cc/min. (6 cu. in./min.) fully closed at 207 bar (3000 psi)

Electrical: 2 standard voltage ratings (Uses EHPR Series Coil; See page 3.200.8)

Coil Voltage	Threshold Current	Max. Control Current
12 VDC	400 ± 100 mA	1400 ± 150 mA
24 VDC	200 ± 50 mA	700 ± 75 mA

Filtration: See page 9.010.1

Fluids: Mineral-based or synthetics with lubricating properties at viscosities of 7.4 to 420 cSt (50 to 2000 sus); See Temperature and Oil Viscosity, page 9.060.1

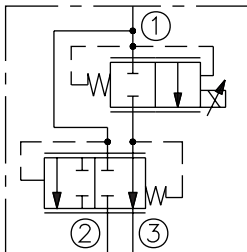
Installation: No restrictions; See page 9.020.1.

Cavity: VC08-3; See page 9.108.1; **Cavity Tool:** CT08-3X-XX; See page 8.600.1

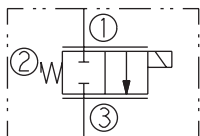
Seal Kit: SK08-3X-MM; See page 8.650.1 for seal kit options and appropriate seals based on application temperature range.

SYMBOLS

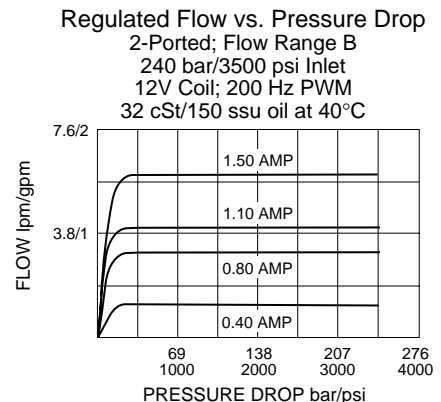
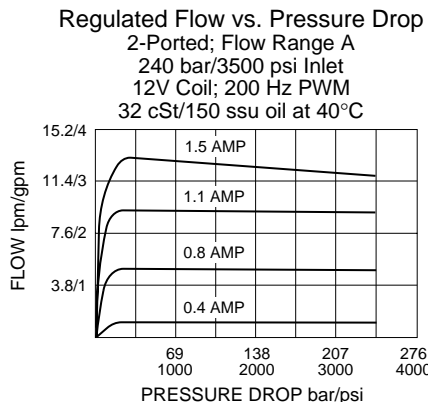
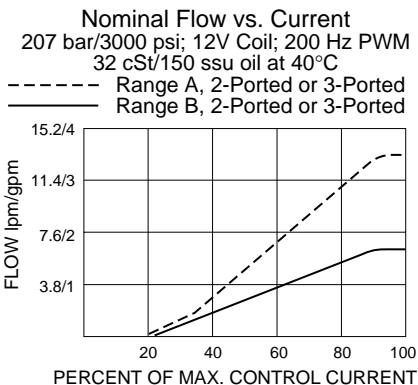
USASI/ISO:



2-Ported:



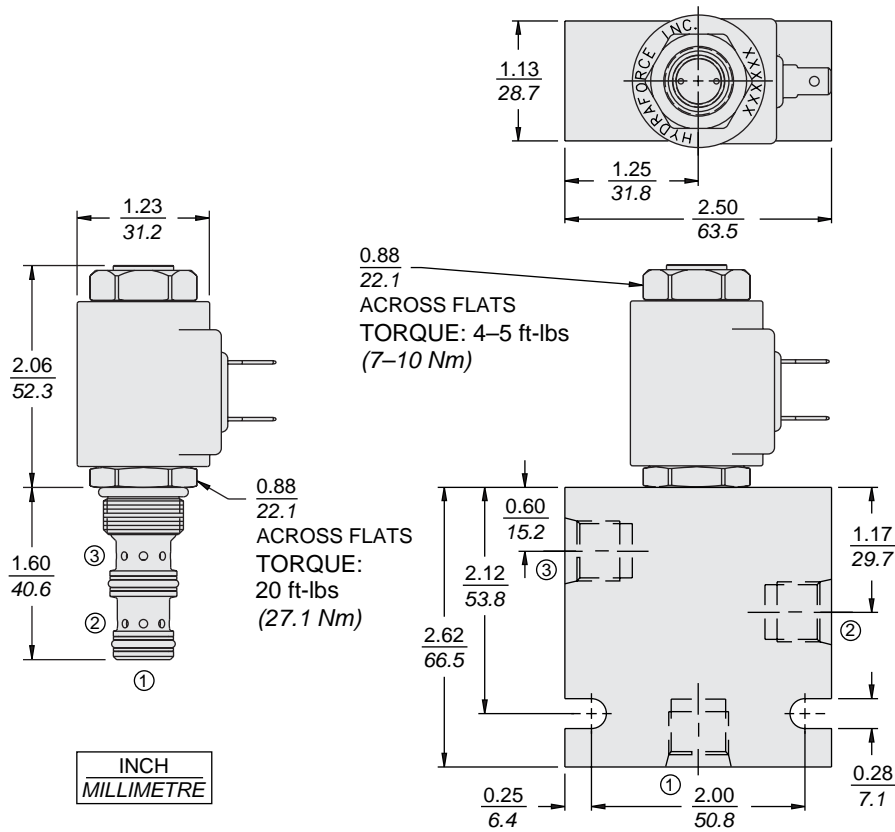
PERFORMANCE



Normally Closed

PV08-30

DIMENSIONS



Recommended Electronic Controllers:
See page 2.001.1 or our Electronics catalog.

MATERIALS

Cartridge: Weight: 0.13 kg. (0.28 lbs.)
Steel with hardened work surfaces.
Zinc-plated exposed surfaces. Buna
N O-rings and polyester elastomer
back-ups standard.

Standard Ported Body: Weight:
0.27 kg. (0.60 lbs.) Anodized high-
strength 6061 T6 aluminum alloy,
rated to 207 bar (3000 psi). Ductile
iron bodies available; dimensions
may differ. See page 8.008.1

EHPR Series Coil: Weight: 0.32 kg.
(0.7 lbs.) Unitized thermoplastic
encapsulated, Class H high
temperature magnet-wire.
See page 3.200.8.

TO ORDER

