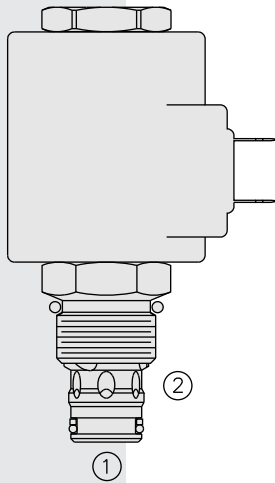


ELECTRO-PROPORTIONAL VALVES—PRESSURE CONTROLS

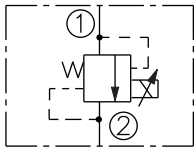
TS10-27 Proportional Electric Relief w/Internally

U.S. Patent
6,267,350



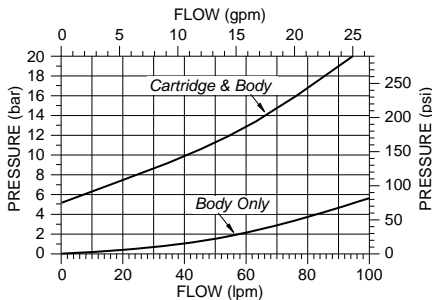
SYMBOLS

USAS/ISO:

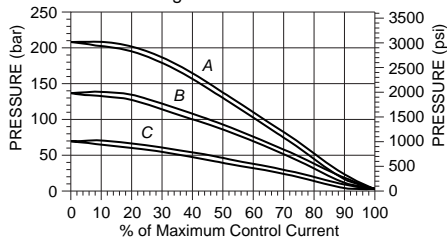


PERFORMANCE

Pressure Drop vs. Flow Characteristic
For Flow ① to ② with Coil Energized



Relief Pressure vs. Current (DC) Characteristic, 200 Hz PWM
Relieving Pressure ① to ②



DESCRIPTION

A screw-in, cartridge-style, pilot-operated, spool-type hydraulic relief valve, which can be infinitely adjusted across a prescribed range using a variable electric input. Pressure output is inversely proportional to DC current input. This valve is intended for use as a pressure limiting device in demanding applications.

OPERATION

The TS10-27 blocks flow from ① to ② until sufficient pressure is present at ① to open the valve by overcoming the preset induced spring force. With no current applied, the valve will relieve at ± 50 psi of the range maximum. Applying current to the coil decreases the induced spring force, thereby reducing the valve setting.

Note: This valve is ideal for hydraulic fan drive applications. Consult factory for electronic controllers specifically designed for fan drive applications.

FEATURES

- 12 and 24 volt coils standard.
- Industry common cavity.
- Optional waterproof E-Coils rated up to IP69K.

RATINGS

Maximum Operating Pressure: 241 bar (3500 psi)

Maximum Control Current: 1.10 amps for 12 VDC coil; 0.55 amps for 24 VDC coil

Relief Pressure Range from Zero to Maximum Control Current:

A: 207–10.3 bar (3000–150 psi)

B: 138–10.3 bar (2000–150 psi)

C: 69–10.3 bar (1000–150 psi)

Rated Flow: 75.7 lpm (20 gpm), $\Delta P=14.8$ bar (215 psi), Cartridge only,
① to ② coil energized

Maximum Pilot Flow: 0.76 lpm (0.2 gpm)

Hysteresis: Less than 3%

Flow Path: Free Flow: ① to ② coil energized; Relieving: ① to ② coil de-energized

Temperature: -40 to 120°C (-40 to 250°F) with standard Buna N seals

Filtration: See page 9.010.1

Fluids: Mineral-based or synthetics with lubricating properties at viscosities of 7.4 to 420 cSt (50 to 2000 sus); See Temperature and Oil Viscosity, page 9.060.1

Installation Recommendation: When possible, the valve should be mounted below the reservoir oil level. This will maintain oil in the armature preventing trapped air instability. If this is not feasible, mount the valve horizontally for best results.

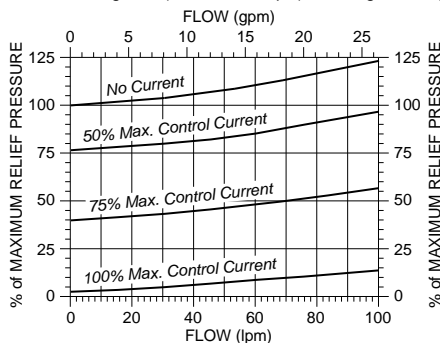
Cavity: VC10-2; See page 9.110.1; **Cavity Tool:** CT10-2XX; See page 8.600.1

Seal Kit: SK10-2X-B; See page 8.650.1

Coil Nut: Part No. 4540550;

For E-coils manufactured prior to 1-1-04, see page 3.400.1 for coil nut info.

Typical Relief Pressure vs. Flow Characteristic
Typical Relieving Pressure ① to ②
at Various %'s of Maximum Control Current
Pressure Range "A" (207 bar/3000 psi); Cartridge in Body



Recommended Electronic Controllers:

Model EFDR2 Multi-Input Fan Drive Controller.

For more information go to:

<http://www.hydraforce.com/Electro/fandrive.htm>
or

Recommended Electronic Controllers

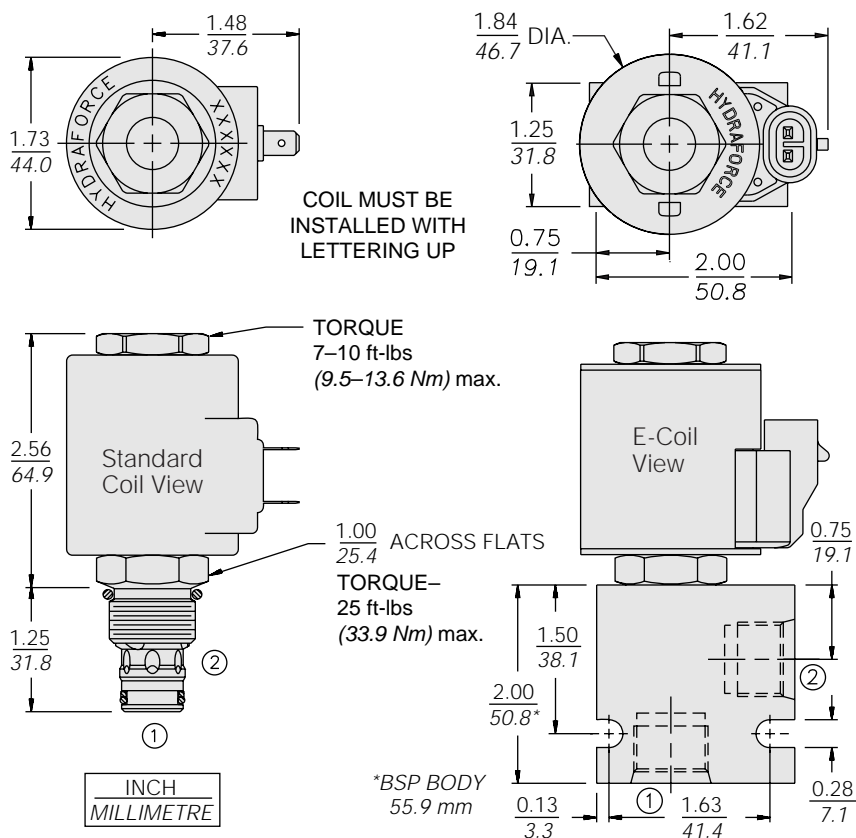
catalog page 2.001.1 (Table 2)

Piloted Spool

TS10-27

DIMENSIONS

U.S. Patent 6,267,350



MATERIALS

Cartridge: Weight: 0.18 kg. (0.4 lbs.) Steel with hardened work surfaces. Zinc-plated exposed surfaces. Buna N O-rings and polyester elastomer back-ups standard. Optional polyurethane seals with fluorocarbon back-up recommended for pressures over 240 bar (3500 psi).

Standard Ported Body: Weight: 0.16 kg. (0.35 lbs.) Anodized high-strength 6061 T6 aluminum alloy, rated to 207 bar (3000 psi). Ductile iron bodies available; dimensions may differ. See page 8.010.1

Standard Coil: Weight: 0.27 kg. (0.6 lbs.) Unitized thermoplastic encapsulated, Class H high temperature magnet-wire. See page 3.200.1

E-Coil: Weight: 0.41 kg. (0.9 lbs.) Fully encapsulated with rugged external metal shell. Rated up to IP69K with integral connectors. **Note: See page 3.400.1 for all E-Coil retrofit applications.**

TO ORDER

TS10-27

Maximum Relief Pressure
207 bar (3000 psi) **A**
138 bar (2000 psi) **B**
69 bar (1000 psi) **C**

Porting
Cartridge Only **0**
SAE 6 **6T**
SAE 8 **8T**
3/8 in. BSP* **3B**
1/2 in. BSP* **4B**

*BSP Body; U.K. Mfr. Only

Seals
Buna N (Std.) **N**
Fluorocarbon **V**

Termination Std. Coil

DS Dual Spades
DG DIN 43650
DL Leadwires (2)
DL/W Leads w/Weatherpak® Connectors
DR Deutsch DT04-2P

Termination E-Coil

ER Deutsch DT04-2P (IP69K Rated)
EY Metri-Pack® 150 (IP69K Rated)

Coils with internal diode are available. Consult factory.

Voltage

0 Less Coil
10 10 VDC (1.30 amps max.)
12 12 VDC (1.10 amps max.)
20 20 VDC (0.65 amps max.)
24 24 VDC (0.55 amps max.)