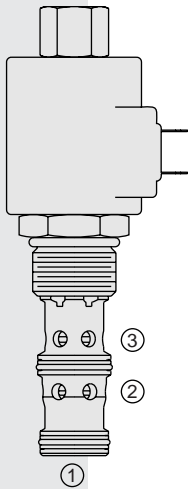


ELECTRO-PROPORTIONAL VALVES—PRESSURE CONTROLS

TS12-36 Proportional Electric Reducing/Relieving

Patent Pending



DESCRIPTION

A screw-in, cartridge-style, pilot-operated, spool-type reducing/relieving valve, which can be infinitely adjusted across a prescribed range using a variable electric input. Pressure output is proportional to DC current input. This valve is intended for use as a pressure limiting device in demanding applications.

OPERATION

The **TS12-36** allows flow from ② to ① until pressure at ① equals the setting determined by the coil current. Port ③ is typically connected to the reservoir. If external load increases the pressure at ① beyond this setting, pressure is relieved by allowing flow from ① to ③. Minimum pressure at ① without any current is 100 psi. If external circuitry allows the pressure at ② to fall below the pressure at ①, the valve will allow free flow from ① to ② regardless of the setting of the valve or the amount of current in the coil.

FEATURES

- 12 and 24 volt coils, standard or optional waterproofed.

RATINGS

Maximum Operating Pressure: Ports ① and ②: 276 bar (4000 psi)

Maximum Tank Pressure: Port ③: 68.9 bar (1000 psi); Note: Tank pressure is additive to regulated pressure.

Reduced Pressure Range from Zero to Maximum Controlled Current:

A: 6.9–207 bar (100–3000 psi); **B:** 6.9–172 bar (100–2500 psi)

C: 6.9–138 bar (100–2000 psi)

Maximum Pilot Flow and Leakage: 0.49 lpm (0.13 gpm) with max. control current and with inlet pressure at 276 bar (4000 psi) at regulated flow of 3.8 lpm (1 gpm).

Flow Path: Free Flow: ① to ③ coil de-energized; Reducing: ② to ① coil energized; Relieving: ① to ③ coil energized

Performance Life: Less than 5% change in the slope of the pressure vs current characteristics over one million cycles.

Hysteresis: Less than 3%.

Temperature: -40 to 120°C (-40 to 250°F) with Buna N seals.

Filtration: See page 9.010.1

Fluids: Mineral-based or synthetics with lubricating properties at viscosities of 7.4 to 420 cSt (50 to 2000 sus); See Temperature and Oil Viscosity, page 9.060.1

Installation Recommendation: When possible, the valve should be mounted below the reservoir oil level. This will maintain oil in the armature preventing trapped air instability. If this is not feasible, mount the valve horizontally for best results.

Cavity: VC12-3; See page 9.110.1; **Cavity Tool:** CT12-3XX; See page 8.600.1

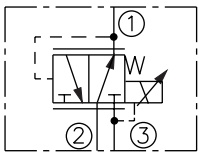
Seal Kit: SK12-3X-BM; See page 8.650.1

Coil Nut: Part No. 4526330;

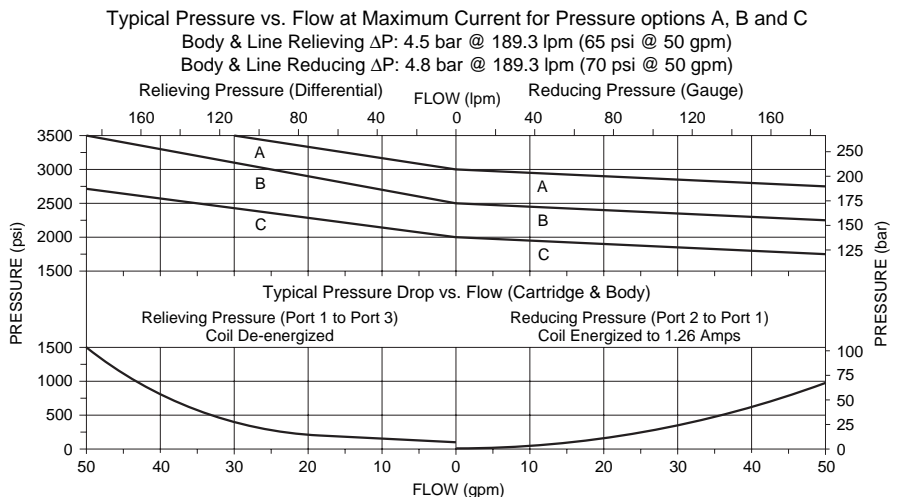
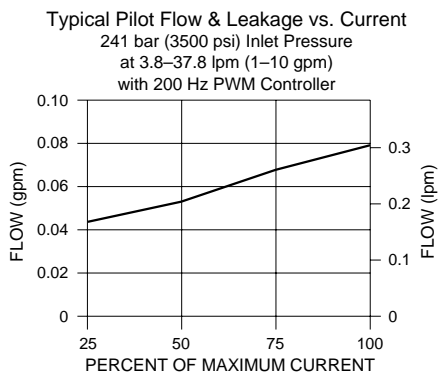
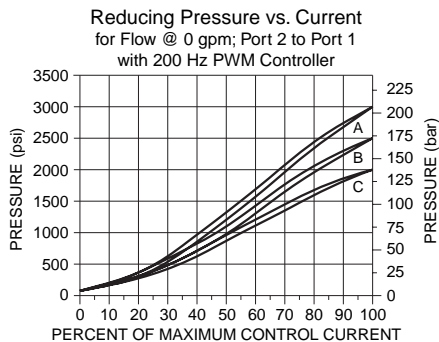
For E-coils manufactured prior to 1-1-04, see page 3.400.1 for coil nut info.

SYMBOLS

USAS/ISO:



PERFORMANCE

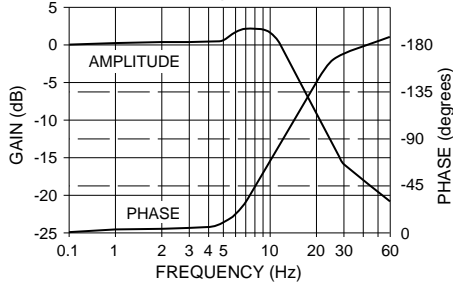


Valve w/Internally Piloted Spool

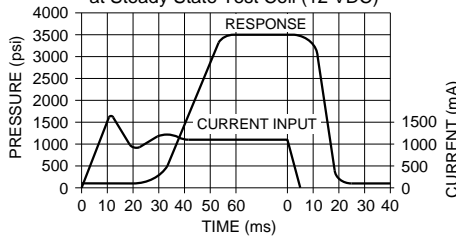
TS12-36

PERFORMANCE (cont'd)

Typical Frequency Response Curves
Flow at 0 gpm; Inlet Pressure at 241 bar (3500 psi)
Pressure Range at 50% ±40%



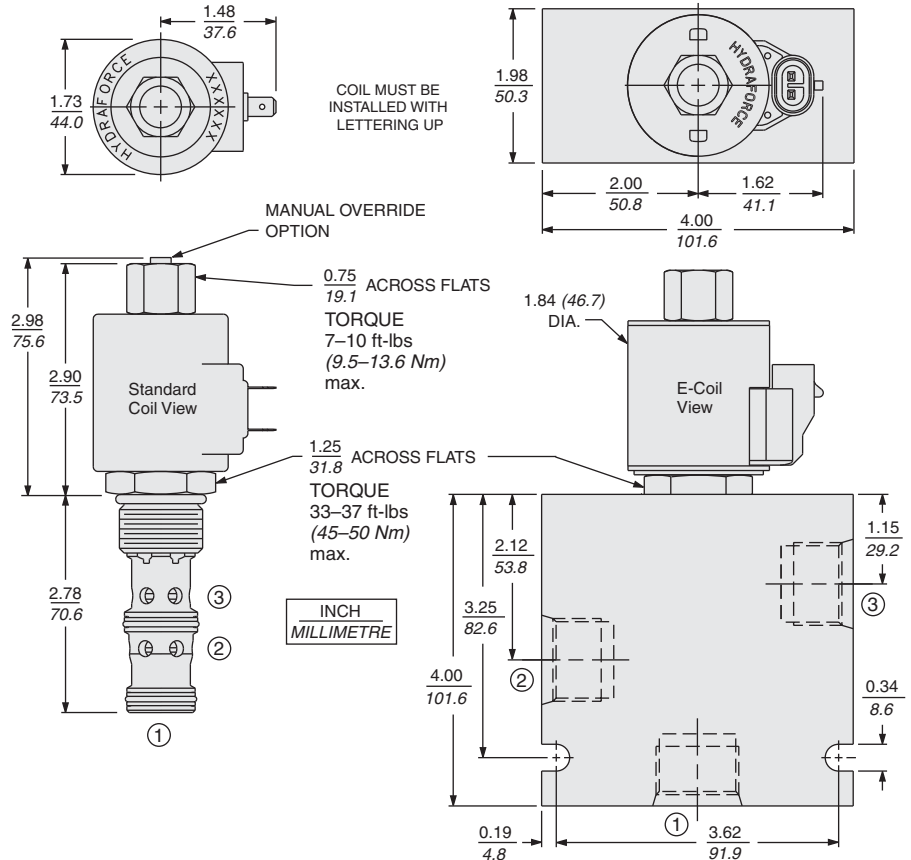
Typical Step Response Curve
Flow at 0 gpm; Inlet Pressure at 241 bar (3500 psi)
Voltage Set to Produce 1.1 amps at Steady State Test Coil (12 VDC)



Recommended Electronic Controllers:
See page 2.001.1 or our Electronics catalog.

DIMENSIONS

Patent Pending



MATERIALS

Cartridge: Weight: 0.30 kg. (0.66 lbs.) Steel with hardened work surfaces. Zinc-plated exposed surfaces. Buna N O-rings and polyester elastomer back-ups standard. Optional polyurethane seals with fluorocarbon back-up recommended for pressures over 240 bar (3500 psi).

Standard Ported Body: Weight: 0.23 kg. (0.50 lbs.); Anodized high-strength 6061 T6 aluminum alloy, rated to 207 bar (3000 psi). Ductile iron bodies available; dimensions may differ; consult factory. See page 8.010.1

Standard Coil: Weight: 0.32 kg. (0.7 lbs.) Unitized thermoplastic encapsulated, Class H high temperature magnet-wire. See page 3.200.1

E-Coil: Weight: 0.41 kg. (0.9 lbs.) Fully encapsulated with rugged external metal shell. Rated up to IP69K with integral connectors. **Note: See page 3.400.1 for all E-Coil retrofit applications.**

TO ORDER

| | | | |
|----------------------------------|--|--|---|
| TS12-36 | | | |
| Maximum Reducing Pressure | | | Termination Std. Coil |
| 207 bar (3000 psi) A | | | DS Dual Spades |
| 172 bar (2500 psi) B | | | DG DIN 43650 |
| 138 bar (2000 psi) C | | | DL Leadwires (2) |
| | | | DL/W Leads w/Weatherpak® Connectors |
| Option | | | DR Deutsch DT04-2P |
| None (Blank) | | | Termination E-Coil |
| Manual Override M | | | ER Deutsch DT04-2P (IP69K Rated) |
| | | | EY Metri-Pack® 150 (IP69K Rated) |
| Porting | | | Coils with internal diode are available. Consult factory. |
| Cartridge Only 0 | | | |
| SAE 8 8T | | | Seals |
| SAE 10 10T | | | N Buna N (Std.) |
| SAE 12 12T | | | V Fluorocarbon |
| 1/2 in. BSP* 4B | | | Voltage |
| 3/4 in. BSP* 6B | | | 0 Less Coil* |
| *BSP Body; U.K. Mfr. Only | | | 12 12 VDC |
| | | | 24 24 VDC |