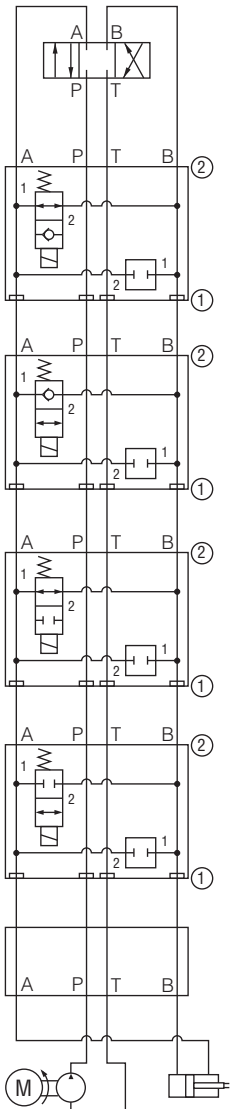
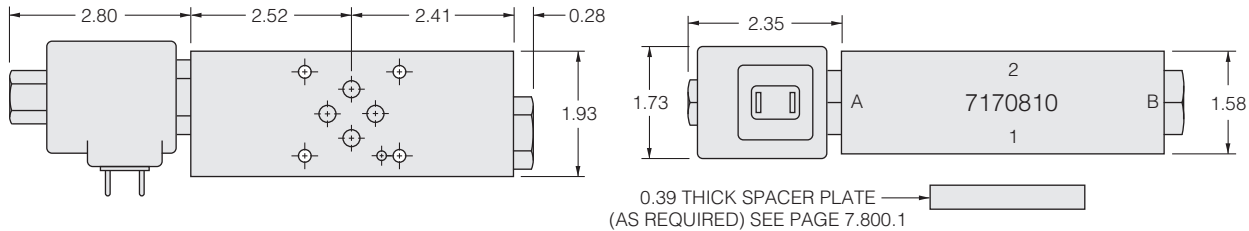


## Solenoid Sandwich Valves

HydraForce solenoid-operated cartridge valves offer designers increased flexibility with new methods of load holding, regeneration, system unloading, etc.

HydraForce solenoids are available with many termination/voltage combinations, all of which are continuous duty rated.

Due to the size of HydraForce -10 size coils, use with standard sub-bases and sub-plate type valves will likely require the use of a spacer plate to prevent an interference fit.



**Normally Open, Block B to A Model No. SV10-23-S03F-x-xx**

Side Up: 2      Plug: CP10-20-x      Seal Plate: No      Catalog Ref.: 1.053.1  
 Block No.: 7170810      Plug Side: B

**Normally Closed, Block B to A Model No. SV10-22-S03F-x-xx**

Side Up: 2      Plug: CP10-20-x      Seal Plate: No      Catalog Ref.: 1.044.1  
 Block No.: 7170810      Plug Side: B

**Normally Open, Block B to A, A to B Model No. SV10-25-S03F-x-xx**

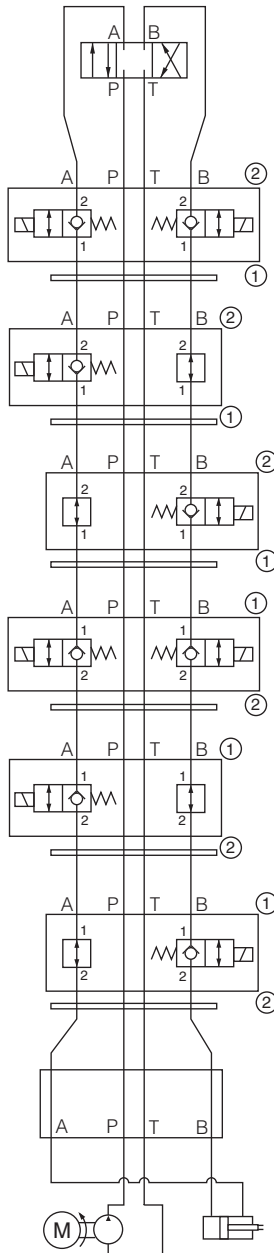
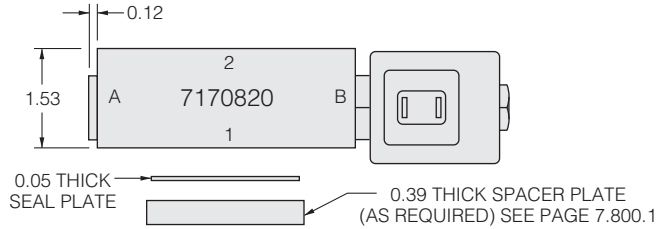
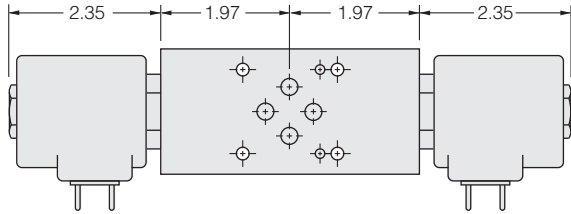
Side Up: 2      Plug: CP10-20-x      Seal Plate: No      Catalog Ref.: 1.076.1  
 Block No.: 7170810      Plug Side: B      Max. Flow: 6 gpm

**Normally Closed, Block B to A, A to B Model No. SV10-24-S03F-x-xx**

Side Up: 2      Plug: CP10-20-x      Seal Plate: No      Catalog Ref.: 1.064.1  
 Block No.: 7170810      Plug Side: B

**ISO/CETOP 3 Manifold**

# Solenoid Sandwich Valves



**Dual Blocking, Normally Closed**

Side Up: 2                      Plug: None  
 Block No.: 7170820        Plug Side: n/a

**Model No. SV10-22-S03D-x-xx**

Seal Plate: Yes              Catalog Ref.: 1.044.1

**Blocking on A, Normally Closed**

Side Up: 2                      Plug: 6103010  
 Block No.: 7170820        Plug Side: B

**Model No. SV10-22-S03A-x-xx**

Seal Plate: Yes              Catalog Ref.: 1.044.1

**Blocking on B, Normally Closed**

Side Up: 2                      Plug: 6103010  
 Block No.: 7170820        Plug Side: A

**Model No. SV10-22-S03B-x-xx**

Seal Plate: Yes              Catalog Ref.: 1.044.1

**Dual Load Holding, Normally Closed**

Side Up: 1                      Plug: None  
 Block No.: 7170820        Plug Side: n/a

**Model No. SV10-22-S03H-x-xx**

Seal Plate: Yes              Catalog Ref.: 1.044.1

**Load Holding on A, Normally Closed**

Side Up: 1                      Plug: 6103010  
 Block No.: 7170820        Plug Side: B

**Model No. SV10-22-S03G-x-xx**

Seal Plate: Yes              Catalog Ref.: 1.044.1

**Load Holding on B, Normally Closed**

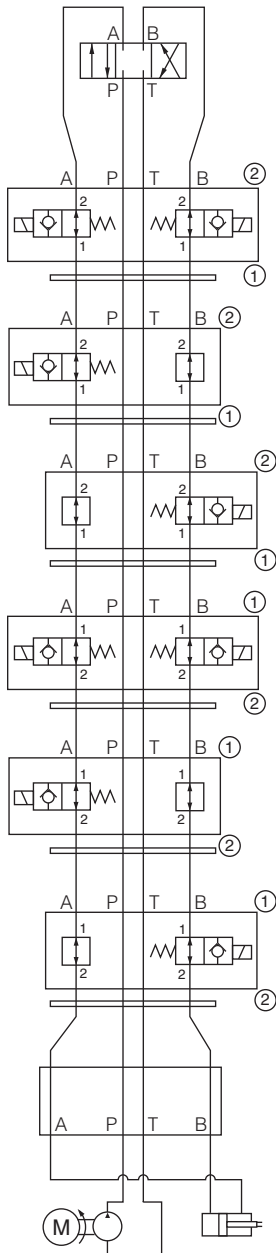
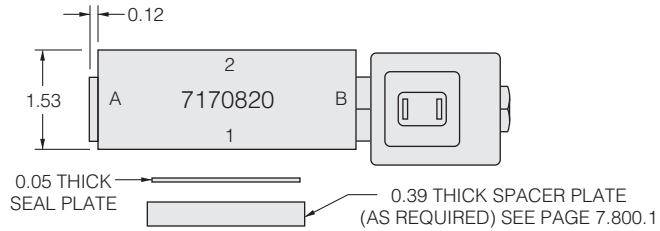
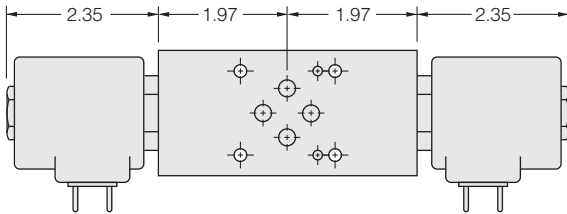
Side Up: 1                      Plug: 6103010  
 Block No.: 7170820        Plug Side: A

**Model No. SV10-22-S03L-x-xx**

Seal Plate: Yes              Catalog Ref.: 1.044.1

**ISO/CETOP 3 Manifold**

# Solenoid Sandwich Valves



**Dual Blocking, Normally Open**

Side Up: 2                      Plug: None  
 Block No.: 7170820        Plug Side: n/a

**Model No. SV10-23-S03D-x-xx**

Seal Plate: Yes              Catalog Ref.: 1.053.1

**Blocking on A, Normally Open**

Side Up: 2                      Plug: 6103010  
 Block No.: 7170820        Plug Side: B

**Model No. SV10-23-S03A-x-xx**

Seal Plate: Yes              Catalog Ref.: 1.053.1

**Blocking on B, Normally Open**

Side Up: 2                      Plug: 6103010  
 Block No.: 7170820        Plug Side: A

**Model No. SV10-23-S03B-x-xx**

Seal Plate: Yes              Catalog Ref.: 1.053.1

**Dual Load Holding, Normally Open**

Side Up: 1                      Plug: None  
 Block No.: 7170820        Plug Side: n/a

**Model No. SV10-23-S03H-x-xx**

Seal Plate: Yes              Catalog Ref.: 1.053.1

**Load Holding on A, Normally Open**

Side Up: 1                      Plug: 6103010  
 Block No.: 7170820        Plug Side: B

**Model No. SV10-23-S03G-x-xx**

Seal Plate: Yes              Catalog Ref.: 1.053.1

**Load Holding on B, Normally Open**

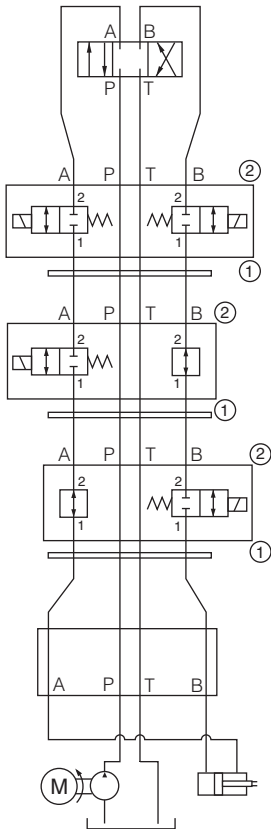
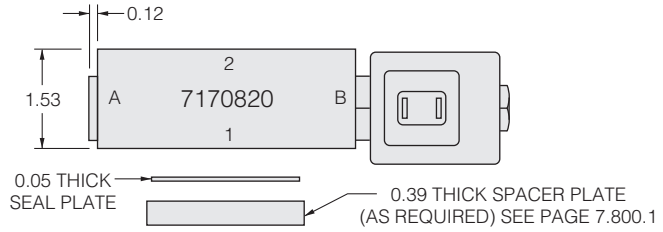
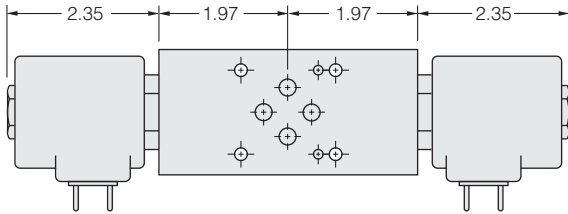
Side Up: 1                      Plug: 6103010  
 Block No.: 7170820        Plug Side: A

**Model No. SV10-23-S03L-x-xx**

Seal Plate: Yes              Catalog Ref.: 1.053.1

**ISO/CETOP 3 Manifold**

# Solenoid Sandwich Valves



### Dual Blocking, Normally Closed

Side Up: 2  
Block No.: 7170820  
Plug: None  
Plug Side: n/a

### Model No. SV10-24-S03D-x-xx

Seal Plate: Yes  
Catalog Ref.: 1.064.1

### Blocking on A, Normally Closed

Side Up: 2  
Block No.: 7170820  
Plug: 6103010  
Plug Side: B

### Model No. SV10-24-S03A-x-xx

Seal Plate: Yes  
Catalog Ref.: 1.064.1

### Blocking on B, Normally Closed

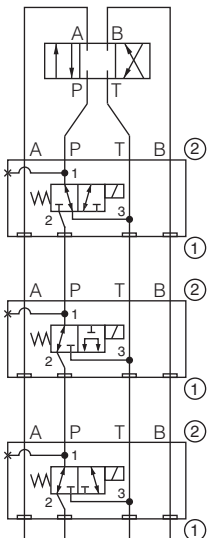
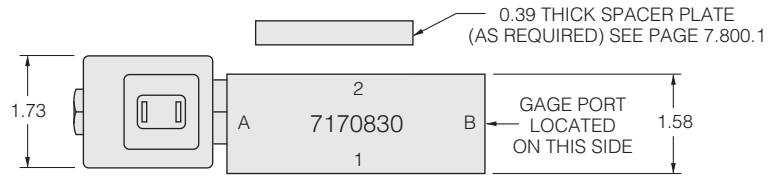
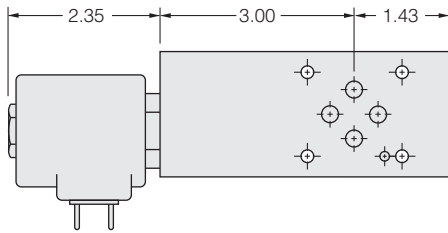
Side Up: 2  
Block No.: 7170820  
Plug: 6103010  
Plug Side: A

### Model No. SV10-24-S03B-x-xx

Seal Plate: Yes  
Catalog Ref.: 1.064.1

### ISO/CETOP 3 Manifold

# Solenoid Sandwich Valves



**Solenoid 3-Way, Selector on P Model No. SV10-33-S030-x-xx**

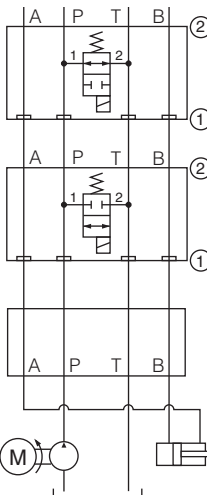
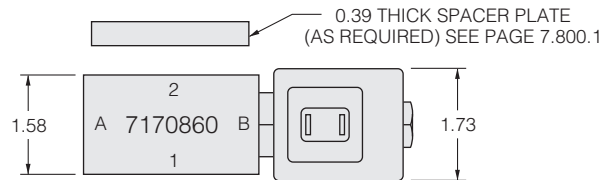
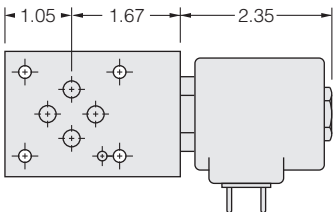
Side Up: 2      Plug: None      Seal Plate: No      Catalog Ref.: 1.372.1  
 Block No.: 7170830      Plug Side: n/a      Max. Flow: 5 gpm      May Require Spacer Plate

**Solenoid 3-Way, Selector on P Model No. SV10-34-S030-x-xx**

Side Up: 2      Plug: None      Seal Plate: No      Catalog Ref.: 1.380.1  
 Block No.: 7170830      Plug Side: n/a      Max. Flow: 7 gpm      May Require Spacer Plate

**Solenoid 3-Way, Selector on P Model No. SV10-31-S030-x-xx**

Side Up: 2      Plug: None      Seal Plate: No      Catalog Ref.: 1.368.1  
 Block No.: 7170830      Plug Side: n/a      Max. Flow: 6 gpm      May Require Spacer Plate



**Solenoid 2-Way, Dump P to T, N.O. Model No. SV10-25-S030-x-xx**

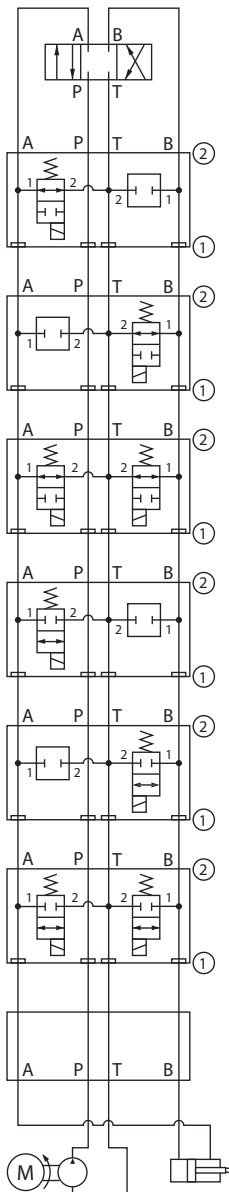
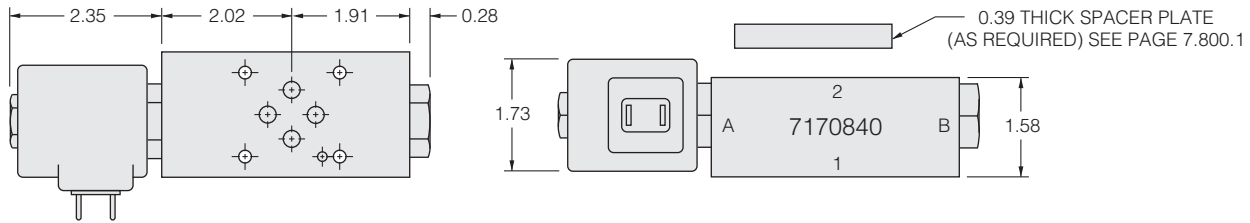
Side Up: 2      Plug: None      Seal Plate: No      Catalog Ref.: 1.076.1  
 Block No.: 7170860      Plug Side: n/a      Max. Flow: 6 gpm

**Solenoid 2-Way, Dump P to T, N.C. Model No. SV10-24-S030-x-xx**

Side Up: 2      Plug: None      Seal Plate: No      Catalog Ref.: 1.064.1  
 Block No.: 7170860      Plug Side: n/a

**ISO/CETOP 3 Manifold**

# Solenoid Sandwich Valves



**Solenoid, Unload A to T, Normally Open**

Side Up: 2                      Plug: CP10-20-x  
 Block No.: 7170840        Plug Side: B

**Model No. SV10-25-S03U-x-xx**

Seal Plate: No                Catalog Ref.: 1.076.1  
 Max. Flow: 6 gpm

**Solenoid, Unload B to T, Normally Open**

Side Up: 2                      Plug: CP10-20-x  
 Block No.: 7170840        Plug Side: A

**Model No. SV10-25-S03V-x-xx**

Seal Plate: No                Catalog Ref.: 1.076.1  
 Max. Flow: 6 gpm

**Solenoid, Unload A & B to T, Normally Open**

Side Up: 2                      Plug: None  
 Block No.: 7170840        Plug Side: n/a

**Model No. SV10-25-S03W-x-xx**

Seal Plate: No                Catalog Ref.: 1.076.1  
 Max. Flow: 6 gpm

**Solenoid, Unload A to T, Normally Closed**

Side Up: 2                      Plug: CP10-20-x  
 Block No.: 7170840        Plug Side: B

**Model No. SV10-24-S03U-x-xx**

Seal Plate: No                Catalog Ref.: 1.064.1

**Solenoid, Unload B to T, Normally Closed**

Side Up: 2                      Plug: CP10-20-x  
 Block No.: 7170840        Plug Side: A

**Model No. SV10-24-S03V-x-xx**

Seal Plate: No                Catalog Ref.: 1.064.1

**Solenoid, Unload A & B to T, Normally Closed**

Side Up: 2                      Plug: None  
 Block No.: 7170840        Plug Side: n/a

**Model No. SV10-24-S03W-x-xx**

Seal Plate: No                Catalog Ref.: 1.064.1

**ISO/CETOP 3 Manifold**