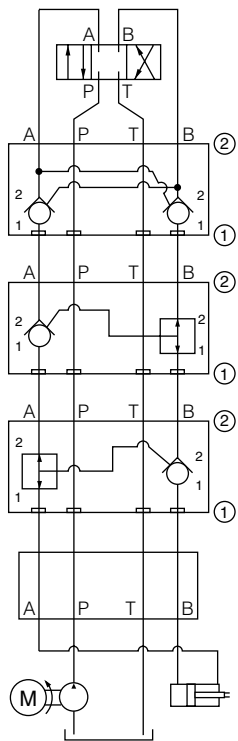
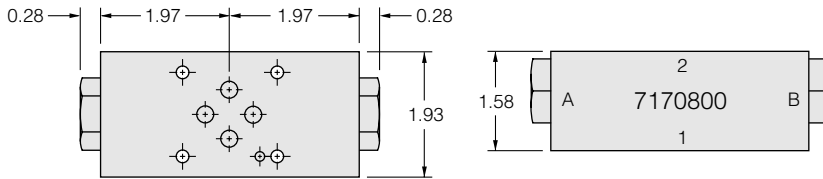


Directional Sandwich Valves

HydraForce's broad range of directional cartridge valves in sandwich format offers unique opportunities to the system designer.

All products are rated to 210 bar (3000 psi) and are made with hardened working parts to assure long, trouble-free operation.



Dual P.O. Check

Side Up: 2
Block No.: 7170800

Model No. DCV08-S03K-x

Plug: None
Plug Side: n/a
Seal Plate: No
Max Flow: 8 gpm

Catalog Ref.: 4.250.1
Piston:

P.O. Check on A

Side Up: 2
Block No.: 7170800

Model No. PCV08-S03I-x

Plug: 5294000
Plug Side: B
Seal Plate: No
Max. Flow: 8 gpm

Catalog Ref.: None
Piston:

P.O. Check on B

Side Up: 2
Block No.: 7170800

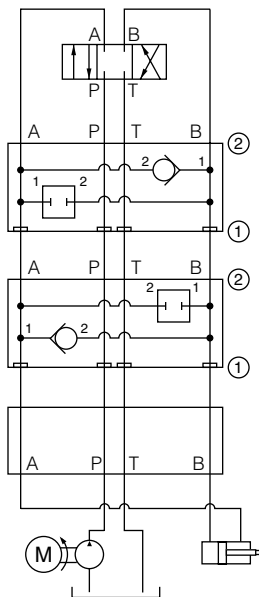
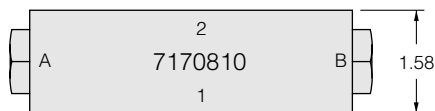
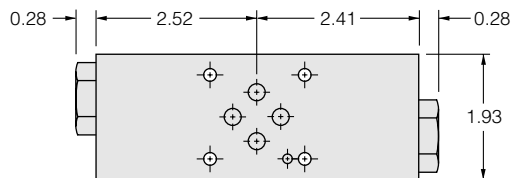
Model No. PCV08-S03J-x

Plug: 5294000
Plug Side: A
Seal Plate: No
Max. Flow: 8 gpm

Catalog Ref.: None
Piston:

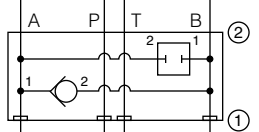
ISO/CETOP 3 Manifold

Directional Sandwich Valves



Flow Checked Out, A Freeflow from B
 Side Up: 2 Plug: CP10-20-x
 Block No.: 7170810 Plug Side: B

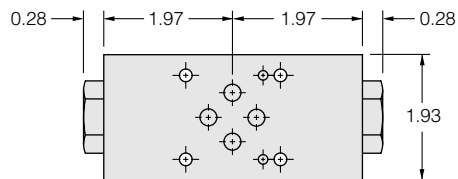
Model No. CV10-20-S03E-x-xx
 Seal Plate: No Catalog Ref.: 4.011.1



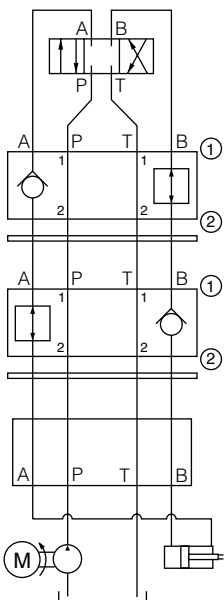
Flow Checked Out, B Freeflow from A
 Side Up: 2 Plug: CP10-20-x
 Block No.: 7170810 Plug Side: A

Model No. CV10-20-S03F-x-xx
 Seal Plate: No Catalog Ref.: 4.011.1

ISO/CETOP 3 Manifold



0.05 THICK SEAL PLATE

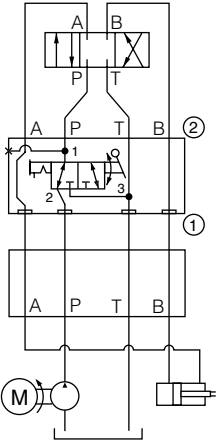
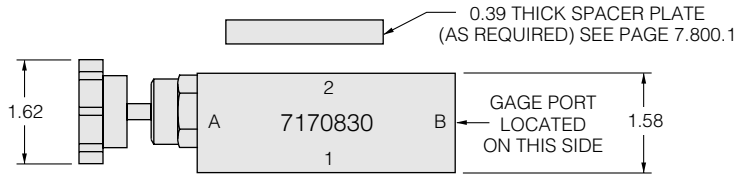
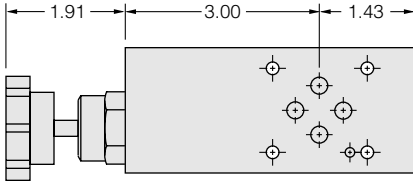


Flow Checked In A **Model No. CV10-20-S03A-x-xx**
 Side Up: 1 Plug: 6103010 Seal Plate: Yes Catalog Ref.: 4.011.1
 Block No.: 7170820 Plug Side: B Max Flow:

Flow Checked In B **Model No. CV10-20-S03B-x-xx**
 Side Up: 1 Plug: 6103010 Seal Plate: Yes Catalog Ref.: 4.011.1
 Block No.: 7170820 Plug Side: A Max. Flow:

ISO/CETOP 3 Manifold

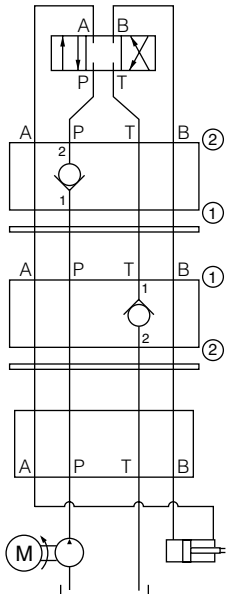
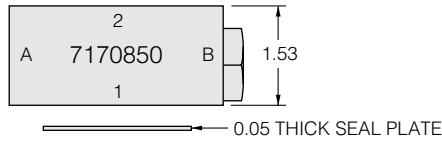
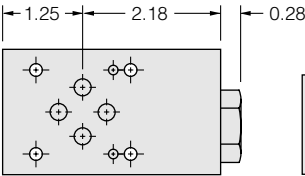
Directional Sandwich Valves



Manual Rotary Selector on P Model No. MR10-31-S030-x

Side Up: 2 Plug: None Seal Plate: No Catalog Ref.: 4.774.1
 Block No.: 7170830 Plug Side: n/a Max Flow: 10 gpm
 Note: Knob Kit part no. 5341010 ordered separately; see catalog page 4.770.1

ISO/CETOP 3 Manifold



Flow Checked Out P Model No. CV10-20-S03P-x-xx

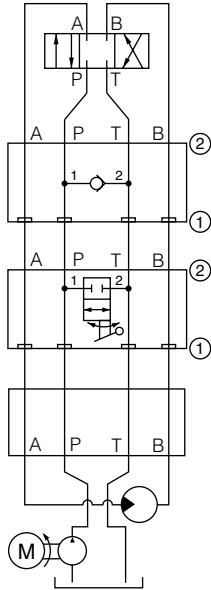
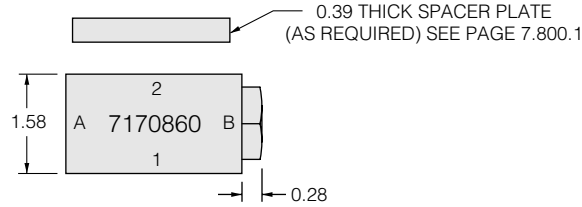
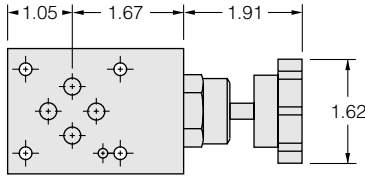
Side Up: 2 Plug: None Seal Plate: Yes Catalog Ref.: 4.011.1
 Block No.: 7170850 Plug Side: n/a Max Flow:

Flow Checked Out T Model No. CV10-20-S03T-x-xx

Side Up: 1 Plug: None Seal Plate: Yes Catalog Ref.: 4.011.1
 Block No.: 7170850 Plug Side: n/a Max Flow:

ISO/CETOP 3 Manifold

Directional Sandwich Valves



Anti-Cav Check P to T

Model No. CV10-21-S03S-x04

Side Up: 2 Plug: None Seal Plate: No Catalog Ref.: 4.019.1
 Block No.: 7170860 Plug Side: n/a

Manual Rotary Unload P to T

Model No. MR10-20x-S03S-x

Side Up: 2 Plug: None Seal Plate: No Catalog Ref.: 5.013.1
 Block No.: 7170860 Plug Side: n/a Max. Flow: 13 gpm

Note: Handle Kit part no. 5341010 ordered separately. Back pressure on P may require use of Spacer Plate(s).

ISO/CETOP 3 Manifold