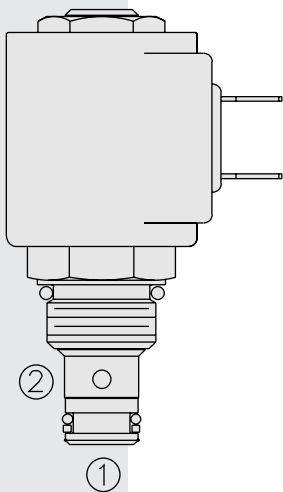


SL08-22 Low Flow, 2-Way, Normally Closed



DESCRIPTION

A solenoid-operated, 2-way, normally closed, direct-acting, needle-type, screw-in hydraulic cartridge valve, designed to function as a load-holding device for low flow circuits requiring extremely low leakage.

OPERATION

When de-energized, the **SL08-22** blocks flow from ② to ①.

When energized, the needle point lifts to open the valve bidirectionally.

Operation of Manual Override Option: To override, push button in, twist counter-clockwise 180° and release. In this position, the valve will remain open.

To return to normal operation, push button in, twist clockwise 180° and release. Override will be detented in this position.

FEATURES

- Continuous-duty rated solenoid.
- Hardened seat for long life and low leakage.
- Optional coil voltages and terminations.
- Cartridges are voltage interchangeable.
- Unitized, molded coil design.
- Industry common cavity.
- Manual override option.
- Optional waterproof E-Coils rated up to IP69K.
- Compact size.

RATINGS

Operating Pressure: 207 bar (3000 psi)

Internal Leakage: 0.15 cc/minute (3 drops/minute) max. at 207 bar (3000 psi)

Temperature: -40 to 120°C with standard Buna seals

Coil Duty Rating: Continuous from 85% to 115% of nominal voltage

Response Time: First indication of change of state with 100% voltage supplied at 80% of nominal flow rating (② to ① direction):
Energized: 22 msec.; De-energized: 40 msec.

Initial Coil Current Draw at 20°C: Standard Coil: 1.2 amps at 12 VDC; 0.13 amps at 115 VAC (full wave rectified). E-Coil: 1.4 amps at 12 VDC; 0.7 amps at 24 VDC

Minimum Pull-in Voltage: 85% of nominal at 207 bar (3000 psi)

Filtration: See page 9.010.1

Fluids: Mineral-based or synthetics with lubricating properties at viscosities of 7.4 to 420 cSt (50 to 2000 sus); See Temperature and Oil Viscosity, page 9.060.1

Installation: No restrictions; See page 9.020.1

Cavity: VC08-2; See page 9.108.1

Cavity Tool: CT08-2XX; See page 8.600.1

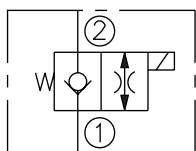
Seal Kit: SK08-2X-T; See page 8.650.1

Coil Nut: Part No. 7004400;

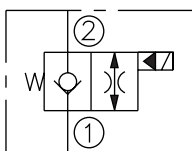
For E-coils manufactured prior to 1-1-04, see page 3.400.1 for coil nut info.

SYMBOLS

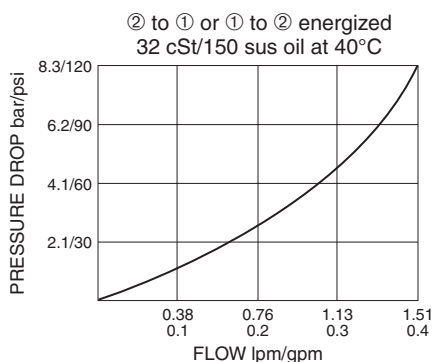
USASI:



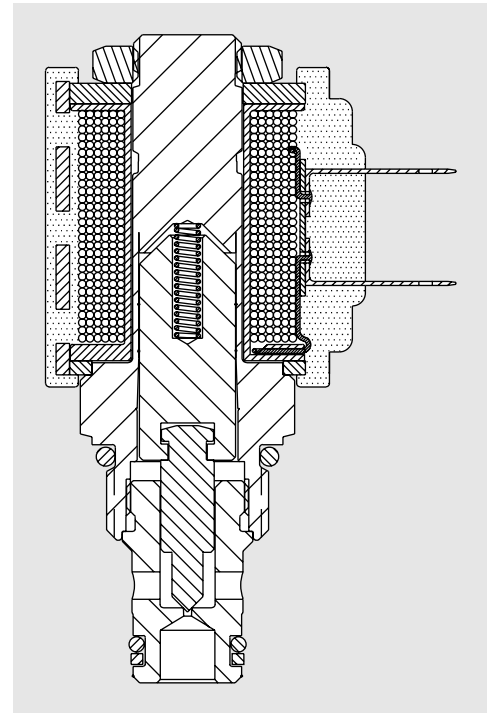
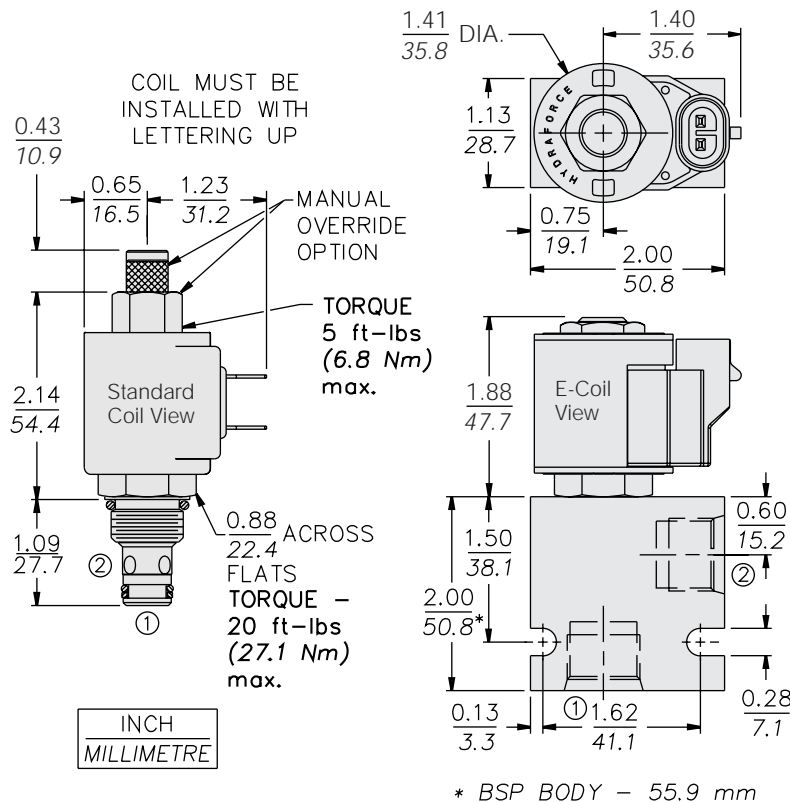
ISO:



PERFORMANCE (Cartridge Only)



DIMENSIONS



MATERIALS

Cartridge: Weight: 0.09 kg. (0.20 lbs.); Steel with hardened work surfaces. Zinc-plated exposed surfaces; Buna N O-rings and back-ups standard.

Standard Ported Body: Weight: 0.16 kg. (0.35 lbs.); Anodized high-strength 6061 T6 aluminum alloy, rated to 207 bar (3000 psi); Ductile iron bodies available; dimensions may differ. See page 8.008.1

Standard Coil: Weight: 0.11 kg. (0.25 lbs.); Unitized thermoplastic encapsulated, Class H high temperature magnetwire. See page 3.200.1

E-Coil: Weight: 0.14 kg. (0.3 lbs.); Perfect wound, fully encapsulated with rugged external metal shell; Rated up to IP69K with integral connectors.

Note: See page 3.400.1 for all E-Coil retrofit applications.

TO ORDER

SL08-22 - - -			
Option		Voltage	Termination (VDC)
None (Blank)		Std. Coil	Std. Coil
152µ Screen	S	0 Less Coil**	DS Dual Spades
Manual Override	M	10 10 VDC [†]	DG DIN 43650
		12 12 VDC	DL Leadwires (2)
		24 24 VDC	DL/W Leads w/Weatherpak [®] Connectors
Porting		36 36 VDC	DR Deutsch DT04-2P
Cartridge Only	0	48 48 VDC	
SAE 4	4T	24 24 VAC	Termination (VAC)
SAE 6	6T	115 115 VAC	Std. Coil
1/4 in. BSP*	2B	230 230 VAC	AG DIN 43650
3/8 in. BSP*	3B		AP 1/2 in. Conduit
1/2 in. BSP*	4B		Termination (VDC)
*BSP Body; U.K. Mfr. Only			E-Coil
Seals		E-Coil	ER Deutsch DT04-2P (IP69K Rated)
Buna N (Std.)	N	10 10 VDC	EY Metri-Pack [®] 150 (IP69K Rated)
Fluorocarbon	V	12 12 VDC	
		20 20 VDC	
		24 24 VDC	

**Includes Std. Coil Nut

[†] DS, DW or DL terminations only.

Coils with internal diode are available. Consult factory.