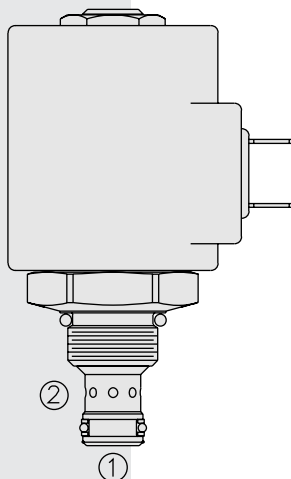
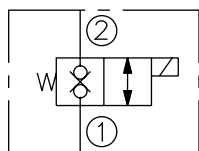


## SV38-26 Blocking/Low Flow, 2-Way, Normally Closed

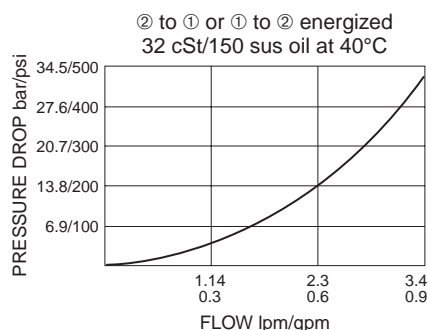


### SYMBOLS

#### USASI/ISO:



### PERFORMANCE (Cartridge Only)



### DESCRIPTION

A solenoid-operated, 2-way, normally closed, direct-acting, needle-type, screw-in hydraulic cartridge valve, designed to function as a blocking or load-holding device for low flow circuits.

### OPERATION

When de-energized, the **SV38-26** blocks flow in both directions, to pressure rating. If pressure on ① exceeds the rating, flow may pass from ① to ②.

When energized, the needle point lifts to open the valve bidirectionally. Port ② is the recommended load-holding port.

**Operation of Manual Override Option:** To override, push button in, twist counter-clockwise 180° and release. In this position, the valve will remain open.

To return to normal operation, push button in, twist clockwise 180° and release. Override will be detented in this position.

### FEATURES

- Continuous-duty rated solenoid.
- Hardened seat for long life and low leakage.
- Optional coil voltages and terminations.
- Cartridges are voltage interchangeable.
- Unitized, molded coil design.
- Industry common cavity.
- Manual override option.
- Optional waterproof E-Coils rated up to IP69K.

### RATINGS

**Operating Pressure:** 207 bar (3000 psi)

**Proof Pressure:** 520 bar (7540 psi)

**Internal Leakage:** 0.10 cc/minute (2 drops/minute) max. at 207 bar (3000 psi)

**Temperature:** -40 to 120°C with standard Buna seals

**Coil Duty Rating:** Continuous from 85% to 115% of nominal voltage

**Response Time:** First indication of change of state with 100% voltage supplied at 80% of nominal flow rating: Energized: 22 msec.; De-energized: 5 msec.

**Initial Coil Current Draw at 20°C:** Standard Coil: 1.67 amps at 12 VDC; 0.18 amps at 115 VAC (full wave rectified).

E-Coil: 1.7 amps at 12 VDC; 0.85 amps at 24 VDC

**Minimum Pull-in Voltage:** 85% of nominal at 207 bar (3000 psi)

**Filtration:** See page 9.010.1

**Fluids:** Mineral-based or synthetics with lubricating properties at viscosities of 7.4 to 420 cSt (50 to 2000 sus); See Temperature and Oil Viscosity, page 9.060.1

**Installation:** No restrictions; See page 9.020.1

**Cavity:** VC08-2; See page 9.108.1

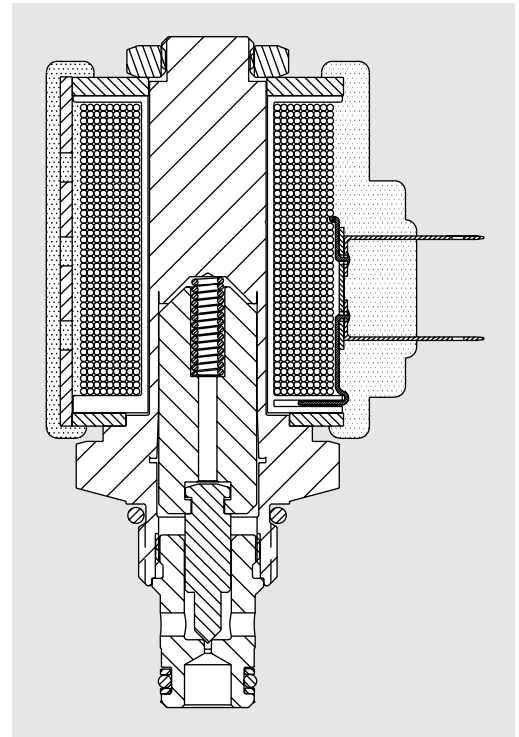
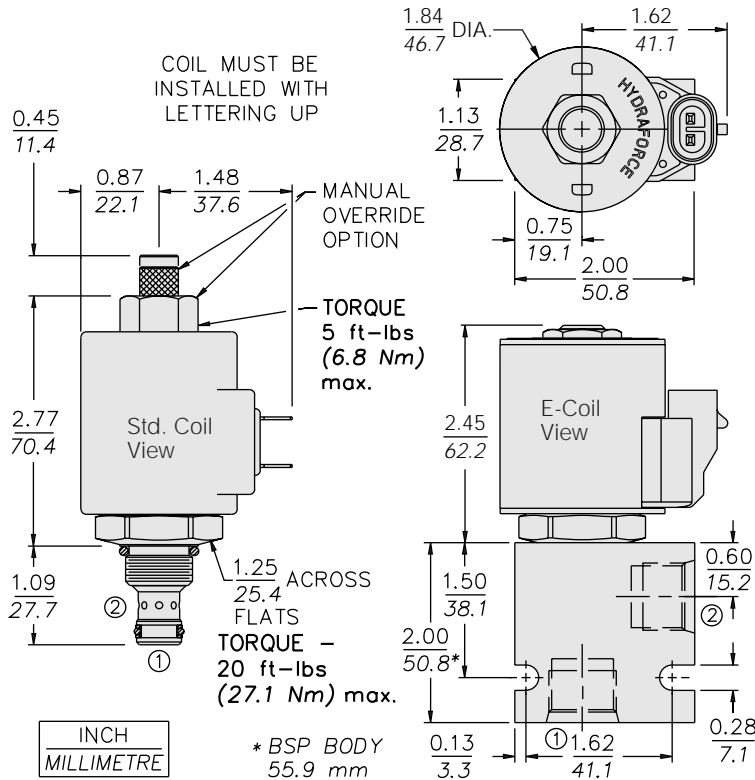
**Cavity Tool:** CT08-2XX; See page 8.600.1

**Seal Kit:** SK08-2X-M; See page 8.650.1

**Coil Nut:** Part No. 7004400;

For E-coils manufactured prior to 1-1-04, see page 3.400.1 for coil nut info.

**DIMENSIONS**



**MATERIALS**

**Cartridge:** Weight: 0.15 kg. (0.33 lbs.); Steel with hardened work surfaces. Zinc-plated exposed surfaces. Buna N O-rings and polyester elastomer back-up standard.

**Standard Ported Body:** Weight: 0.16 kg. (0.35 lbs.); Anodized high-strength 6061 T6 aluminum alloy, rated to 207 bar (3000 psi). Ductile iron bodies available; dimensions may differ. See page 8.008.1

**Standard Coil:** Weight: 0.27 kg. (0.60 lbs.); Unitized thermoplastic encapsulated, Class H high temperature magnetwire. See page 3.200.1

**E-Coil:** Weight: 0.41 kg. (0.9 lbs.); Fully encapsulated with rugged external metal shell. Rated up to IP69K with integral connectors. **Note: See page 3.400.1 for all E-Coil retrofit applications.**

**TO ORDER**

**SV38-26**

<b>Option</b>		<b>Voltage</b>	<b>Termination (VDC)</b>
None (Blank)		<b>Std. Coil</b>	<b>Std. Coil</b>
152µ Screen	<b>S</b>	<b>0</b> Less Coil**	<b>DS</b> Dual Spades
Manual Override	<b>M</b>	<b>10</b> 10 VDC†	<b>DG</b> DIN 43650
Manual Override	<b>Y</b>	<b>12</b> 12 VDC	<b>DL</b> Leadwires (2)
Manual Override	<b>J</b>	<b>24</b> 24 VDC	<b>DL/W</b> Leads w/Weatherpak® Connectors
For Manual Override options see page 1.001.1		<b>36</b> 36 VDC	<b>DR</b> Deutsch DT04-2P
		<b>48</b> 48 VDC	
		<b>24</b> 24 VAC	<b>Termination (VAC)</b>
		<b>115</b> 115 VAC	<b>Std. Coil</b>
		<b>230</b> 230 VAC	<b>AG</b> DIN 43650
		**Includes Std. Coil Nut	<b>AP</b> 1/2 in. Conduit
		† DS, DW or DL terminations only.	<b>Termination (VDC)</b>
<b>Porting</b>		<b>E-Coil</b>	<b>E-Coil</b>
Cartridge Only	<b>0</b>	<b>10</b> 10 VDC	<b>ER</b> Deutsch DT04-2P (IP69K Rated)
SAE 4	<b>4T</b>	<b>12</b> 12 VDC	<b>EY</b> Metri-Pack® 150 (IP69K Rated)
SAE 6	<b>6T</b>	<b>20</b> 20 VDC	
1/4 in. BSP*	<b>2B</b>	<b>24</b> 24 VDC	
3/8 in. BSP*	<b>3B</b>		
1/2 in. BSP*	<b>4B</b>		
*BSP Body; U.K. Mfr. Only			
<b>Seals</b>			
Buna N (Std.)	<b>N</b>		
Fluorocarbon	<b>V</b>		

Coils with internal diode are available. Consult factory.