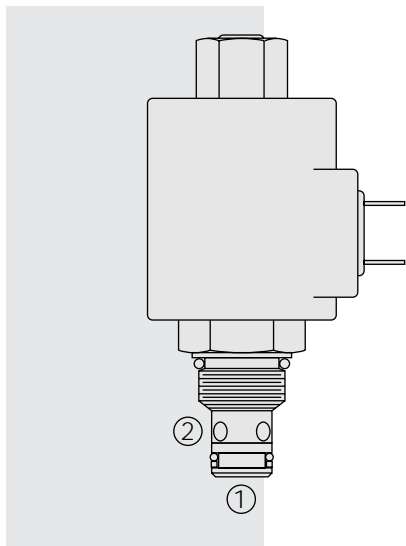


SV38-28 Poppet, 2-Way, N.C., Bi-Directional Blocking



DESCRIPTION

A solenoid-operated, two-way, normally closed, poppet-type, bi-directional blocking, screw-in hydraulic cartridge valve, designed for low leakage in load-holding applications.

OPERATION

When de-energized, the **SV38-28** blocks flow in both directions. When energized, the valve's poppet opens on its seat, allowing flow from ② to ① and ① to ②.

Consult factory if used serially with orifice disc.

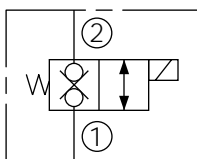
Operation of Manual Override Option: To override, push and hold override button.

FEATURES

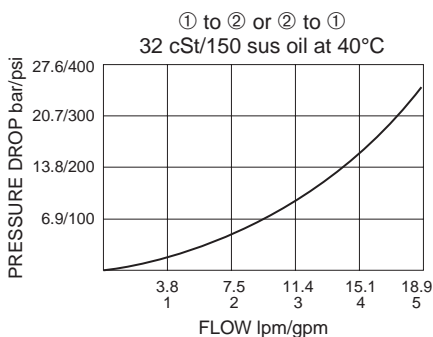
- Continuous-duty rated coil.
- Hardened seat for long life and low leakage.
- Optional coil voltages and terminations.
- Efficient wet-armature construction.
- Cartridges are voltage interchangeable.
- Unitized, molded coil design.
- Manual override option.
- Optional waterproof E-Coils rated up to IP69K.
- Industry common cavity.

SYMBOLS

USASI/ISO:



PERFORMANCE (Cartridge Only)



RATINGS

Operating Pressure: 207 bar (3000 psi)

Flow: See Performance Chart

Internal Leakage: 0.25 cc/minute (5 drops/minute) max. at 207 bar (3000 psi)

Cycle Life: 500,000 cycles minimum at rated pressure
(due to internal dynamic seal life)

Temperature: -40 to 100°C with standard Buna N seals

Coil Duty Rating: Continuous from 85% to 115% of nominal voltage

Initial Coil Current Draw at 20°C: Standard Coil: 1.67 amps at 12 VDC;
0.18 amps at 115 VAC (full wave rectified).
E-Coil: 1.7 amps at 12 VDC; 0.85 amps at 24 VDC

Minimum Pull-in Voltage: 85% of nominal at 207 bar (3000 psi)

Filtration: See page 9.010.1

Fluids: Mineral-based or synthetics with lubricating properties at viscosities of
7.4 to 420 cSt (50 to 2000 sus); See Temperature and Oil Viscosity, page 9.060.1

Installation: No restrictions; See page 9.020.1

Cavity: VC08-2; See page 9.108.1

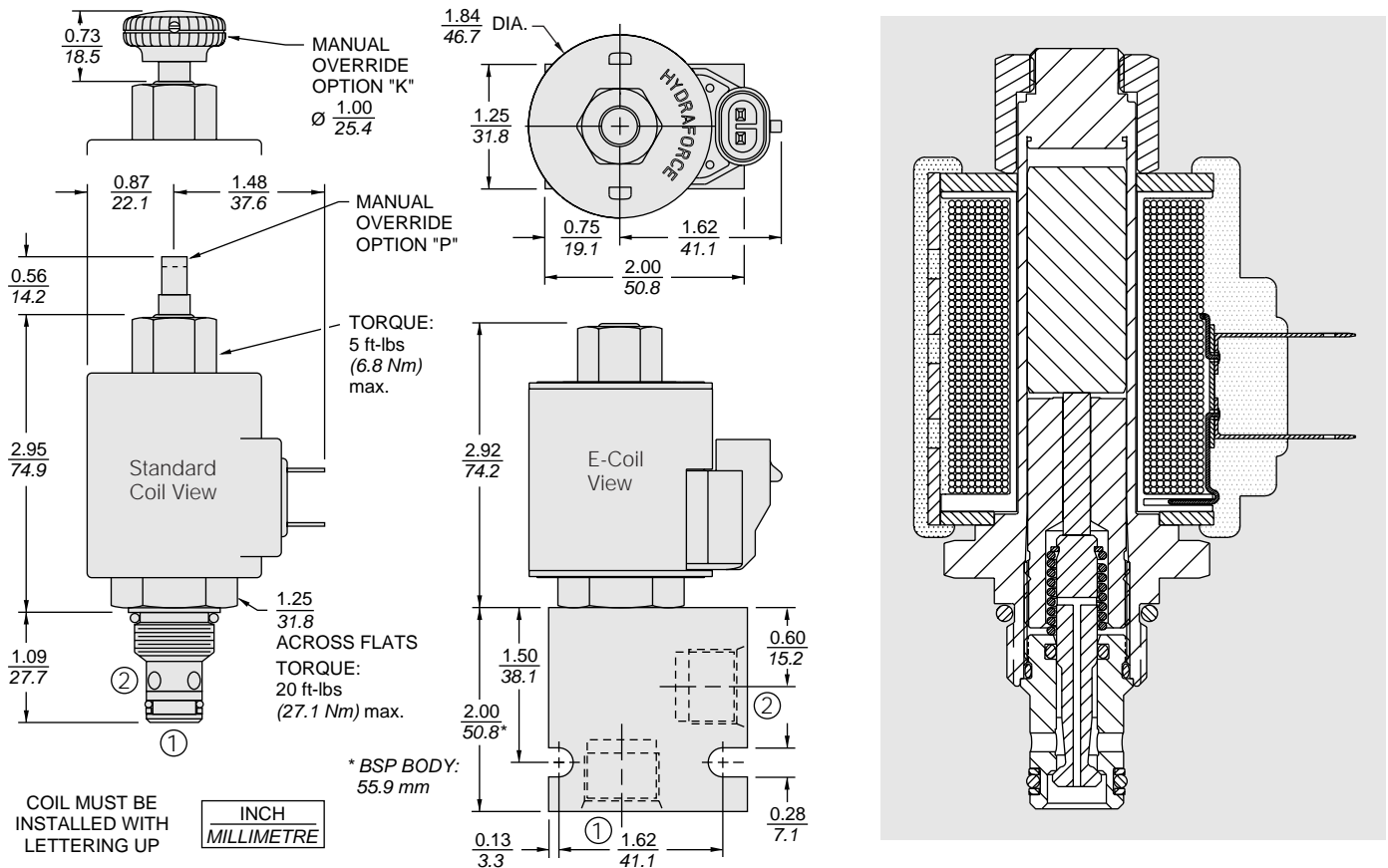
Cavity Tool: CT08-2XX; See page 8.600.1

Seal Kit: SK08-2x-M; See page 8.650.1

Coil Nut: Part No. 7004420;

For E-coils manufactured prior to 1-1-04, see page 3.400.1 for coil nut info.

DIMENSIONS



MATERIALS

Cartridge: Weight: 0.15 kg. (0.33 lbs.); Steel with hardened work surfaces. Zinc-plated exposed surfaces. Buna N O-rings and polyester elastomer back-up standard.

Standard Ported Body: Weight: 0.16 kg. (0.35 lbs.); Anodized high-strength 6061 T6 aluminum alloy, rated to 207 bar (3000 psi). Ductile iron bodies available; dimensions may differ. See page 8.008.1

Standard Coil: Weight: 0.27 kg. (0.60 lbs.); Unitized thermoplastic encapsulated, Class H high temperature magnetwire. See page 3.200.1

E-Coil: Weight: 0.41 kg. (0.9 lbs.); Fully encapsulated with rugged external metal shell. Rated up to IP69K with integral connectors.

Note: See page 3.400.1 for all E-Coil retrofit applications.

TO ORDER

SV38-28

| | | |
|---------------------------------------|-------------------------------|--|
| Option | Voltage | Termination (VDC) |
| None (Blank) | Std. Coil | Std. Coil |
| Screen S | 0 Less Coil** | DS Dual Spades |
| Manual Override without Knob P | 10 10 VDC [†] | DG DIN 43650 |
| Manual Override with Knob K | 12 12 VDC | DL Leadwires (2) |
| | 24 24 VDC | DL/W Leads w/Weatherpak® Connectors |
| | 36 36 VDC | DR Deutsch DT04-2P |
| | 48 48 VDC | |
| Porting | 24 24 VAC | Termination (VAC) |
| Cartridge Only 0 | 115 115 VAC | Std. Coil |
| SAE 4 4T | 230 230 VAC | AG DIN 43650 |
| SAE 6 6T | | AP 1/2 in. Conduit |
| 1/4 in. BSP* 2B | | Termination (VDC) |
| 3/8 in. BSP* 3B | | E-Coil |
| *BSP Body; U.K. Mfr. Only | E-Coil | ER Deutsch DT04-2P (IP69K Rated) |
| | 10 10 VDC | EY Metri-Pack® 150 (IP69K Rated) |
| Seals | 12 12 VDC | |
| Buna N (Std.) N | 20 20 VDC | |
| Fluorocarbon V | 24 24 VDC | |

**Includes Std. Coil Nut

[†] DS, DW or DL terminations only.

Coils with internal diode are available. Consult factory.