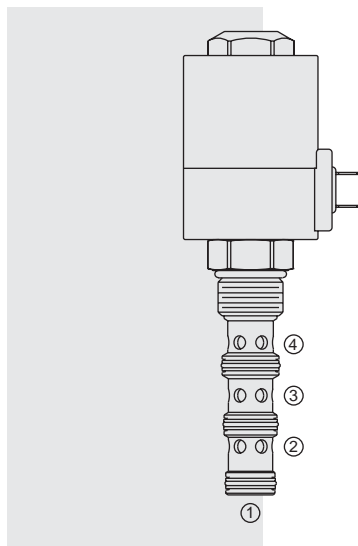


SV12-40R Spool, 2-Position, 4-Way



DESCRIPTION

A solenoid-operated, 2-position, 4-way, direct-acting spool-type, screw-in hydraulic cartridge valve.

OPERATION

When de-energized, the **SV12-40R** allows flow from ② to ①, and from ③ to ④.

When energized, the spool shifts to allow flow from ③ to ②, and from ④ to ①.

Note: Consult factory for applications where port ① will be used as an inlet.

FEATURES

- Continuous-duty rated solenoid.
- Hardened spool and cage for long life.
- Optional coil voltages and terminations.
- All ports may be fully pressurized.
- Manual override option.
- Heavy-duty waterproof E-Coils rated up to IP69K.

RATINGS

Operating Pressure: 240 bar (3500 psi) max.

Flow: See Performance Chart

Leakage: 410 cc/minute (25 cu. in./minute) at 240 bar (3500 psi)

Temperature: -40 to 120°C with Buna N seals

Coil Duty Rating: See Chart

Response Time: Pull-In: 100 msec; Drop-Out: 100 msec

Initial Coil Current Draw at 20°C: 2.8 amps at 12 VDC

Filtration: See page 9.010.1

Fluids: Mineral-based or synthetics with lubricating properties at viscosities of 7.4 to 420 cSt (50 to 2000 sus); See Temperature and Oil Viscosity, page 9.060.1

Installation: No restrictions; See page 9.020.1

Cavity: VC12-4; See page 9.112.1

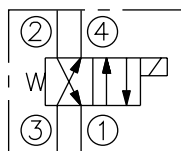
Cavity Tool: CT12-4XX; See page 8.600.1

Seal Kit: SK12-4X-MMM; See page 8.650.1

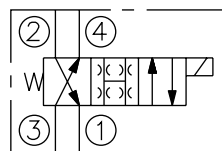
E-Coil Nut: Part No. 7085180

SYMBOLS

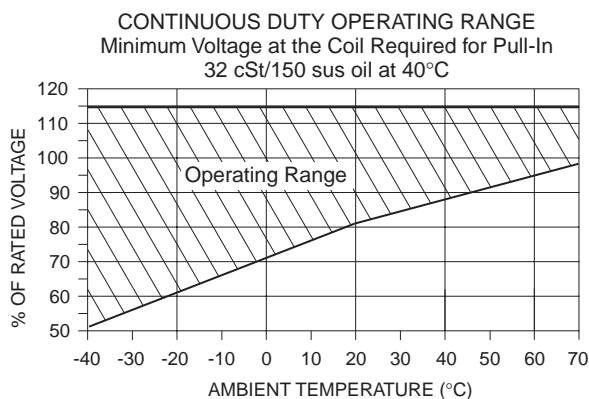
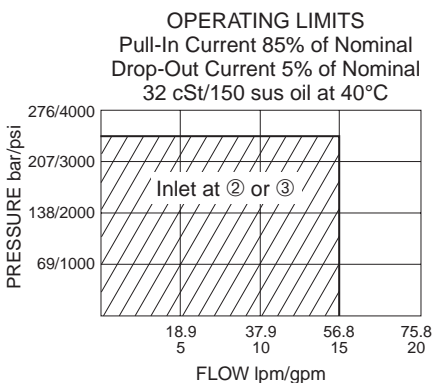
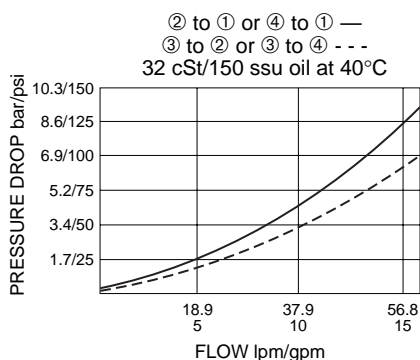
USASI/ISO:



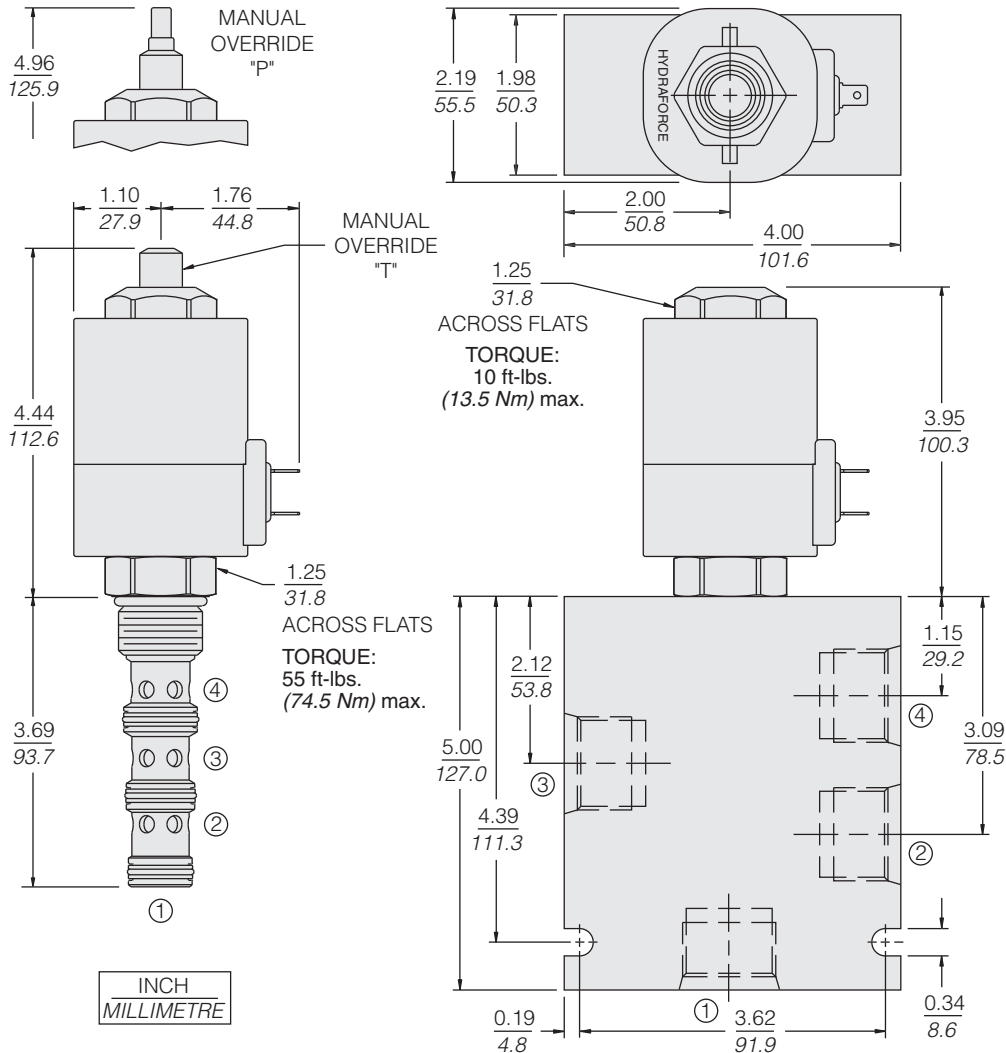
TRANSITION:



PERFORMANCE (Cartridge Only)



DIMENSIONS



MATERIALS

Cartridge: Weight: 0.39 kg. (0.85 lbs.) Steel with hardened work surfaces. Zinc-plated exposed surfaces. Buna N O-rings and TFE back-ups standard.

Standard Ported Body: Weight: 1.5 kg. (3.3 lbs.); Anodized high-strength 6061 T6 aluminum alloy, rated to 207 bar (3000 psi). Ductile iron bodies available; dimensions may differ. See page 8.012.1

E-Coil: Weight: 1.36 kg. (3.0 lbs.) Fully encapsulated with rugged external metal shell. Rated up to IP69K with integral connectors. See page 3.400.1,

TO ORDER

SV12-40R

Manual Override

- None (Blank)
- Option **P**
- Option **T**

Porting

- Cartridge Only **0**
- SAE 10 **10T**
- SAE 12 **12T**
- 3/4 in. BSP* **6B**

*BSP Body; U.K. Mfrs. Only

Seals

- Buna N (Std.) **N**
- Fluorocarbon **V**

Terminations (VDC)

- EL** Leadwires (2), IP65 Rated
- ES** Dual Spades, IP65 Rated
- EG** DIN 43650, IP65 Rated
- EW** Leads w/Weather-Pack® Connector, IP65 Rated
- EY** Metri-Pack® 150 Connector, IP69K Rated

Voltage

- 0** Less Coil
- 12** 12 VDC
- 24** 24 VDC
- 36** 36 VDC
- 48** 48 VDC

Coils with internal diode are available. Consult factory.

Other coil voltages may be available for OEM applications. Consult factory.