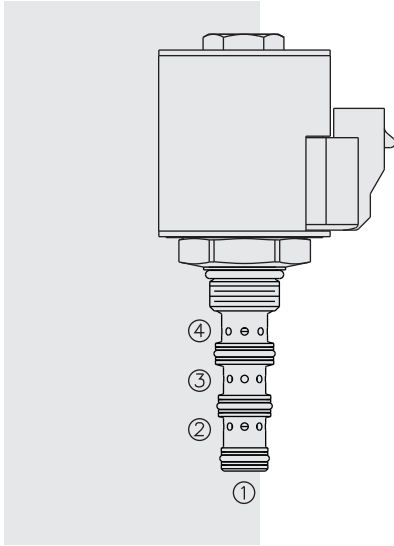


# SV58-41 Spool, 4-Way, 2-Position, High Pressure



## DESCRIPTION

A solenoid-operated, 4-way, 2-position, direct-acting spool-type, screw-in hydraulic cartridge valve designed for high pressure operation up to 345 bar (5000 psi).

## OPERATION

When de-energized, the **SV58-41** blocks flow to all ports.

When energized, the spool shifts to open flow between ③ and ④, as well as from ② to ①.

**Note:** Port ① must be connected to tank. Valve cannot withstand more than 276 bar (4000 psi) at the inlet of port ①.

## FEATURES

- Continuous-duty rated solenoid.
- Hardened precision spool and cage for long life.
- Optional coil voltages and terminations.
- Efficient wet-armature construction.
- Cartridges are voltage-interchangeable.
- Optional waterproof E-Coils rated up to IP69K.
- Unitized, molded coil design.
- Compact size.

## RATINGS

**Operating Pressure:** 345 bar (5000 psi)

**Flow:** See Performance Chart

**Internal Leakage:** 82 ml/minute (5 cu. in./minute) max. at 345 bar (5000 psi)

**Temperature:** -40 to 120°C with standard Buna seals;  
-26 to 204°C with Fluorocarbon seals; -54 to 107°C with Polyurethane seals

**Coil Duty Rating:** Continuous from 85% to 115% of nominal voltage

**Initial Coil Current Draw at 20°C:** Standard Coil: 1.67 amps at 12 VDC;  
0.18 amps at 115 VAC (full wave rectified).

E-Coil: 1.7 amps at 12 VDC; 0.85 amps at 24 VDC

**Minimum Pull-in Voltage:** 85% of nominal at 207 bar (3000 psi)

**Filtration:** See page 9.010.1

**Fluids:** Mineral-based or synthetics with lubricating properties at viscosities of 7.4 to 420 cSt (50 to 2000 sus); See Temperature and Oil Viscosity, page 9.060.1

**Installation:** No restrictions; See page 9.020.1

**Cavity:** VC08-4; See page 9.108.1

**Cavity Tool:** CT08-4XX; See page 8.600.1

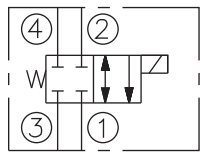
**Seal Kit:** SK58-4P-MMM; See page 8.650.1

**Coil Nut:** Part No. 7004400;

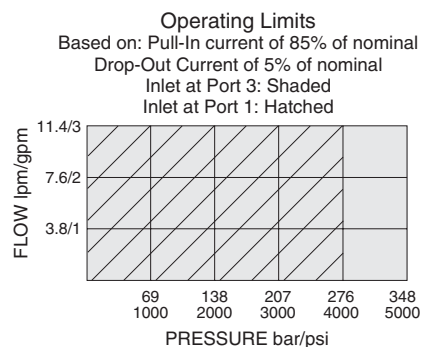
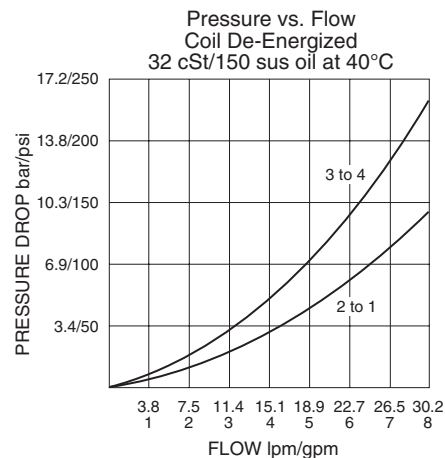
For E-coils manufactured prior to 1-1-04, see page 3.400.1 for coil nut info.

## SYMBOLS

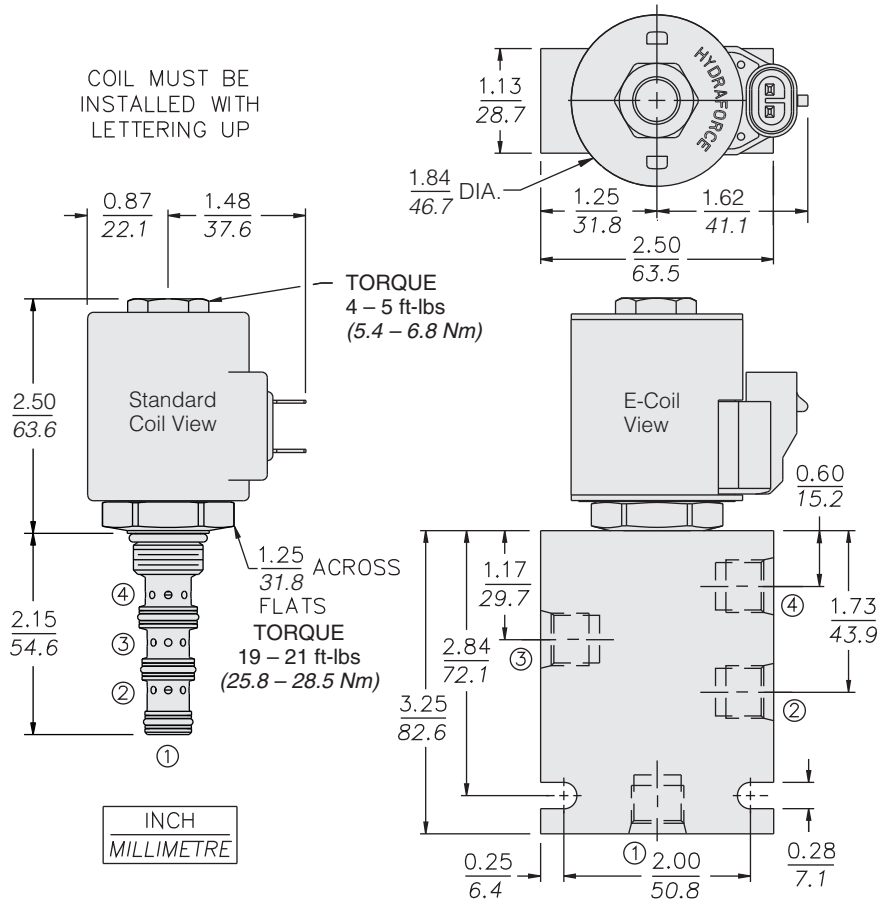
### USASI/ISO:



## PERFORMANCE (Cartridge Only)



**DIMENSIONS**



**MATERIALS**

**Cartridge:** Weight: 0.19 kg. (0.43 lbs.); Steel with hardened work surfaces. Zinc-plated exposed surfaces; Buna N O-rings and back-ups standard.

**Standard Ported Body:** Weight: 0.27 kg. (0.60 lbs.); Anodized high-strength 6061 T6 aluminum alloy, rated to 207 bar (3000 psi); Ductile iron bodies available; dimensions may differ. See page 8.008.1.

**Standard Coil:** Weight: 0.27 kg. (0.60 lbs.); Unitized thermoplastic encapsulated, Class H high temperature magnetwire. See page 3.200.1.

**E-Coil:** Weight: 0.41 kg. (0.9 lbs.); Fully encapsulated with rugged external metal shell. Rated up to IP69K with integral connectors. See page 3.400.1 for all E-Coil retrofit applications.

**TO ORDER**

<b>SV58-41</b>		<b>Option</b>		<b>Termination (VDC)</b>	
	None (Blank)		<b>Voltage</b>	<b>Std. D-Coil</b>	
			<b>Std. Coil</b>	<b>DS</b>	Dual Spades
			<b>0</b>	<b>DG</b>	DIN 43650
			<b>10</b>	<b>DL</b>	Leadwires (2)
			<b>12</b>	<b>DL/W</b>	Leads w/Weatherpak® Connectors
			<b>24</b>	<b>DR</b>	Deutsch DT04-2P
			<b>36</b>		
			<b>48</b>		
			<b>24</b>	<b>Termination (VAC)</b>	
			<b>115</b>	<b>Std. D-Coil</b>	
			<b>230</b>	<b>AG</b>	DIN 43650
				<b>AP</b>	1/2 in. Conduit
				<b>Termination (VDC)</b>	
				<b>E-Coil</b>	
				<b>EG</b>	DIN 43650 – IP65/IP67
				<b>EJ</b>	Amp Junior Timer – IP69K
				<b>EL</b>	Leadwires (2) – IP69K
				<b>ER</b>	Deutsch DT04-2P – IP69K
				<b>EY</b>	Metri-Pack® 150 – IP69K

**Porting**

- Cartridge Only **0**
- SAE 6 **6T**
- 1/4 in. BSP\* **2B**
- 3/8 in. BSP\* **3B**

\*BSP Body; U.K. Mfr. Only

**Seals**

- Buna N (Std.) **N**
- Fluorocarbon **V**
- Polyurethane **P**

Polyurethane seals are required for operation over 241 bar/3500 psi.

**Note:** This is an 08-size valve which fits an 08-size cavity, but uses a 10-size coil.

- 0** Less Coil\*\*
- 10** 10 VDC†
- 12** 12 VDC
- 24** 24 VDC
- 36** 36 VDC
- 48** 48 VDC
- 24** 24 VAC
- 115** 115 VAC
- 230** 230 VAC

\*\*Includes Std. Coil Nut

† DS, DG or DL terminations only.

**E-Coil**

- 10** 10 VDC
- 12** 12 VDC
- 20** 20 VDC
- 24** 24 VDC

Coils with internal diode are available. Consult factory.