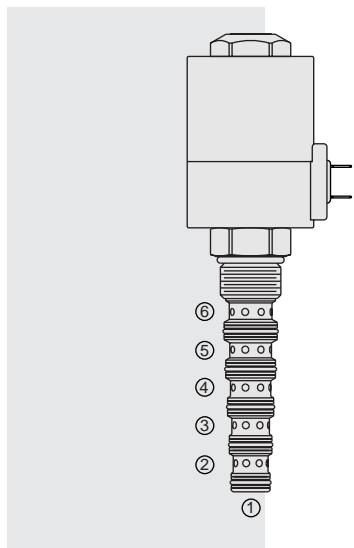


SV12-60 Spool, 2-Position, 6-Way



DESCRIPTION

A solenoid-operated, 2-position, 6-way, direct-acting spool-type, screw-in hydraulic cartridge valve. It is intended for use as a selector valve in selector or series/parallel drive circuits.

OPERATION

When de-energized, the **SV12-60** allows bi-directional flow between ⑤ and ⑥, and between ① and ②, while blocking flow at ③ and ④. When energized, the spool shifts to allow bidirectional flow between ④ and ⑤ and between ③ and ②, while blocking flow at ① and ⑥.

FEATURES

- Heavy-duty water resistant E-Coils rated up to IP69K.
- Hardened spool and cage for long life.
- Optional coil voltages and terminations.
- All ports may be fully pressurized.
- External metal-shell coil design.

RATINGS

Operating Pressure: 240 bar (3500 psi) max.

Flow: Up to 45.4 lpm (12 gpm); See Performance Chart

Leakage: 295 cc/minute (18 cu. in./minute) at 240 bar (3500 psi)

Temperature: -40 to 120°C with Buna N seals

Coil Duty Rating: See Chart

Response Time: Pull-In: 135 msec; Drop-Out: 30 msec

Initial Coil Current Draw at 20°C: 2.8 amps at 12 VDC

Filtration: See page 9.010.1

Fluids: Mineral-based or synthetics with lubricating properties at viscosities of 7.4 to 420 cSt (50 to 2000 sus); See Temperature and Oil Viscosity, page 9.060.1

Installation: No restrictions; See page 9.020.1

Cavity: VC12-6; See page 9.112.1

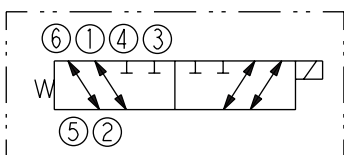
Cavity Tool: CT12-6XX; See page 8.600.1

Seal Kit: SK12-6X-MMMMM; See page 8.650.1

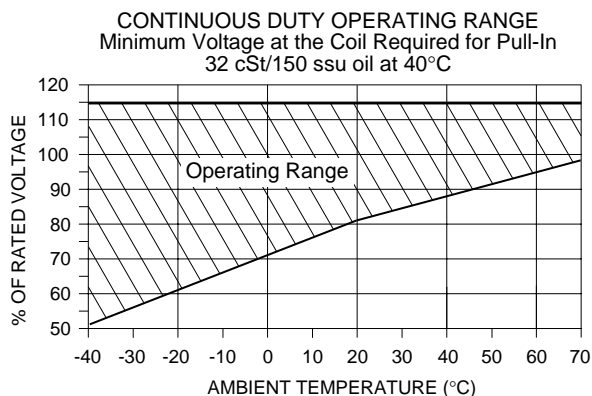
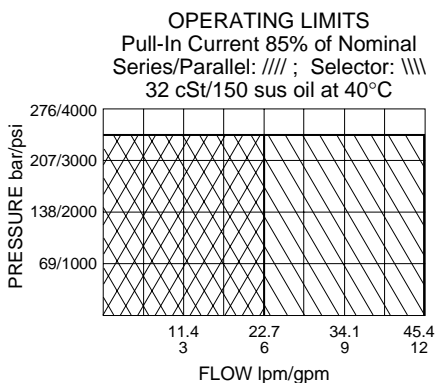
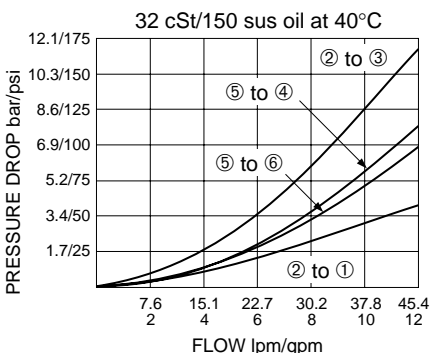
E-Coil Nut: Part No. 7085180

SYMBOLS

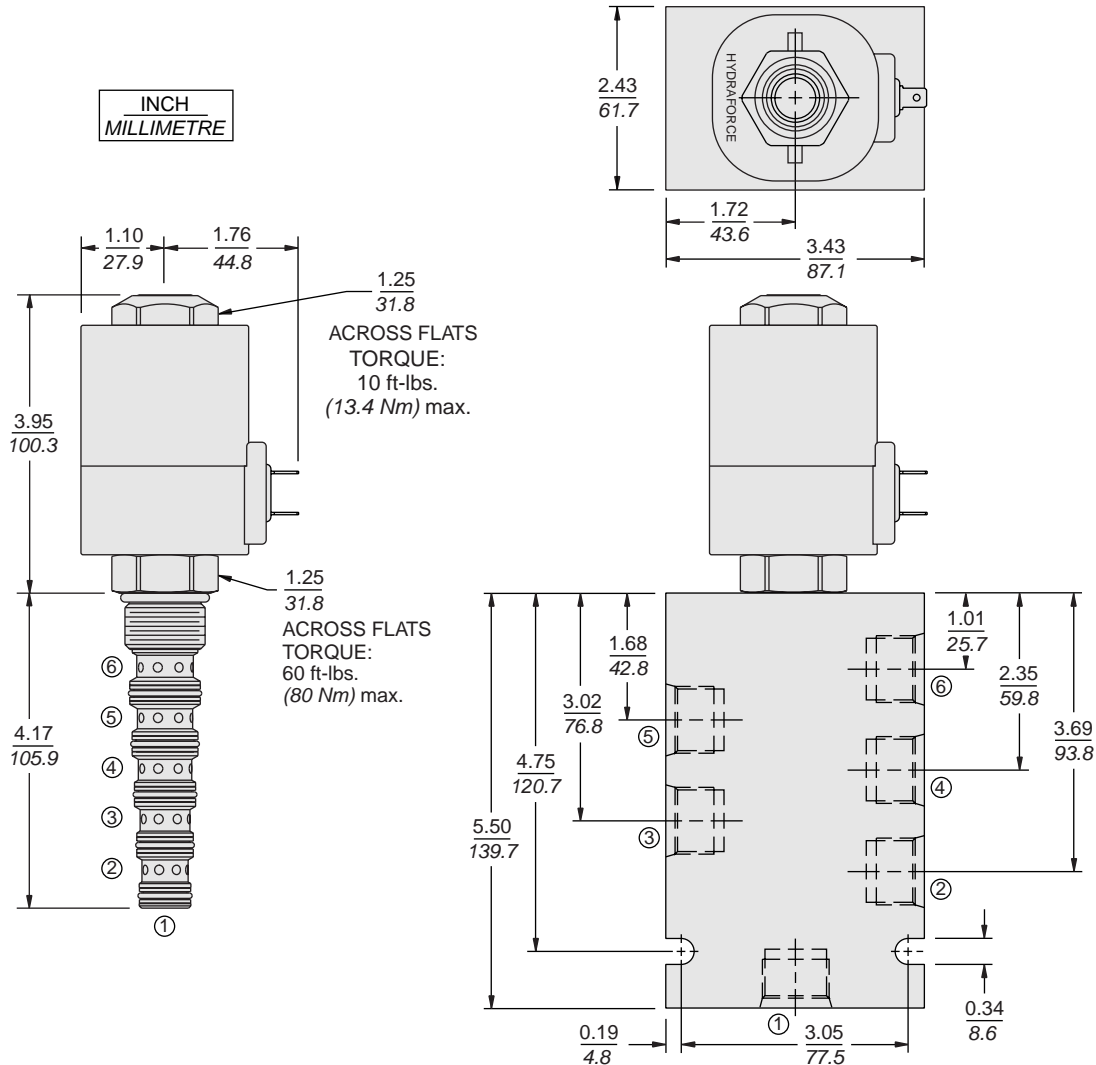
USAS/ISO:



PERFORMANCE (Cartridge Only)



DIMENSIONS



MATERIALS

Cartridge: Weight: 0.54 kg. (1.20 lbs.); Steel with hardened work surfaces. Zinc-plated exposed surfaces; Buna N O-rings and TFE back-ups standard.

Standard Ported Body: Anodized high-strength 6061 T6 aluminum alloy, rated to 207 bar (3000 psi); See page 8.012.1.

E-Coil: Weight: 1.36 kg. (3.0 lbs.); Fully encapsulated with rugged external metal shell; Rated up to IP69K with integral connectors; See Page 3.400.1.

TO ORDER

SV12-60

Porting					
Cartridge Only	0				
SAE 6	6T				
SAE 8	8T				
SAE 10	10T				
Seals					
Buna N (Std.)	N				
Fluorocarbon	V				
		Voltage			
		0	Less Coil		
		12	12 VDC		
		24	24 VDC		
		36	36 VDC		
		48	48 VDC		
				Terminations (VDC)	
				EL	Leadwires (2), IP65 Rated
				ES	Dual Spades, IP65 Rated
				EG	DIN 43650, IP65 Rated
				EW	Leads w/Weather-Pack® Connector, IP65 Rated
				EY	Metri-Pack® 150 Connector, IP69K Rated
					Coils with internal diode are available. Consult factory.
					Other coil voltages may be available for OEM applications. Consult factory.