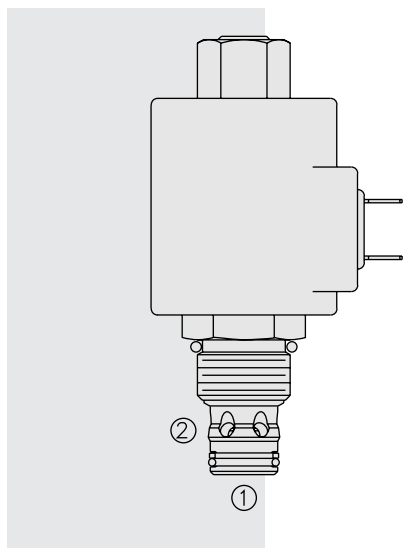


## SVRV10-26 Spool, 2-Way, Normally Open,



### DESCRIPTION

A solenoid-operated, two-way, spool-type, normally open, screw-in, hydraulic relief valve.

### OPERATION

When the coil is de-energized, the valve is open, allowing flow from ① to ②. When the coil is energized, flow from ① to ② is blocked. When the coil is energized and the pressure at ① exceeds the relief setting, the valve will open to allow flow from ① to ②.

### FEATURES

- Various pressure ranges.
- Continuous-duty rated solenoid.
- Hardened spool and cage for long life.
- Optional coil voltages and terminations.
- Efficient wet-armature construction.
- Cartridges are voltage interchangeable.
- Optional waterproof E-Coils rated up to IP69K.
- Unitized, molded coil design.
- Industry common cavity.

### RATINGS

**Operating Pressure:** 310 bar (4500 psi)

**Flow:** 0 to 75 lpm (0 to 20 gpm)

**Relief Pressure Settings** – defined as pressure evident at 7.57 lpm (2 gpm):

- A: 240 ±12 bar (3500 ±175 psi)
- B: 207 ±10.4 bar (3000 ±150 psi)
- C: 172 ±10.3 bar (2500 ±150 psi)
- D: 138 ±9.7 bar (2000 ±140 psi)
- E: 104 ±8.3 bar (1500 ±120 psi)

For custom OEM settings, consult factory.

**Reseat Pressure:** 80% of relief pressure setting

**Pilot Flow & Leakage** at 80% of relief pressure setting: 350 ml per minute max.

**Pressure Rise at Max. Current (Relief Mode):** 0.73 ±0.09 bar/lpm (40.0 ±5.0 psi/gpm)

**Temperature:** -40 to 120°C with standard Buna seals

**Coil Duty Rating:** Continuous from 85% to 115% of nominal voltage

**Initial Coil Current Draw at 20°C:** Standard Coil: 1.67 amps at 12 VDC; 0.18 amps at 115 VAC (full wave rectified).

E-Coil: 1.7 amps at 12 VDC; 0.85 amps at 24 VDC

**Minimum Pull-in Voltage:** 85% of nominal at 207 bar (3000 psi)

**Filtration:** See page 9.010.1

**Fluids:** Mineral-based or synthetics with lubricating properties at viscosities of 7.4 to 420 cSt (50 to 2000 sus); See Temperature and Oil Viscosity, page 9.060.1

**Installation:** No restrictions; See page 9.020.1

**Cavity:** VC10-2; See page 9.110.1

**Cavity Tool:** CT10-2XX; See page 8.600.1

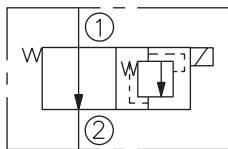
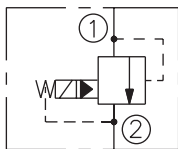
**Seal Kit:** SK10-2N-B; See page 8.650.1

**Coil Nut:** Part No. 7004420

### SYMBOLS

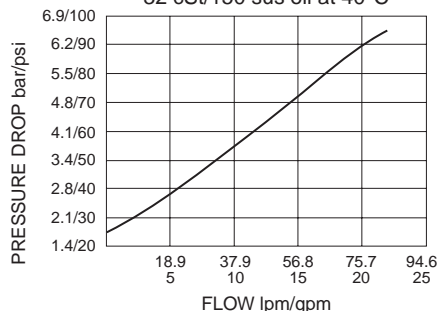
**USASI/ISO:**

**Expanded:**

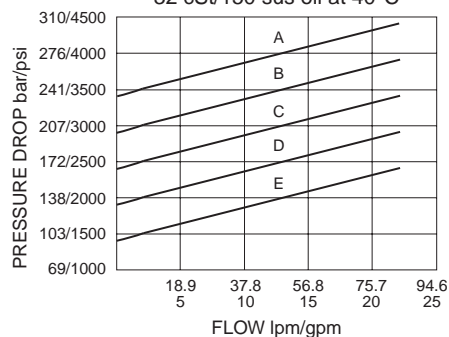


### PERFORMANCE (Cartridge Only)

No Current; Coil De-energized  
32 cSt/150 sus oil at 40°C



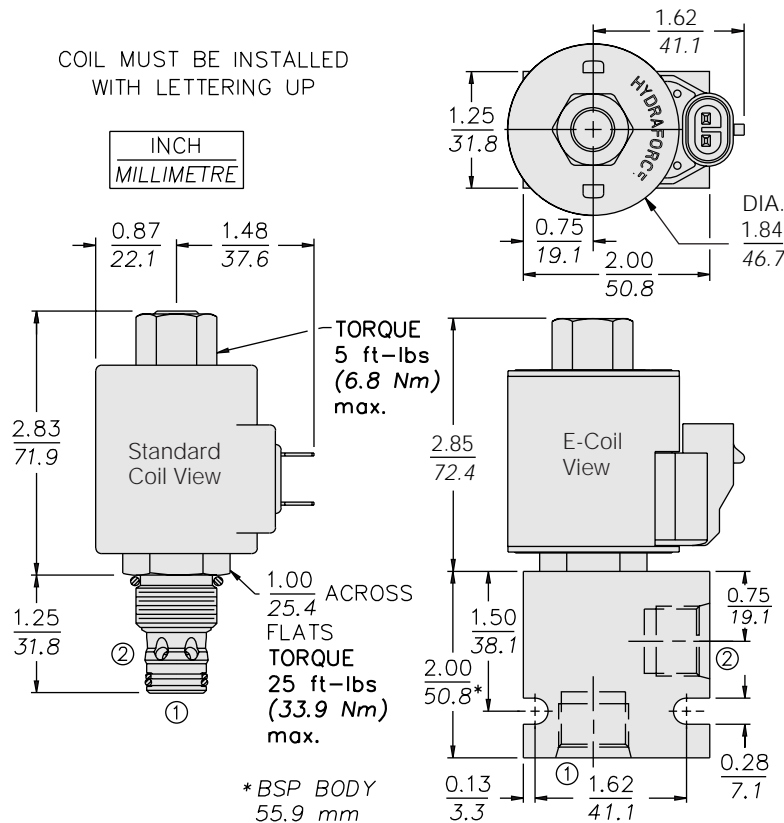
Coil Energized  
32 cSt/150 sus oil at 40°C



with Internal Relief

SVRV10-26

**DIMENSIONS**



**MATERIALS**

**Cartridge:** Weight: 0.19 kg. (0.41 lbs.) Steel with hardened work surfaces. Zinc-plated exposed surfaces. Buna N O-rings and polyester elastomer back-up standard.

**Standard Ported Body:** Weight: 0.16 kg. (0.35 lbs.) Anodized high-strength 6061 T6 aluminum alloy, rated to 207 bar (3000 psi); Ductile iron bodies available; dimensions may differ. See page 8.010.1.

**Standard Coil:** Weight: 0.27 kg. (0.60 lbs.); Unitized thermoplastic encapsulated, Class H high temperature magnetwire; See page 3.200.1.

**E-Coil:** Weight: 0.41 kg. (0.9 lbs.); Fully encapsulated with rugged external metal shell; Rated up to IP69K with integral connectors; See page 3.400.1.

**TO ORDER**

SVRV10-26

**Pressure Settings**

240 ±12.0 bar (3500 ±175 psi) **A**

207 ±10.4 bar (3000 ±150 psi) **B**

172 ±10.3 bar (2500 ±150 psi) **C**

138 ±9.7 bar (2000 ±140 psi) **D**

104 ±8.3 bar (1500 ±120 psi) **E**

For custom OEM settings, consult factory.

**Porting**

Cartridge Only **0**

SAE 6 **6T**

SAE 8 **8T**

1/4 in. BSP\* **2B**

3/8 in. BSP\* **3B**

1/2 in. BSP\* **4B**

\*BSP Body; U.K. Mfr. Only

**Voltage Std. Coil**

**0** Less Coil\*\*

**10** 10 VDC†

**12** 12 VDC

**24** 24 VDC

**36** 36 VDC

**48** 48 VDC

**24** 24 VAC

**115** 115 VAC

**230** 230 VAC

\*\*Includes Std. Coil Nut.

† DS, DW or DL terminations only

**E-Coil**

**10** 10 VDC

**12** 12 VDC

**20** 20 VDC

**24** 24 VDC

**Seals**

**N** Buna N (Std.)

**V** Fluorocarbon

**Termination (VDC) Std. Coil**

**DS** Dual Spades

**DG** DIN 43650

**DL** Leadwires (2)

**DL/W** Leads w/Weatherpak® Connectors

**DR** Deutsch DT04-2P

**Termination (VAC) Std. Coil**

**AG** DIN 43650

**AP** 1/2 in. Conduit

**Termination (VDC) E-Coil**

**ER** Deutsch DT04-2P (IP69K Rated)

**EY** Metri-Pack® 150 (IP69K Rated)

Coils with internal diode are available. Consult factory.