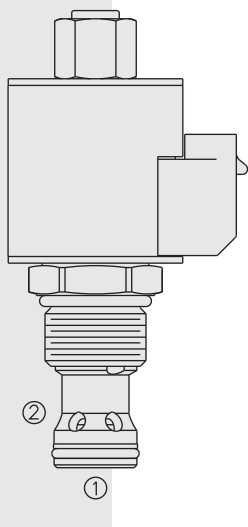


SVRV12-26F Spool, 2-Way, Normally Open,

U.S. Patent
7,137,406



DESCRIPTION

A solenoid-operated, two-way, spool-type, normally open, screw-in, hydraulic pressure-relief valve.

OPERATION

When the coil is de-energized, the **SVRV12-26F** is open, allowing flow from ① to ②. When the coil is energized, flow from ① to ② is blocked. When the coil is energized and the pressure at ① exceeds the relief setting, the valve will open to allow flow from ① to ②.

FEATURES

- Continuous-duty rated solenoid.
- Hardened spool and cage for long life.
- Efficient wet-armature construction.
- Cartridges are voltage interchangeable.
- Optional waterproof E-Coils rated up to IP69K.
- Unitized, molded coil design.
- Industry common cavity.

RATINGS

Operating Pressure: 297 bar (4300 psi)

Flow: 0 to 189 lpm (0 to 50 gpm)

Relief Pressure Range – setting defined as pressure evident at 7.57 lpm (2 gpm):
20.7 to 296.5 bar (300 to 4300 psi)

Reseat Pressure: 80% of relief pressure setting

Pilot Flow & Leakage at 80% of relief pressure setting: 350 ml per minute max.

Temperature: -40 to 100°C with standard Buna seals
-26 to 204°C with Fluorocarbon seals

Coil Duty Rating: Continuous from 85% to 115% of nominal voltage

Pull-In Amps: 1.14 amps maximum

Minimum Pull-in Voltage: 85% of nominal at 207 bar (3000 psi)

Drop-Out Amps: 0.08 amps minimum – defined as relief pressure returning to pressure drop across valve

Filtration: See page 9.010.1

Fluids: Mineral-based or synthetics with lubricating properties at viscosities of 7.4 to 420 cSt (50 to 2000 sus); See Temperature and Oil Viscosity, page 9.060.1

Installation: No restrictions; See page 9.020.1

Cavity: VC12-2; See page 9.112.1

Cavity Tool: CT12-2XX; See page 8.600.1

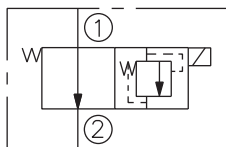
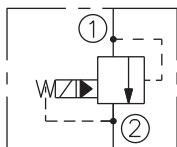
Seal Kit: SK12-2X-B; See page 8.650.1

Coil Nut: Part No. 7004420

SYMBOLS

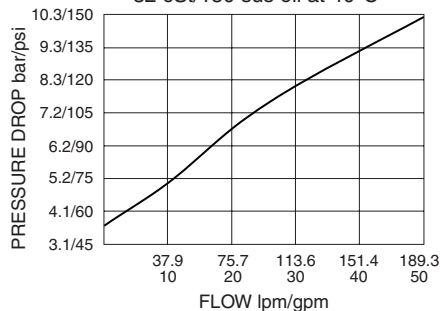
USASI/ISO:

Expanded:

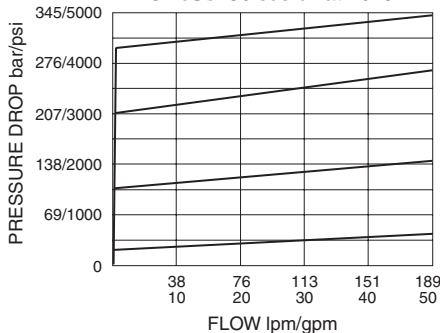


PERFORMANCE (Cartridge Only)

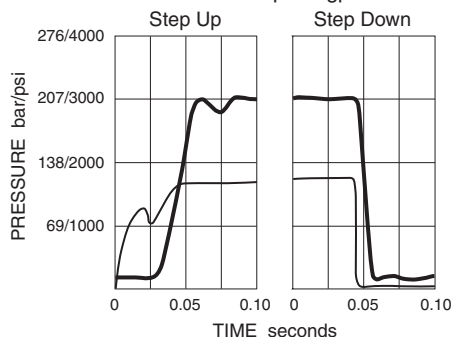
Pressure vs. Flow; Coil De-Energized
32 cSt/150 sus oil at 40°C



Pressure vs. Flow; Coil Energized
32 cSt/150 sus oil at 40°C



Response to Inlet Pressure
Supporting Valve Upstream
Flow 7.6 lpm/2 gpm

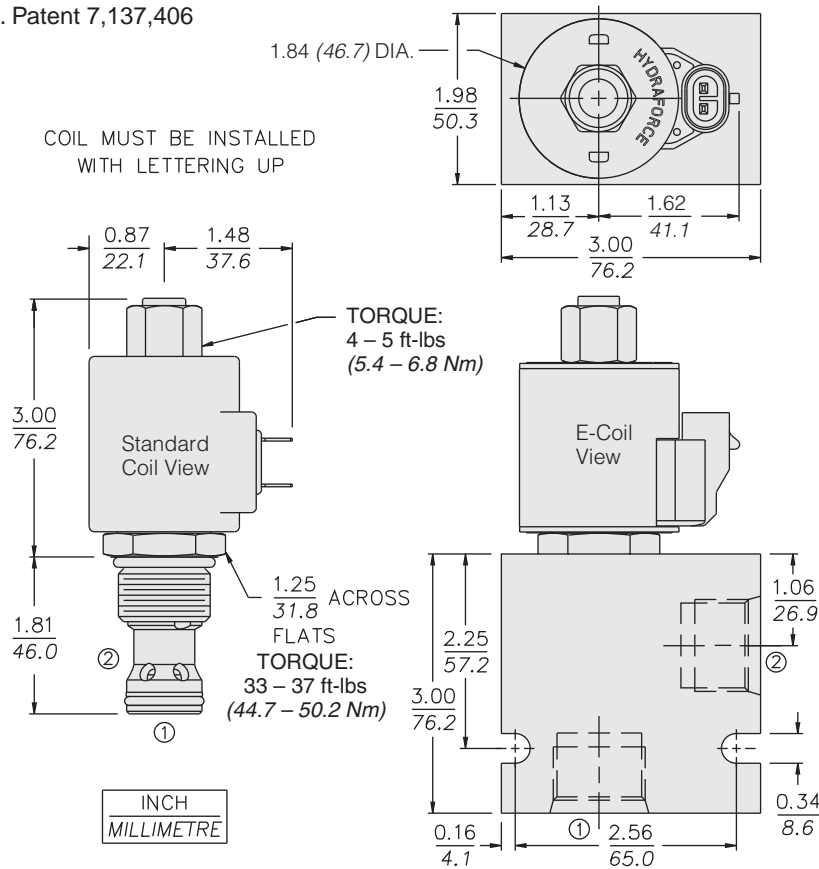


with Internal Relief

SVRV12-26F

DIMENSIONS

U.S. Patent 7,137,406



MATERIALS

Cartridge: Weight: 0.25 kg. (0.56 lbs.)
Steel with hardened work surfaces.
Zinc-plated exposed surfaces.
Buna N O-rings and polyester elastomer back-up standard.

Standard Ported Body: Weight: 0.57 kg. (1.25 lbs.) Anodized high-strength 6061 T6 aluminum alloy, rated to 207 bar (3000 psi). Ductile iron bodies available; dimensions may differ. See page 8.012.1

Standard Coil: Weight: 0.27 kg. (0.60 lbs.) Unitized thermoplastic encapsulated, Class H high temperature magnetwire. See page 3.200.1

E-Coil: Weight: 0.41 kg. (0.9 lbs.); Fully encapsulated with rugged external metal shell. Rated up to IP69K with integral connectors.

Note: See page 3.400.1 for all E-Coil retrofit applications.

TO ORDER

SVRV12-26F -

- Porting**
Cartridge Only 0
Alum. Body
SAE 10 10T
SAE 12 12T
SAE 16 16T
1/2 in. BSP* 4B
3/4 in. BSP* 6B
1 in. BSP* 8B
Duct. Iron Body
SAE 10 10TD
SAE 12 12TD
SAE 16 16TD
1/2 in. BSP* 4BD
3/4 in. BSP* 6BD
1 in. BSP* 8BD

*BSP Body; U.K. Mfr. Only

- Seals**
Buna N (Std.) N
Fluorocarbon V
Polyurethane P

Voltage Std. or E-Coil

- 0 Less Coil**
12 12 VDC
24 24 VDC
**Includes Std. Coil Nut.
For other voltages, see pages 3.200.1 & 3.400.1

Setting in bar

- 21 to 297 bar
Examples:
M75 75 bar
M190 190 bar
Setting in psi
300 to 4300 psi
Examples:
6.0 600 psi
30.0 3000 psi

Coil Termination

- Deutsch DT04-2P
Metri-Pak 150
Dual Lead Wires
Amp Jr. Timer
DIN 43650
Dual Spades

E-Coil

- ER (IP69K)
EY (IP69K)
EL (IP69K)
EJ (IP67)
EG (IP65)

D-Coil

- DR (IP65)
DY (IP65)
DL (IP65)
—
DG (IP65)
DS (IP65)

For Coil with Zener Diode, add "Z" to option code. For example: "ER/Z". Not available on all models. See coil option info. on pages 3.200.1 & 3.400.1