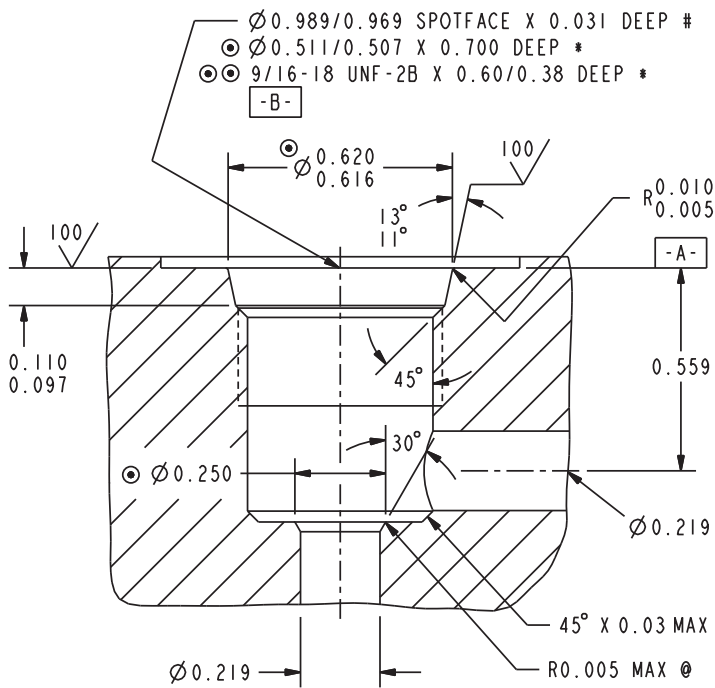


Series 06 Cartridge Cavities

VC06-1



VC06-1
NOTES:

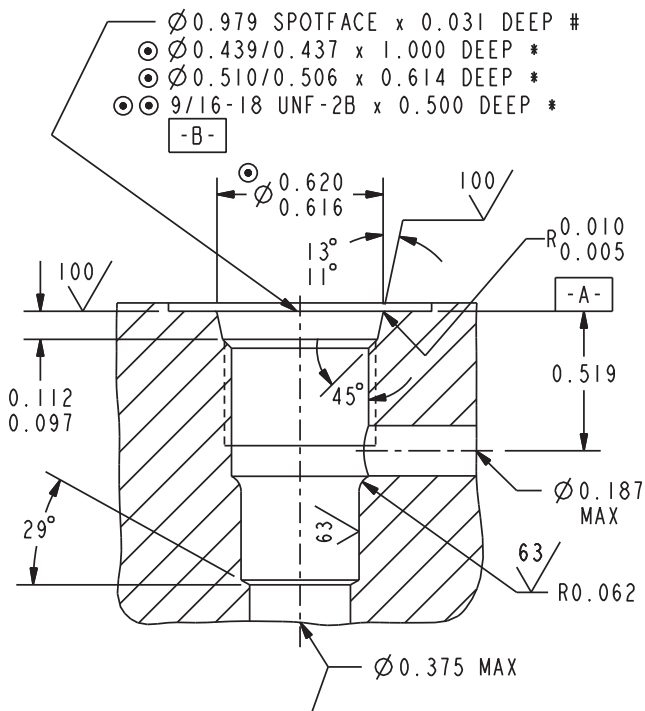
- \odot -

	0.001	A
\nearrow	0.002	B

 $\odot \odot$ -

	0.001	A
\bigcirc	0.0009	(PITCH DIA)
- * - DEPTHS ARE FROM DATUM [-A-].
 - # - UNLESS OTHERWISE SPECIFIED ON MACHINING DRAWING.
 - UNSPECIFIED TOLERANCES ARE ± 0.005 .
 - UNSPECIFIED ANGULAR DIMENSIONS $\pm 3^\circ$.
 - \odot - THIS SURFACE IS A VALVE SEAT. IT MUST BE FREE OF NICKS AND TOOL MARKS.

VC06-2



VC06-2
NOTES:

- \odot -

	0.001	A
\nearrow	0.002	B

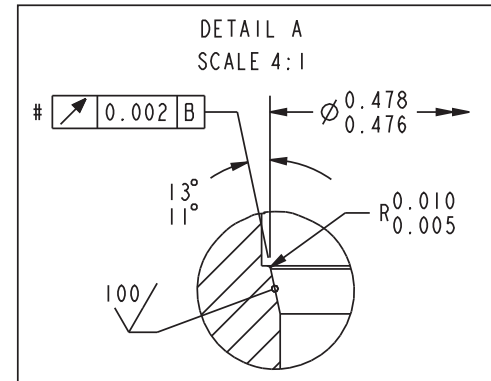
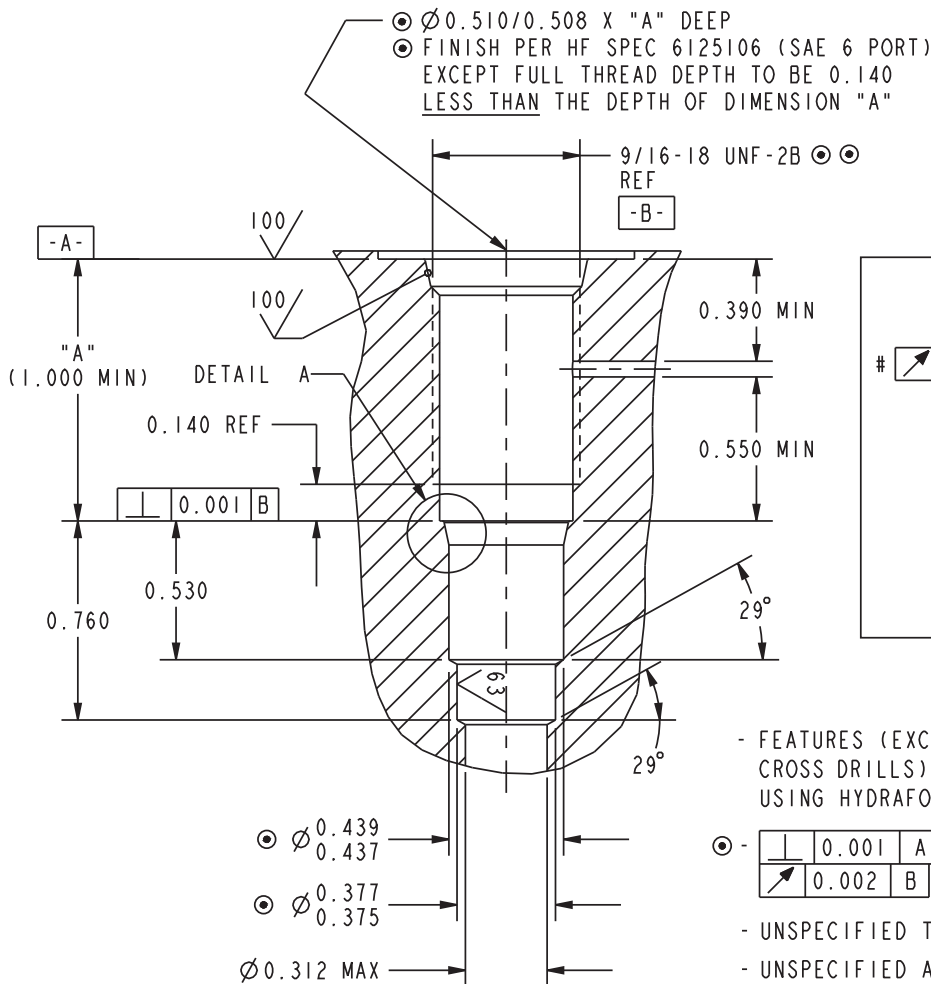
 $\odot \odot$ -

	0.001	A
\bigcirc	0.0009	(PITCH DIA)
- FEATURES (EXCEPT FOR PILOT DRILL AND CROSS DRILLS) CAN BE MACHINED SIMULTANEOUSLY USING HYDRAFORCE FORM TOOLS. CONSULT FACTORY.
 - * - DEPTHS ARE FROM DATUM [-A-].
 - # - UNLESS OTHERWISE SPECIFIED ON MACHINING DRAWING.
 - UNSPECIFIED TOLERANCES ARE ± 0.005 .
 - UNSPECIFIED ANGULAR DIMENSIONS $\pm 3^\circ$.
 - ** - FEATURES OF VARIATION 'A' ARE ONLY REQUIRED IF NOTED ON A SPECIFIC PRODUCT CATALOG PAGE.

NOTE: CAVITY VARIATION 'A' **
MINIMUM PILOT DRILL $\varnothing 0.375$ TO
MINIMUM DEPTH OF 1.10 FROM DATUM [-A-]

Series 06 Cartridge Cavities

VC06-B2



NOTES:

- FEATURES (EXCEPT FOR PILOT DRILL AND CROSS DRILLS) CAN BE MACHINED SIMULTANEOUSLY USING HYDRAFORCE FORM TOOLS. CONSULT FACTORY.
- UNSPECIFIED TOLERANCES ARE ± 0.005 .
- UNSPECIFIED ANGULAR DIMENSIONS $\pm 3^\circ$.
- # - THIS SURFACE IS A VALVE SEAT. IT MUST BE FREE OF NICKS AND TOOL MARKS.