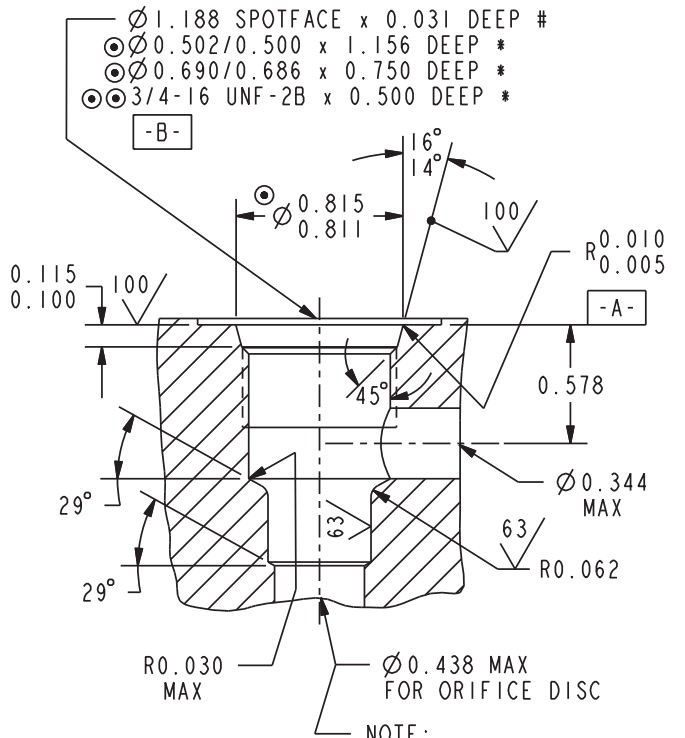


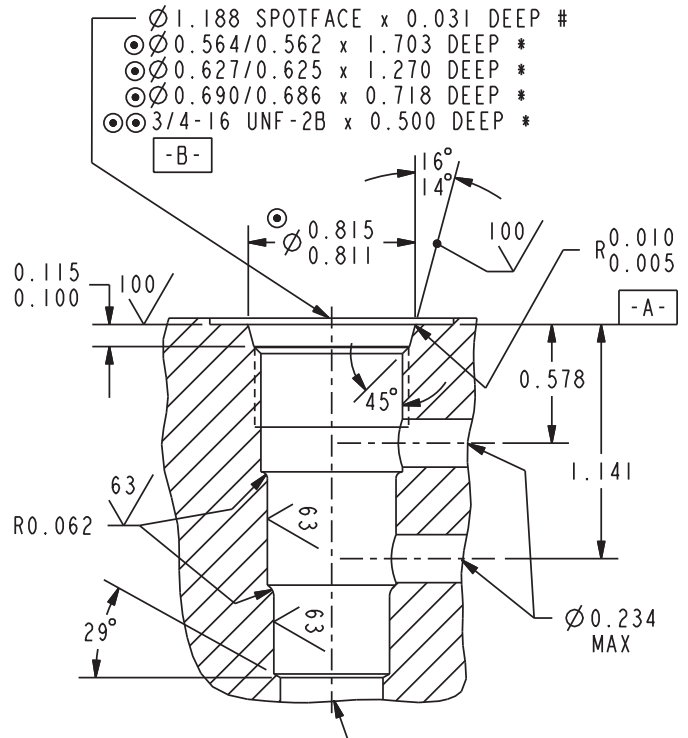
Series 08 Cartridge Cavities

VC08-2



NOTE:  
 CAVITY VARIATION 'A'\*\*\*  
 PILOT DRILL  $\varnothing 0.469$  MIN.  
 REQUIRED TO MIN. DEPTH  
 OF 1.32 FROM SPOTFACE

VC08-3



NOTE:  
 CAVITY VARIATION 'A'\*\*\*  
 PILOT DRILL  $\varnothing 0.500$  MIN.  
 REQUIRED TO MIN. DEPTH  
 OF 1.81 FROM SPOTFACE

NOTES:

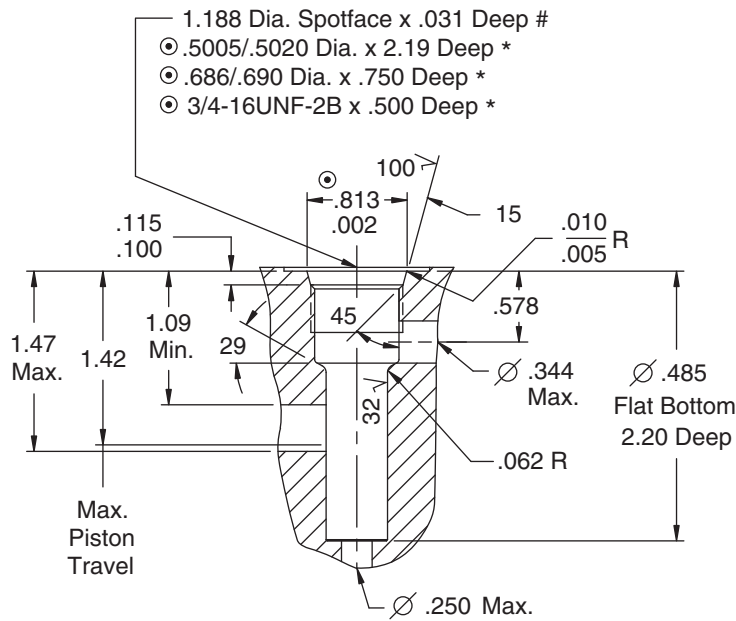
- THE ABOVE FEATURES (EXCEPT FOR PILOT DRILL AND CROSS DRILLS) CAN BE MACHINED SIMULTANEOUSLY USING HYDRAFORCE FORM TOOLS. CONSULT FACTORY.



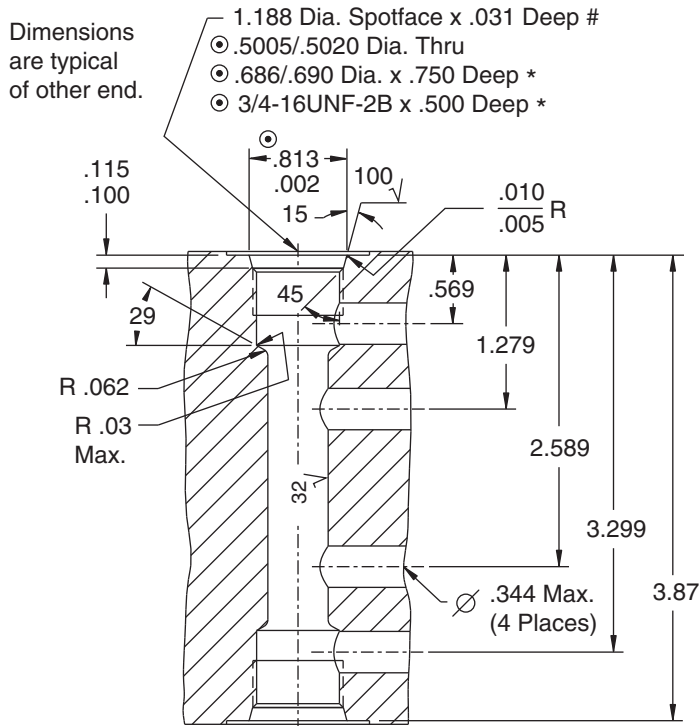
- \* - DEPTHS ARE FROM DATUM [-A-].
- # - UNLESS OTHERWISE SPECIFIED ON MACHINING DRAWING.
- UNSPECIFIED TOLERANCES ARE  $\pm 0.005$ .
- UNSPECIFIED ANGULAR DIMENSIONS  $\pm 3^\circ$ .
- \*\*\* - FEATURES OF VARIATION 'A' ARE ONLY REQUIRED IF NOTED ON A SPECIFIC PRODUCT CATALOG PAGE.

## Series 08 Cartridge Cavities

### VC08-PCV



### VC08-DCV



**Notes:**

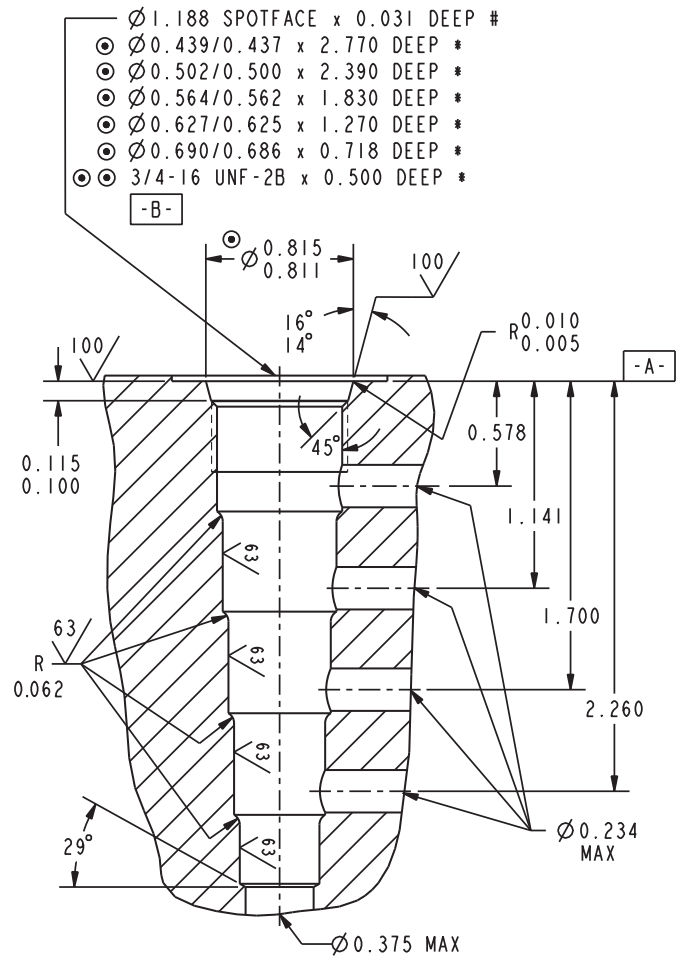
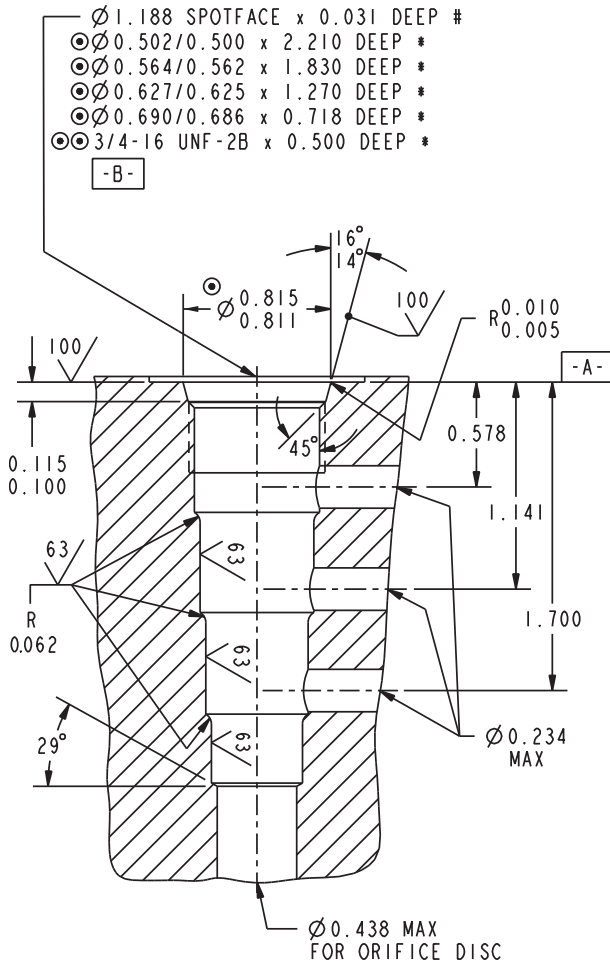
- ◎ 1. These Diameters to be Concentric within .002 T.I.R. and Perpendicular to Spotface within .001 T.I.R.
- \* 2. Depths are from Spotface.
- 3. Unspecified Tolerances are .005.
- # 4. Unless Otherwise Specified on Machining Drawing
- 5. All Dimensions shown in inches unless otherwise noted.

Cavity features (except for pilot drill and cross drills) can be machined simultaneously using HydraForce form tools. Consult factory.

Series 08 Cartridge Cavities

VC08-4

VC08-5



NOTES:

- THE ABOVE FEATURES (EXCEPT FOR PILOT DRILL AND CROSS DRILLS) CAN BE MACHINED SIMULTANEOUSLY USING HYDRAFORCE FORM TOOLS. CONSULT FACTORY.

$\varnothing$ - <table border="1"> <tr><td><math>\perp</math></td><td>0.001</td><td>A</td></tr> <tr><td><math>\nearrow</math></td><td>0.002</td><td>B</td></tr> </table>	$\perp$	0.001	A	$\nearrow$	0.002	B	$\varnothing \varnothing$ - <table border="1"> <tr><td><math>\perp</math></td><td>0.001</td><td>A</td></tr> <tr><td><math>\bigcirc</math></td><td>0.0009</td><td>(PITCH DIA)</td></tr> </table>	$\perp$	0.001	A	$\bigcirc$	0.0009	(PITCH DIA)
	$\perp$	0.001	A										
$\nearrow$	0.002	B											
$\perp$	0.001	A											
$\bigcirc$	0.0009	(PITCH DIA)											

- \* - DEPTHS ARE FROM DATUM -A- .
- # - UNLESS OTHERWISE SPECIFIED ON MACHINING DRAWING.
- UNSPECIFIED TOLERANCES ARE  $\pm 0.005$ .
- UNSPECIFIED ANGULAR DIMENSIONS  $\pm 3^\circ$ .