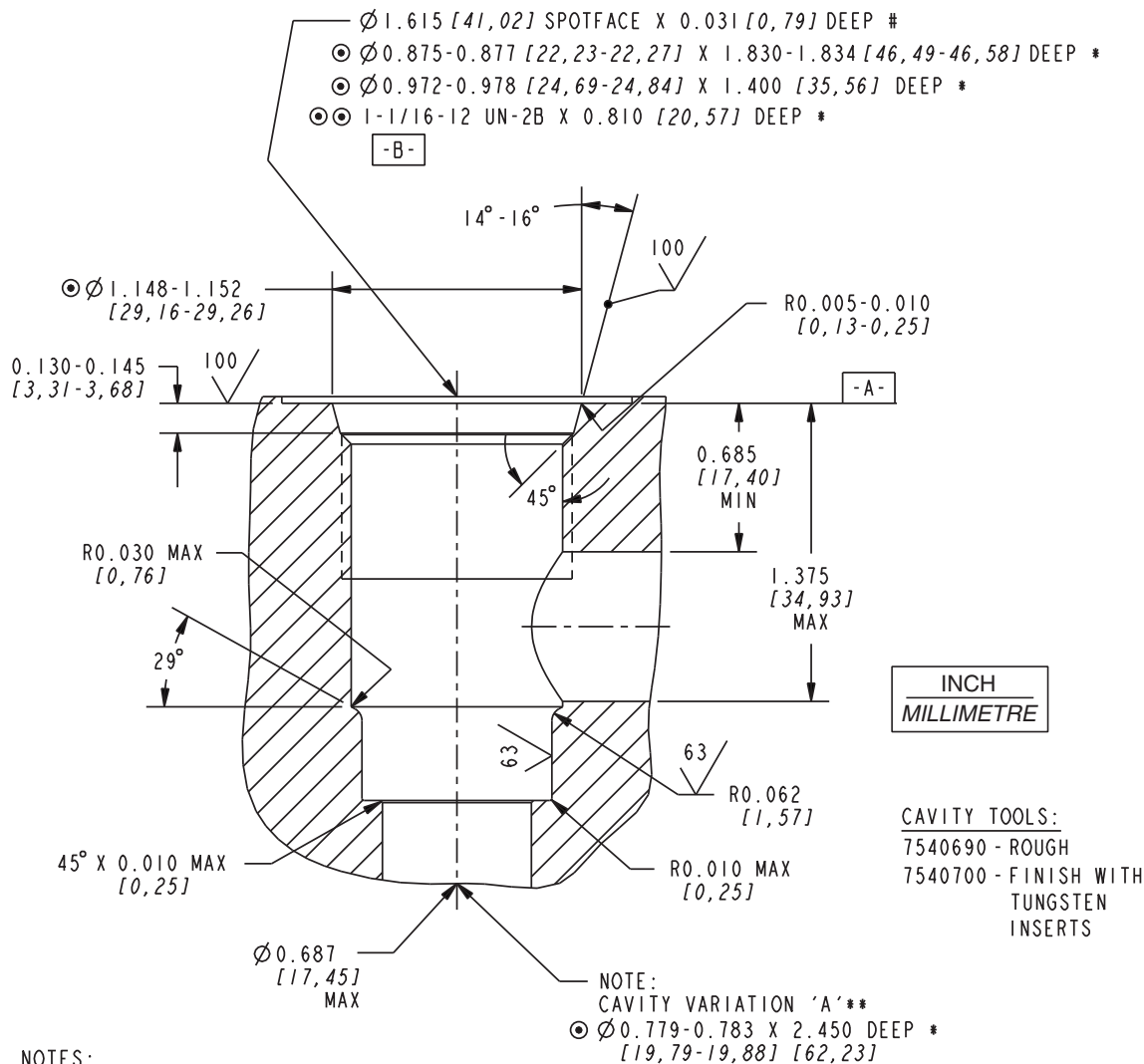


*Series 12 Cartridge Cavities*

**HVC12-2**



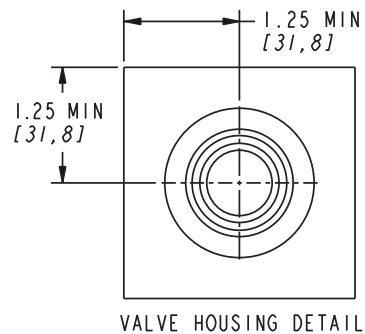
**NOTES:**

- $\odot$  - 

	0.001 [0,025]	A
↗	0.002 [0,05]	B
- $\odot \odot$  - 

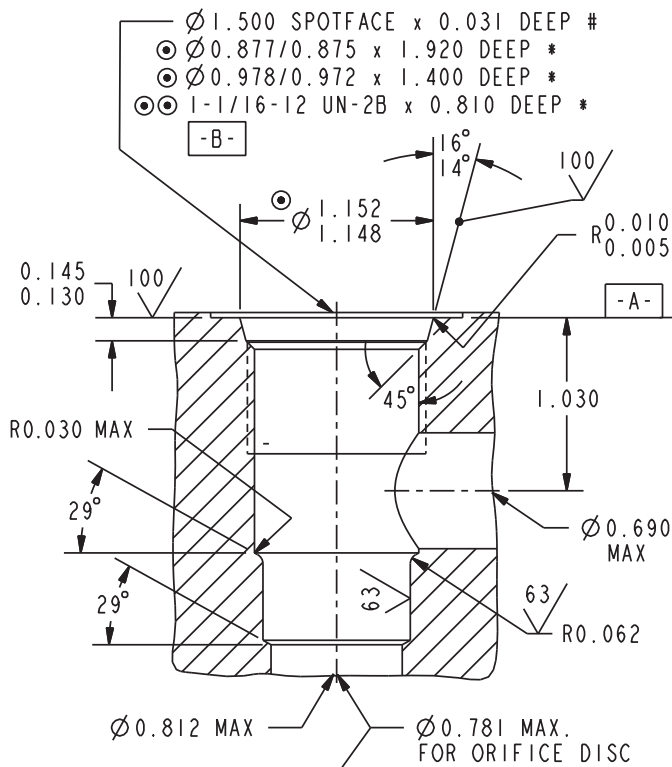
	0.001 [0,025]	A
○	0.0009 [0,023]	(PITCH DIA)

- \* - DEPTHS ARE FROM DATUM -A-.
- # - UNLESS OTHERWISE SPECIFIED ON MACHINING DRAWING.
- UNSPECIFIED TOLERANCES ARE  $\pm 0.005 [0,13]$ .
- UNSPECIFIED ANGULAR DIMENSIONS  $\pm 3^\circ$ .
- SURFACE FINISH SPECIFICATIONS ARE IN MICROINCHES [MICROMETERS].



# Series 12 Cartridge Cavities

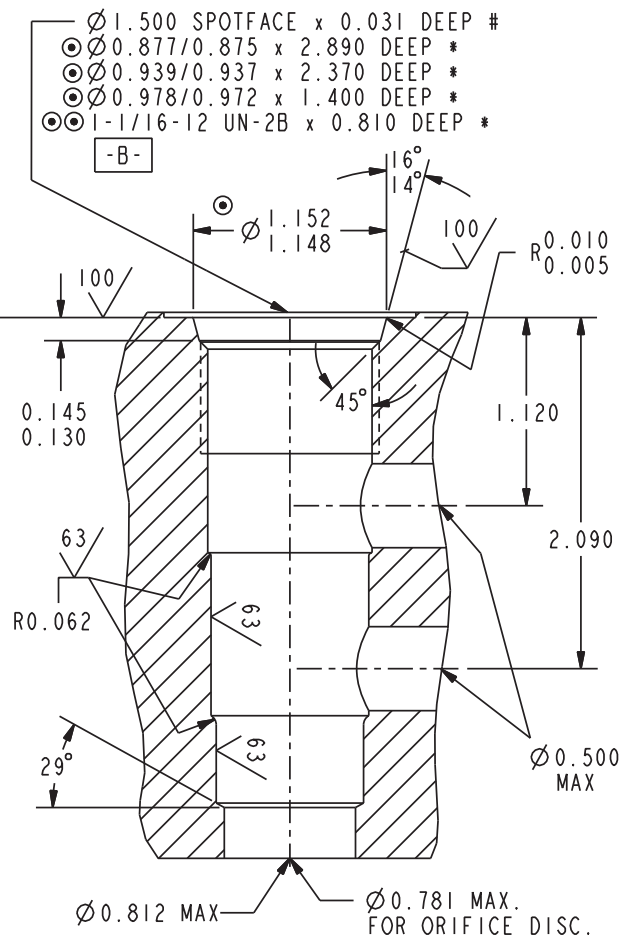
## VC12-2



NOTE:  
 CAVITY VARIATION 'A'\*\*\*  
 MIN. PILOT DRILL  $\varnothing$  0.750  
 REQUIRED TO MIN. DEPTH  
 OF 2.14 FROM SPOTFACE

NOTE:  
 CAVITY VARIATION 'B'\*\*\*  
 PILOT DRILL  $\varnothing$  0.812  
 REQUIRED TO MIN. DEPTH  
 OF 2.45 FROM SPOTFACE

## VC12-3



### NOTES:

- THE ABOVE FEATURES (EXCEPT FOR PILOT DRILL AND CROSS DRILLS) CAN BE MACHINED SIMULTANEOUSLY USING HYDRAFORCE FORM TOOLS. CONSULT FACTORY.

$\odot$ -	0.001	A	$\odot\odot$ -	0.001	A
	0.002	B		0.0009	(PITCH DIA)

\* - DEPTHS ARE FROM DATUM -A- .

# - UNLESS OTHERWISE SPECIFIED ON MACHINING DRAWING.

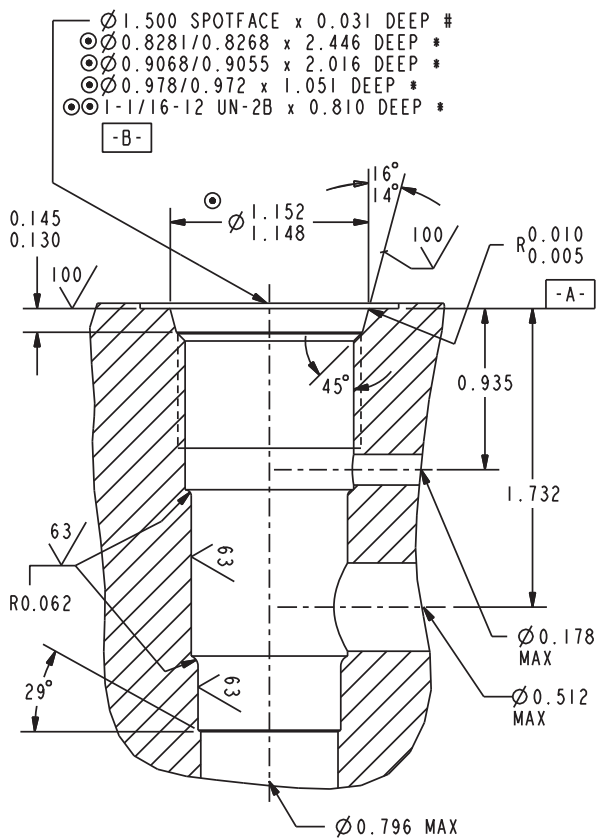
- UNSPECIFIED TOLERANCES ARE  $\pm$ 0.005.

- UNSPECIFIED ANGULAR DIMENSIONS  $\pm$ 3°.

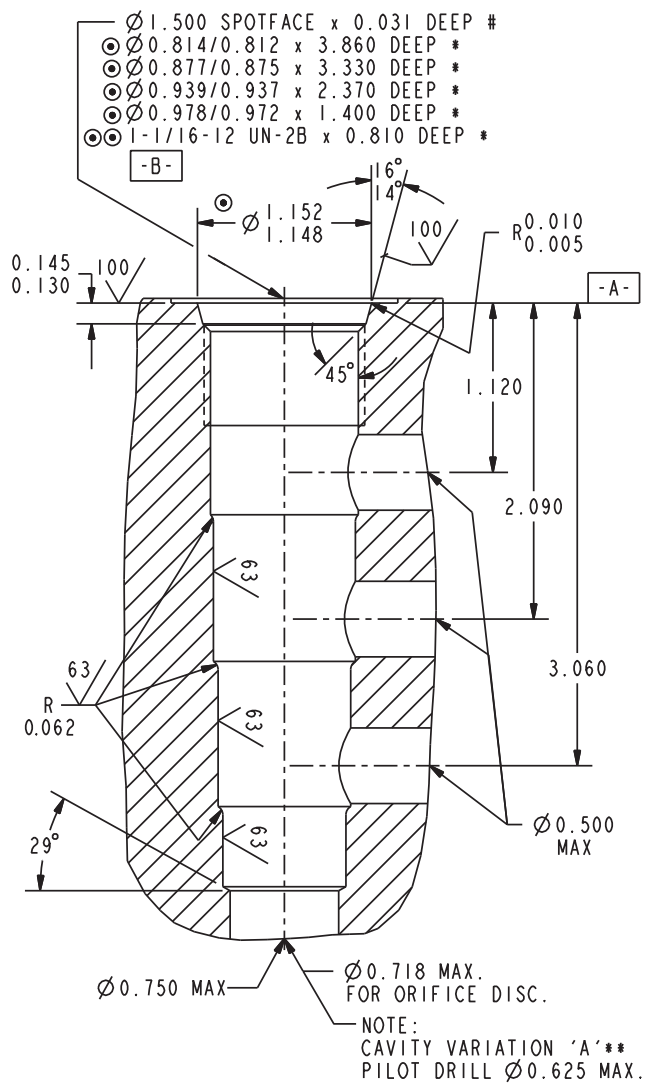
\*\* - FEATURES OF VARIATION 'A' AND 'B' ARE ONLY REQUIRED IF NOTED ON A SPECIFIC PRODUCT CATALOG PAGE.

## Series 12 Cartridge Cavities

### VC12-S3



### VC12-4



NOTES: - THE ABOVE FEATURES (EXCEPT FOR PILOT DRILL AND CROSS DRILLS) CAN BE MACHINED SIMULTANEOUSLY USING HYDRAFORCE FORM TOOLS. CONSULT FACTORY.

$\odot$	$\frac{\text{A}}{\text{B}}$	0.001	A	$\odot \odot$	$\frac{\text{A}}{\text{B}}$	0.001	A
	$\frac{\text{A}}{\text{B}}$	0.002	B		$\frac{\text{A}}{\text{B}}$	0.0009	(PITCH DIA)

\* - DEPTHS ARE FROM DATUM -A- .

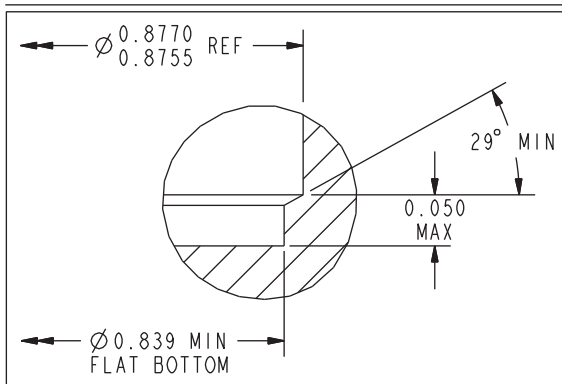
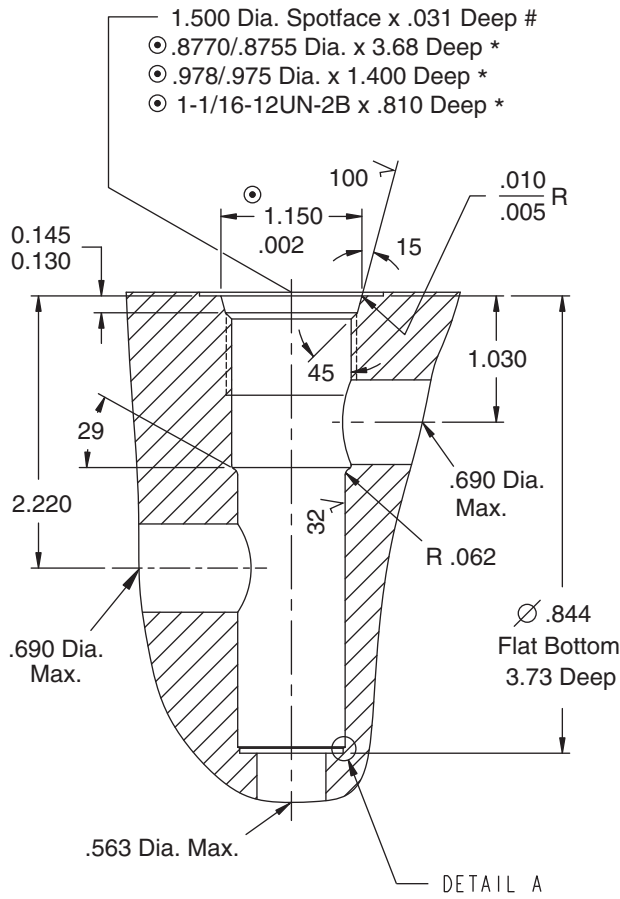
# - UNLESS OTHERWISE SPECIFIED ON MACHINING DRAWING.

- UNSPECIFIED TOLERANCES ARE  $\pm 0.005$ . - UNSPECIFIED ANGULAR DIMENSIONS  $\pm 3^\circ$ .

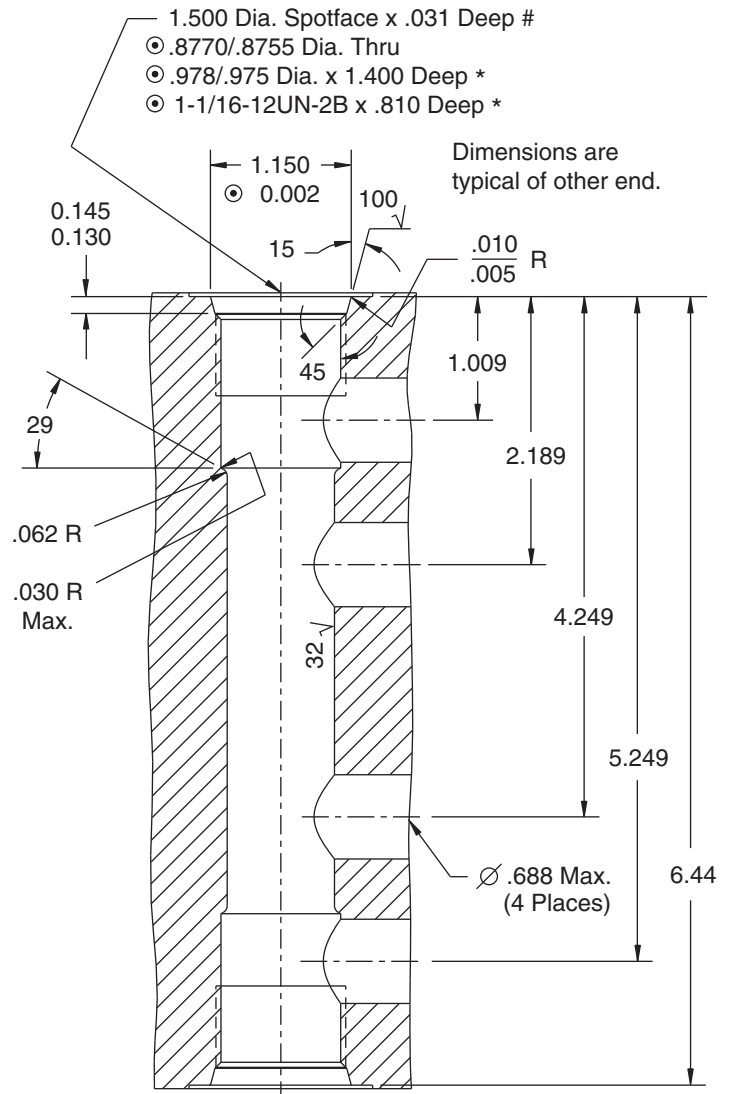
\*\* - FEATURES OF VARIATION 'A' ARE ONLY REQUIRED IF NOTED ON A SPECIFIC PRODUCT CATALOG PAGE.

# Series 12 Cartridge Cavities

## VC12-PCV



## VC12-DCV



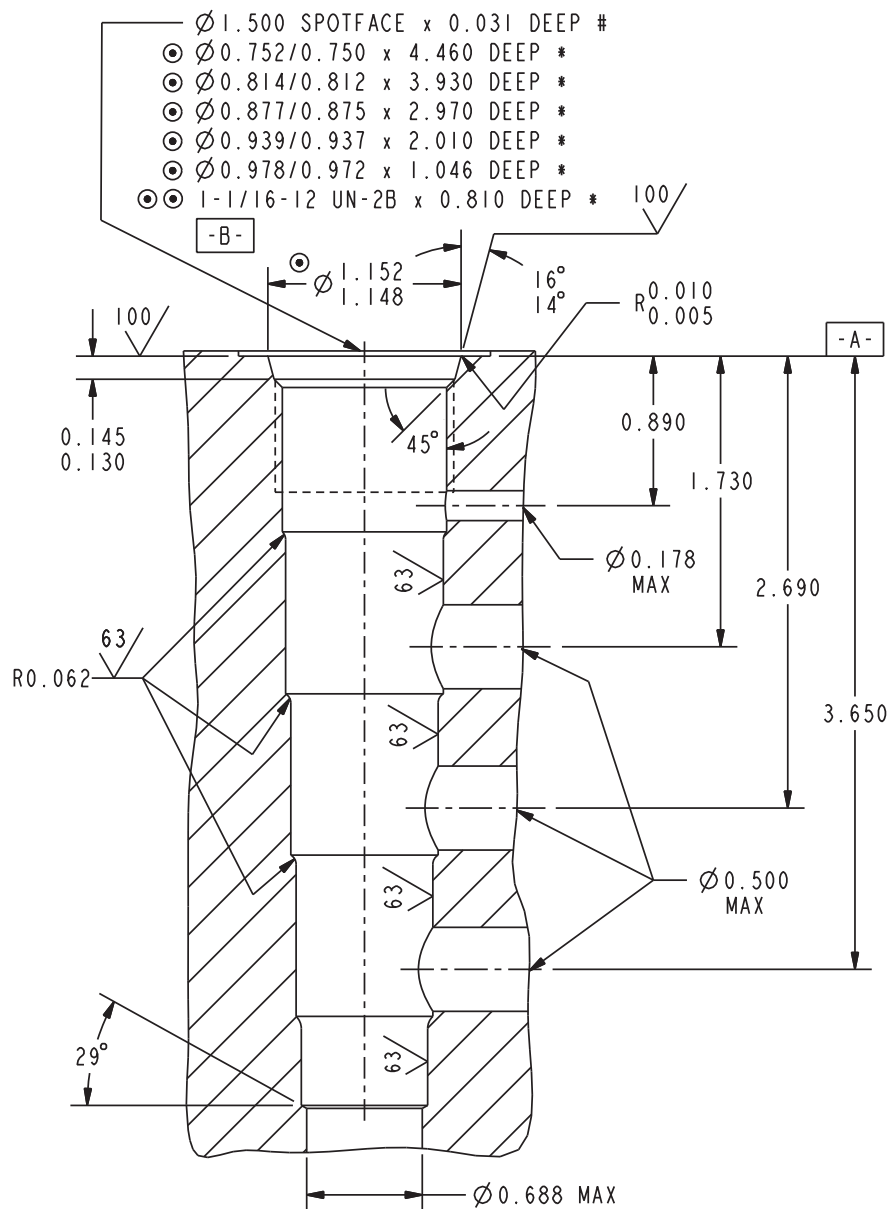
**Notes:**

- ◎ 1. These Diameters to be Concentric within .002 T.I.R. and Perpendicular to Spotface within .001 T.I.R.
- \* 2. Depths are from Spotface.
- 3. Unspecified Tolerances are .005.
- # 4. Unless Otherwise Specified on Machining Drawing
- 5. All Dimensions shown in inches unless otherwise noted.

Cavity features (except for pilot drill and cross drills) can be machined simultaneously using HydraForce form tools. Consult factory.

Series 12 Cartridge Cavities

VC12-S5



NOTES: - THE ABOVE FEATURES (EXCEPT FOR PILOT DRILL AND CROSS DRILLS) CAN BE MACHINED SIMULTANEOUSLY USING HYDRAFORCE FORM TOOLS. CONSULT FACTORY.

◎		0.001	A	◎◎		0.001	A
		↗	0.002			B	○

- \* - DEPTHS ARE FROM DATUM -A- .
- # - UNLESS OTHERWISE SPECIFIED ON MACHINING DRAWING.
- UNSPECIFIED TOLERANCES ARE  $\pm 0.005$ . - UNSPECIFIED ANGULAR DIMENSIONS  $\pm 3^\circ$ .



