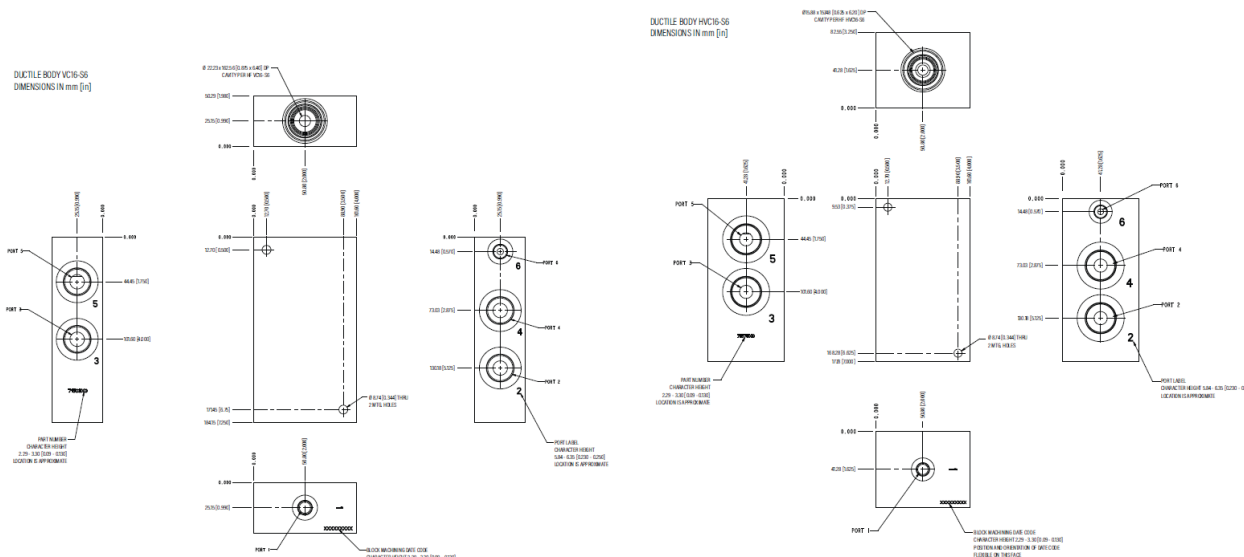




Ratings

Pressure rating 345 bar (5000 psi) ductile iron - Note: Dura-bar

Dimensions



Part Numbers

CAVITY: HVC16-S6

P/N: 7157560	Code: 16HT	Material: DUCTILE IRON			
Port 1	Port 2	Port 3	Port 4	Port 5	Port 6
SAE 6	SAE 16	SAE 16	SAE 16	SAE16	SAE 6

CAVITY: VC16-S6

P/N: 7150360	Code: 16TD	Material: DUCTILE IRON			
Port 1	Port 2	Port 3	Port 4	Port 5	Port 6
SAE 6	SAE 16	SAE 16	SAE 16	SAE16	SAE 6

NOTE: PD STYLE BODY, SAE 6 PORTS 1 AND 6